



# Trusted Video Management

**SCB-A10**

User Manual

如何搜尋到 SCB-A10

Searching LAN for SCB-A10

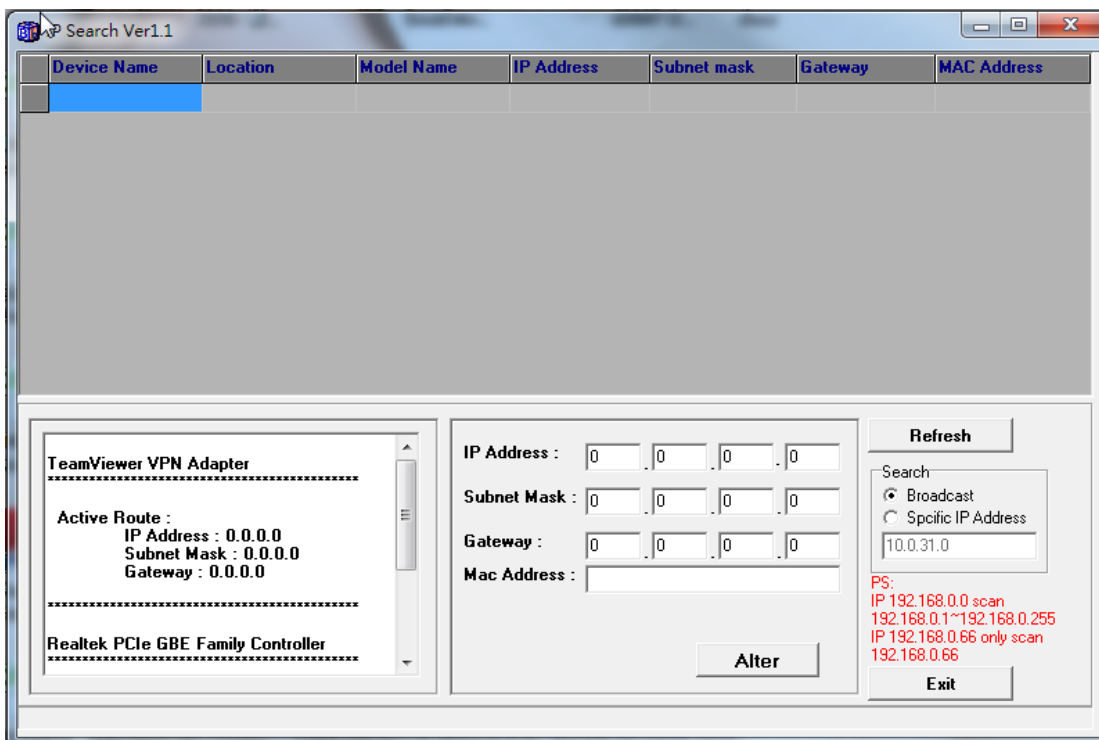
- 1 安裝完 SCB-A10，並確認網路線已經安裝完成後，利用 SCB-A10 搜索 IP 位址的工具：[IP Search](#) 來尋找所屬網域所有的 SCB-A10，桌面圖示如下：

After installing SCB-A10 and confirming that the network cable has been installed, use the IP Search tool to find all SCB-A10 in the domain it belongs to.



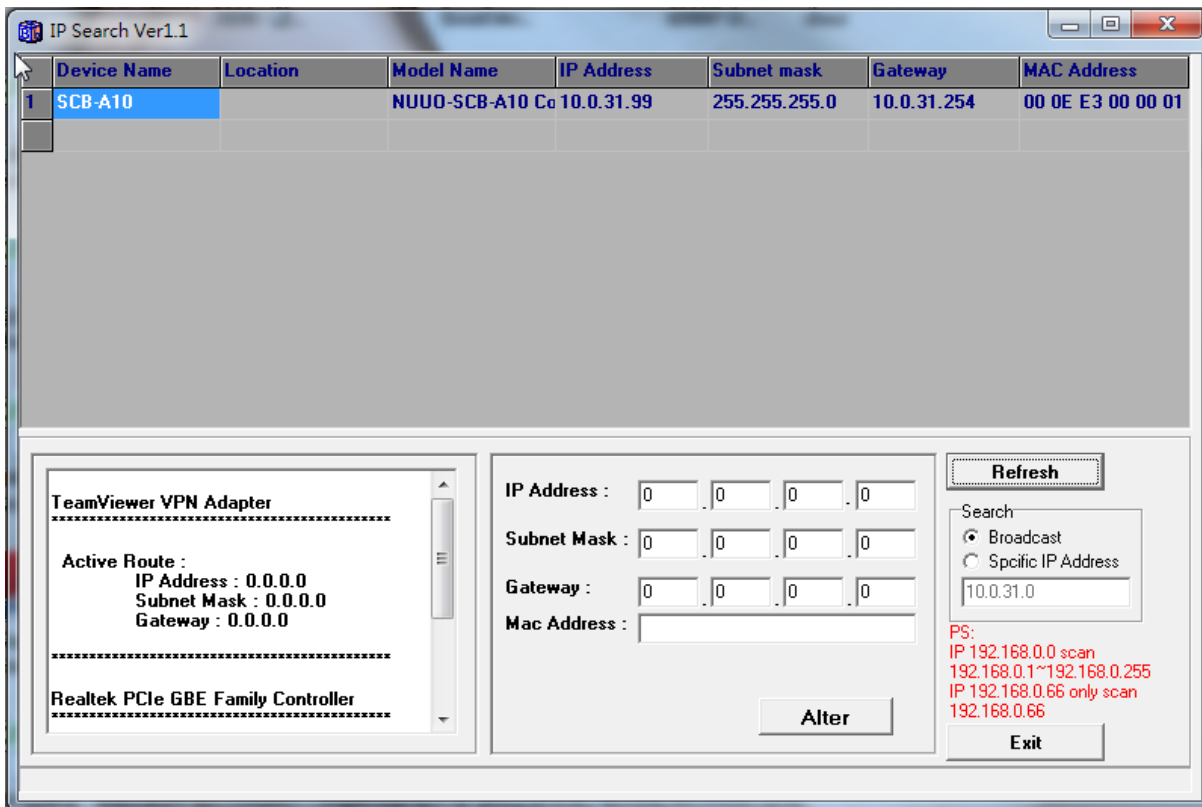
- 2 點擊桌面的 IP Search 圖示後，會出現一個視窗，如下圖：

Clicking the IP Search icon and will appear, as shown below:



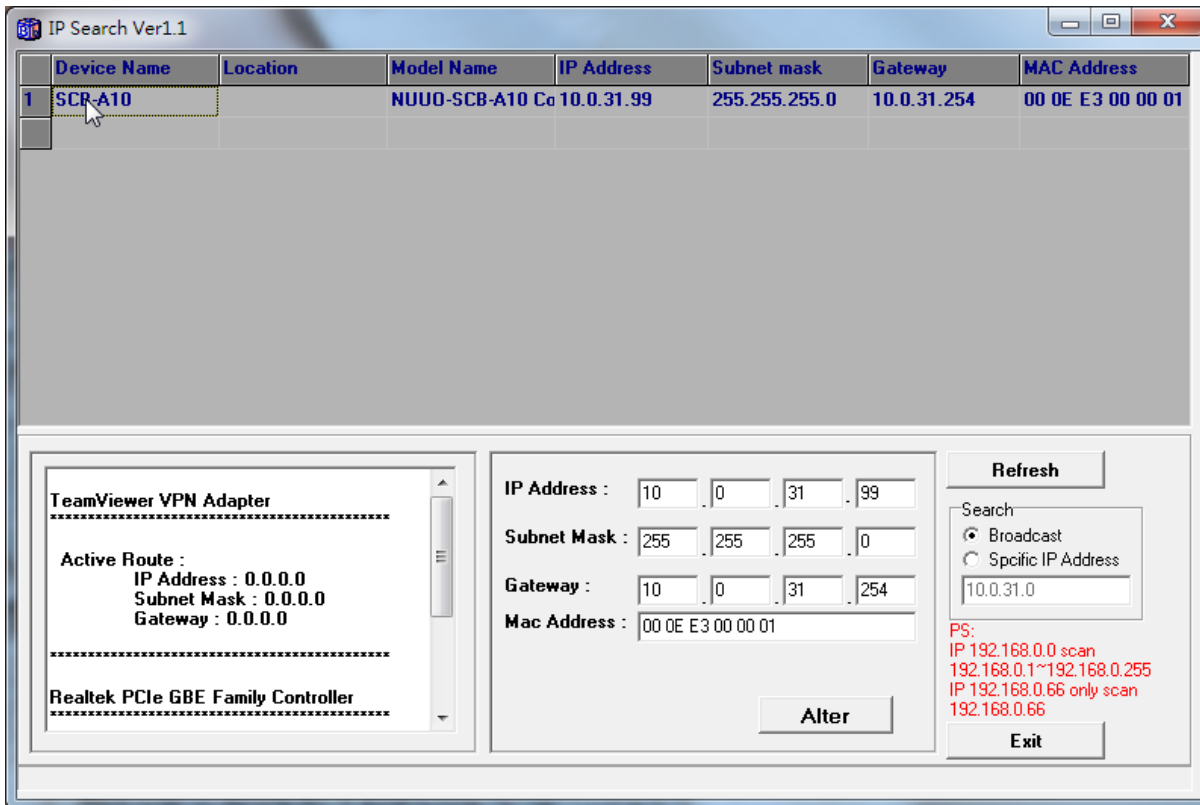
3 點擊 Refresh 查詢同網域內的 SCB-A10 的 IP 位置。

Click Refresh to query the IP location of SCB-A10 in the same domain.



- 4 IP Search 視窗出現後，會顯示目前在所屬網域內的所有 SCB-A10，視窗內會顯示 SCB-A10 的 **Device Name**、**Location**、**Model Name**、**IP Address**、**Subnet Mark**、**Gateway**、**Mac Address**，點選視窗內所顯示的 SCB-A10，視窗下方將會顯示所點選 SCB-A10 的相關資訊，如下圖：

All SCB-A10 in the current domain will be displayed. The device name, Location, Model Name, IP Address, Subnet Mark, Gateway, Mac Address of SCB-A10 will be displayed in the window. Click SCB-A10 displayed in the window, the relevant information of the selected SCB-A10 will be displayed at the bottom of the window, as shown below:



- 5 雙擊後跳到 SCB-A10 Quick Setup 畫面，TID 欄位必須確認與 PORT 2(Master/Slave)的 Terminal ID 一樣。

Double-click SCB-A10 to jump to the web Quick Setup screen. Make sure the TID must be the same as the Terminal ID of PORT 2.

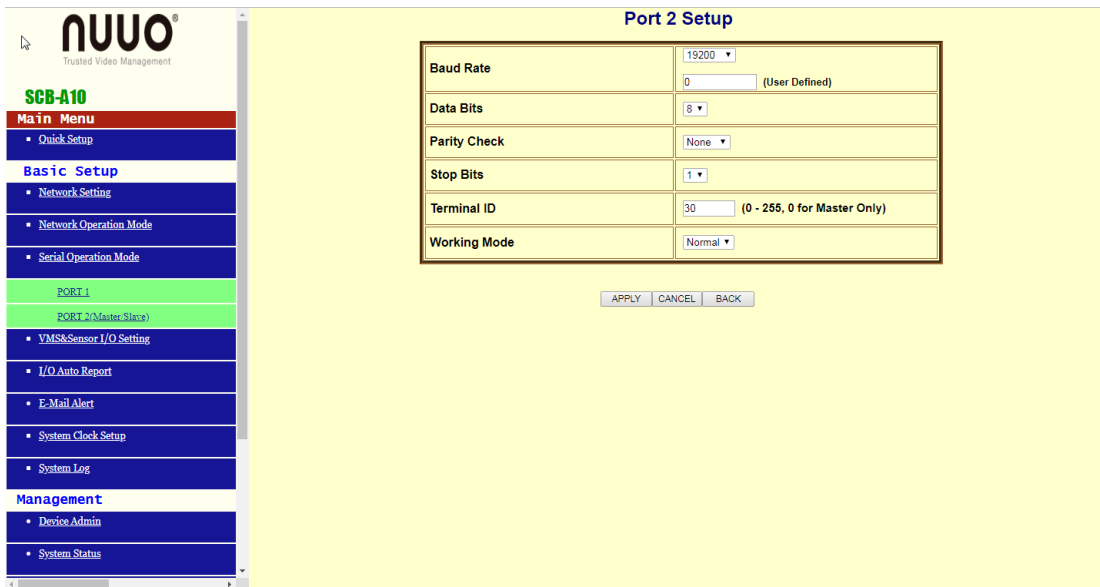
**Quick Setup**

IP Address	10 . 0 . 31 . 99
Subnet mask	255 . 255 . 255 . 0
Gateway	10 . 0 . 31 . 254
Primary DNS	10 . 0 . 3 . 6
<b>Serial Port Mode</b>	
Port 1 Working Mode	Transparent
Port 2 Working Mode	Transparent   TID: 30 (for Slave Only)
<b>I/O Communication Mode</b>	
Connection Mode	TCP SERVER
Connection Port Number	50002
Remote Host IP/Domain Name (For Client Only)	0.0.0.0

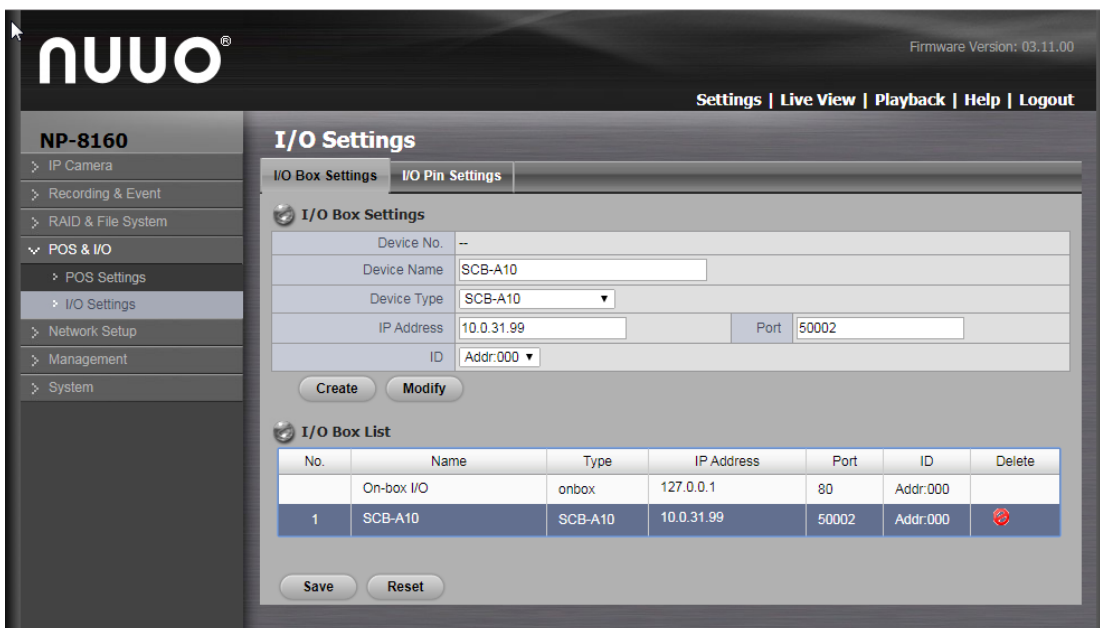
APPLY CANCEL BACK

Serial Operation Mode/ PORT 2 (Master/Slave) 如下圖：

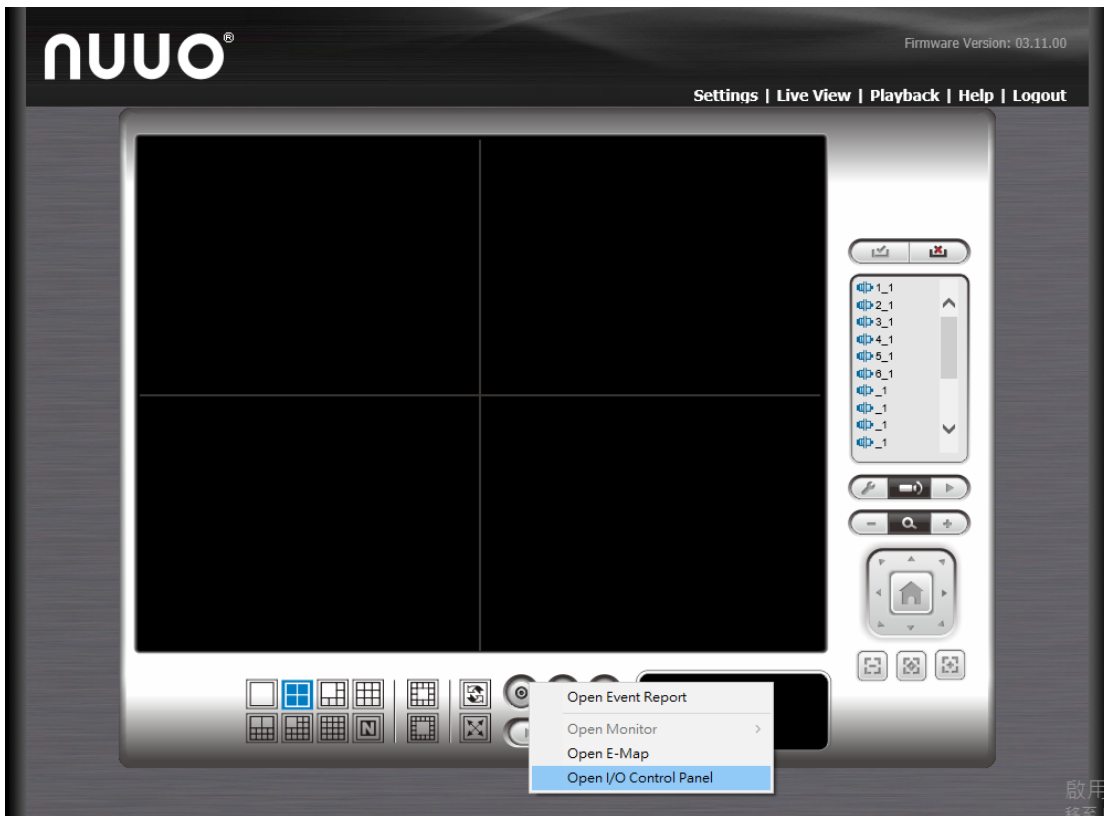
Serial Operation Mode/ PORT 2 (Master/Slave), as shown below:



- 在 SOLO Plus 新增 SCB-A10 device.  
Added SCB-A10 device into SOLO Plus



- 7 到 Live View 開啟 I/O Control Panel.  
Open the I/O Control Panel at Live View setting page

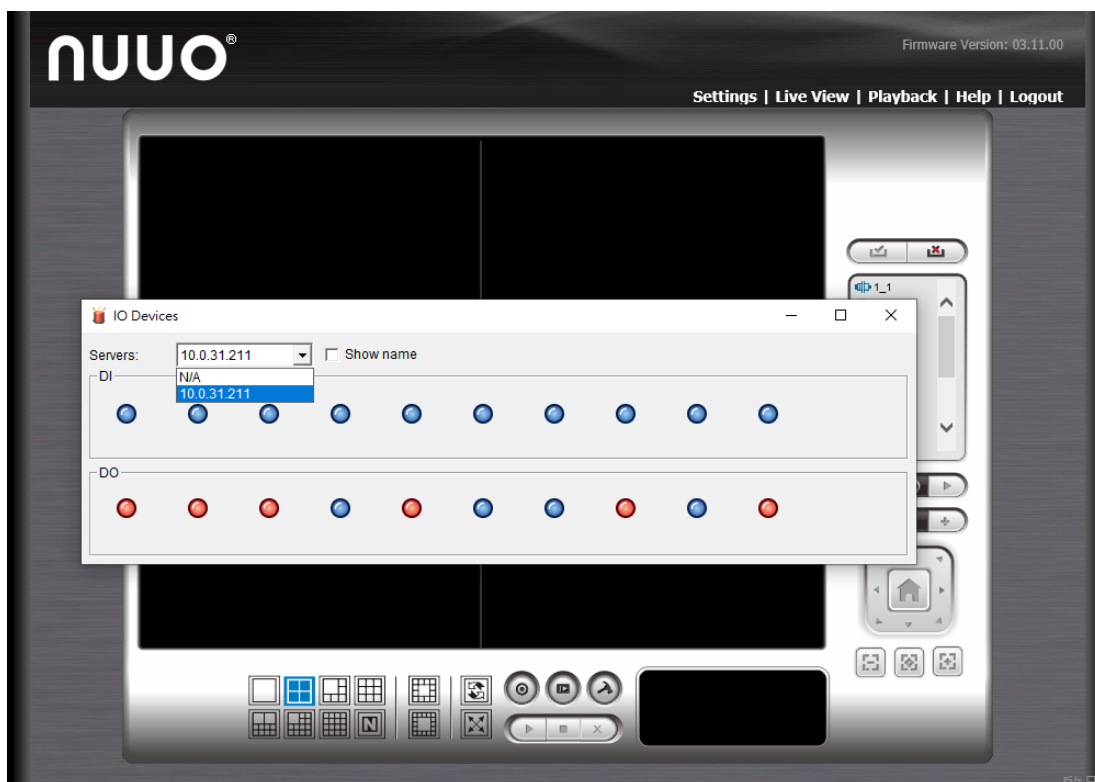


- 選取目前 SOLO Plus 的 IP 位置.  
Select the IP location of SOLO Plus.



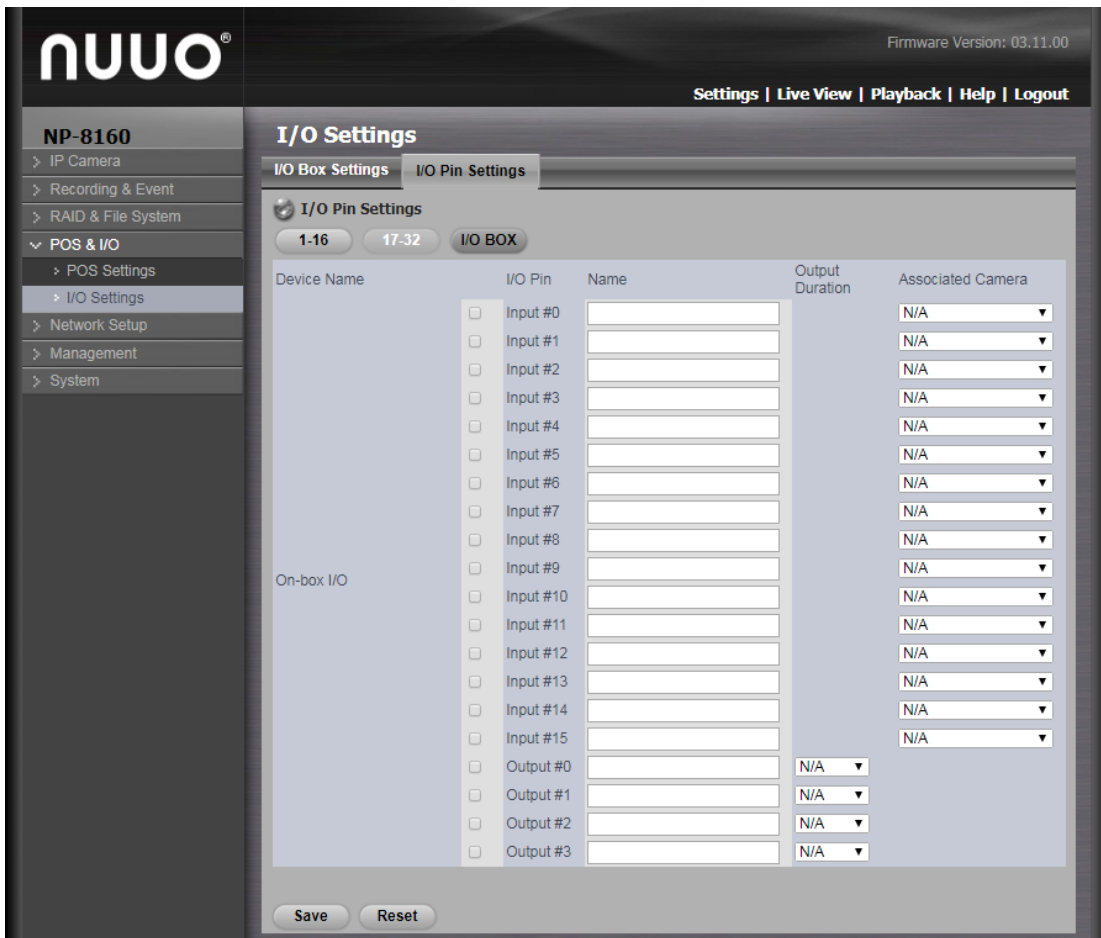
7.1 選取後 SCB-A10 的狀態面板跳出，可以測試 Input/Output 是否有訊號。

After selection, SCB-A10's status panel will show up, you can test whether the Input / Output has a signal or not.





- 8 返回 Solo plus I/O Settings  
Back to Solo plus I/O Settings page

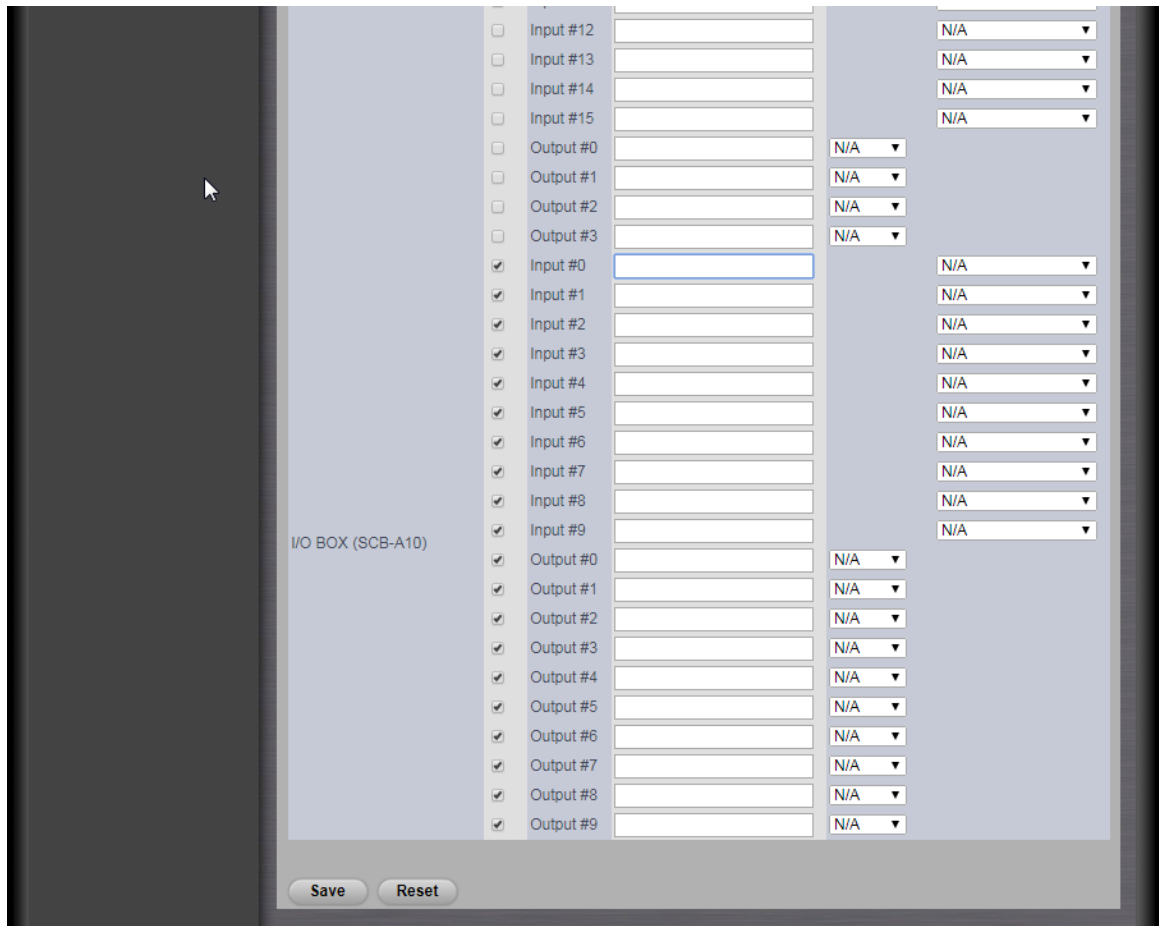


8.1 進入 I/O Pin Settings 畫面

Enter the I / O Pin Settings screen

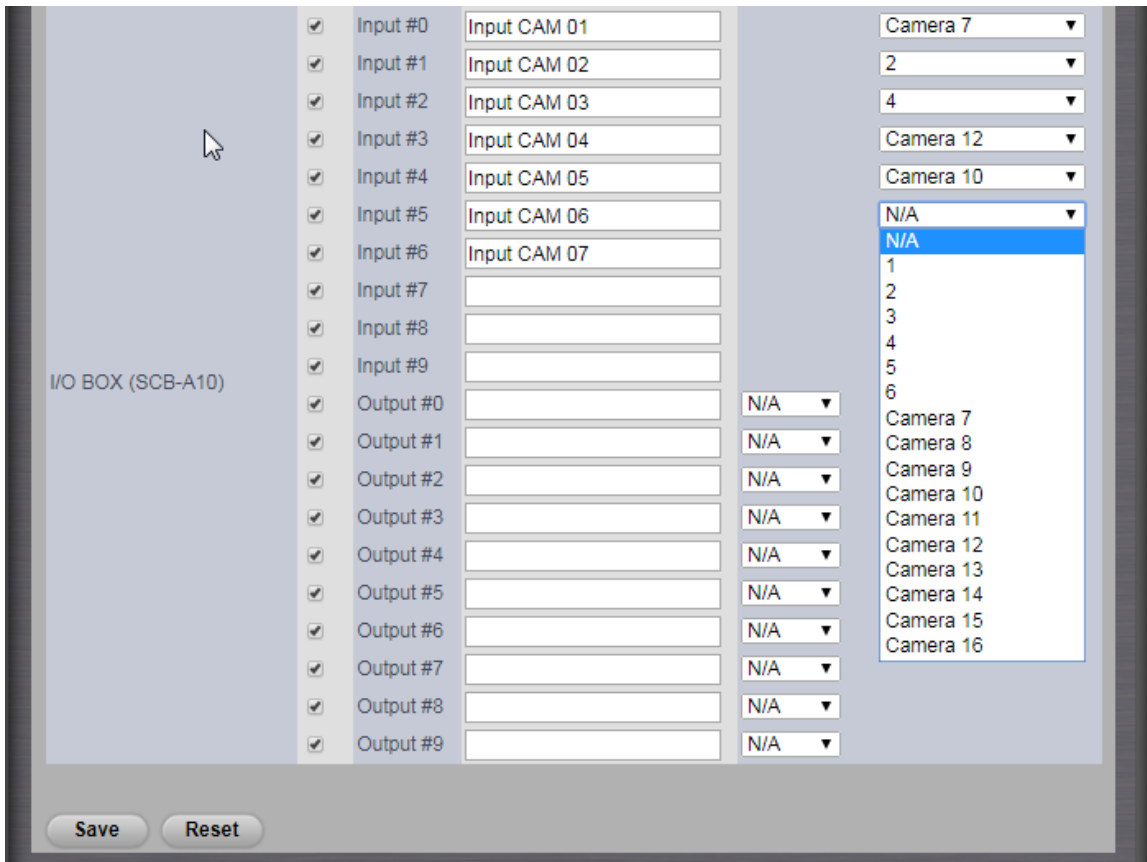
8.1.1 勾選以 Enable 該 I/O port 顯示及控制.

Enable the display and control of the I/O port.



8.1.2 透過 Name 此欄位更改 Input 名稱和指定選擇關聯的相機，該相機畫面會與關聯的 Input 綁在一起。

Can change the input name and specify the camera associated with the selection.



8.1.3 另在 Output Duration 可以設定該 Output 的持續時間。

In addition, it can set the duration of the output.

