



COMPLETE.
INTELLIGENT.
OPEN.
HIKCENTRAL SOLUTION



OUR VISION

At Hikvision, we always strive to develop and deliver the absolute best products and complete end-to-end solutions in the security surveillance industry. A successful surveillance operation is ultimately determined by its management platform. To achieve our vision for the best software-to-hardware solution, a video management platform must be **Complete, Intelligent, and Open.**

**COMPLETE**

HikCentral is compatible with our entire line of Hikvision products including DVRs, NVRs, IPCs, PTZ and dome cameras, transmission displays, traffic products, thermal products, data centers, Hybrid SAN, and EZVIZ products. It offers features such as automatic number plate recognition (ANPR) and people-counting, and integration with access control (coming soon). HikCentral also supports the ONVIF protocol for integration with other camera brands, making it a competitive solution that can satisfy your unique needs and meet your security challenges.

**INTELLIGENT**

HikCentral is a Video Business Intelligence (VBI) solution that provides features such as facial recognition, face matching and searching, and people counting analyses. By extracting valuable information from a database and generating reports to assist your business operations, as well as integrating with access control, entrance & exit automation with ANPR, and alarm management, HikCentral offers you an intelligent solution that improves efficiency and reduces cost.

**OPEN**

HikCentral supports the ONVIF open standard. It's compatible with most mainstream brands and IP cameras with ONVIF support. It supports third-party proprietary protocols of the leading camera manufacturers, with continuous updates. HikCentral also offers an OpenSDK that allows users to develop add-ons on a web client. Such add-ons can be used to integrate with third-party systems.



THREE POWERFUL WAYS TO ACCESS YOUR SURVEILLANCE SYSTEM

01 Control Client



HikCentral’s Control Client is used for daily monitoring in real-time. Powerful and easy-to-use, it includes functionalities such as live view and playback, and enables you to tag relevant video clips so that they can be searched, stored, and viewed by trusted parties. Also, with its flexible alarm management interface, operators can easily identify and handle alarm events.

HIGHLIGHTS

■ Visualized Operation with Interactive E-Map and Smart Video Wall

Multi-layered maps are available for visual display of all devices in an area, providing enhanced situational awareness. Operators can also easily project video onto video walls in live-view mode.

■ Efficient Response with an Intuitive Alarm Management Interface

The Alarm Center facilitates a rapid response to events by offering quick access to all alarms from an on-screen list. From this list, users can access any video triggered and recorded by an alarm. Videos can be viewed in real-time and recorded footage can be simultaneously played back on the same screen.

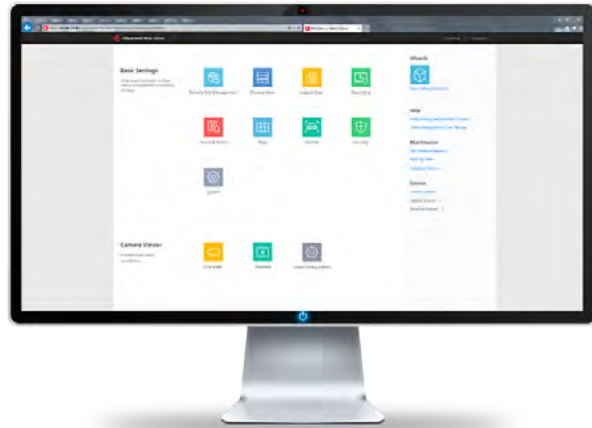
■ Flexible Evidence Handling

To protect critical footage, key video footage can be locked to avoid accidental deletion and/or being overwritten. Video, both tagged and untagged, can be searched and exported in batches.



02 Web Client

HikCentral's Internet-based Web Client provides accessible management of the system allowing you to add devices and configure camera recording schedules, user rights, and event and alarm rules. You can also access camera live view and playback.



HIGHLIGHTS

■ Intuitive User Experience

The Configuration Wizard enables anyone, with or without technical skills, to quickly learn how to use our powerful video management system.

■ Optimized Workflow

The Web Client seamlessly integrates with all HikCentral products. With this client, you can access and manage any HikCentral software feature, such as video surveillance and Automatic Number Plate Recognition.

■ Accessibility from Anywhere

With an Internet connection, you can use a web browser* to access your surveillance system from anywhere to view live video and play back recorded footage.



*HikCentral supports Internet Explorer 10/11, Chrome 35 and above, and Firefox 32 and above.

03 Mobile Client

Mobile surveillance anywhere, anytime – the HikCentral Mobile app is available from the iOS App Store and Google Play. It supports Wi-Fi, 3G, and 4G connectivity.



HIGHLIGHTS

■ Accessibility Anytime, Anywhere

Using a smart phone or tablet, you can view live video or play back recorded footage whenever you need to and from wherever you are.

■ Ready 24/7

Whenever an alarm is triggered in your surveillance system, you'll get notified on the Mobile Client.

■ Fast Event Response

When an event occurs, you can use the Mobile Client to upload real-time videos and location data to the Control Center.





HikCentral PRODUCT SOLUTIONS

The HikCentral eco-system includes two product lines: the advanced software solution and a hardware server solution. The advanced software solution offers the option of implementing a full VMS solution with the flexibility to choose a hardware platform that is convenient for your business. The hardware server solution provides a fast way of delivering and implementing Video Management Software, with VMS preloaded on standard off-the-shelf servers.

01 Advanced Software Solution

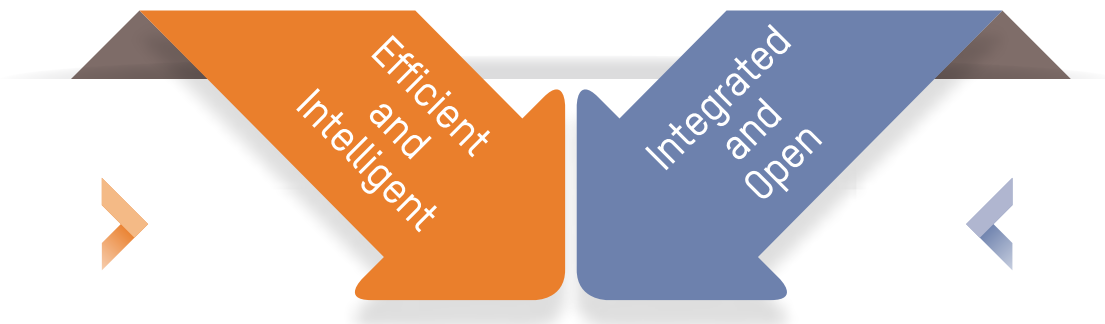
Hikvision’s HikCentral Solution synergizes products, technologies, and functionalities that make central control of security systems easy, efficient, and unified.

Based on a client-server model, it’s a solution that offers enterprises a video management service that helps run your daily business including video recording and playback, alarm management and configuration, Smart Video Wall, ANPR, user authorization and access, facial recognition, SAN, and cloud storage.

Using the Remote Site Management (RSM) module, HikCentral can be easily scaled up to a system network of 100K cameras and centrally manage and configure system resources, user authorizations, and event alarms.

With high scalability, a fail-safe design, and sound data protection for tremendous amounts of information, HikCentral is your central security system.

The real genius of this highly sophisticated system, however, is found in its ease-of-use. It’s easy to set up users, search and play back recorded video, configure alarms, expand visuals on a video wall, back up video footage recordings – and more.



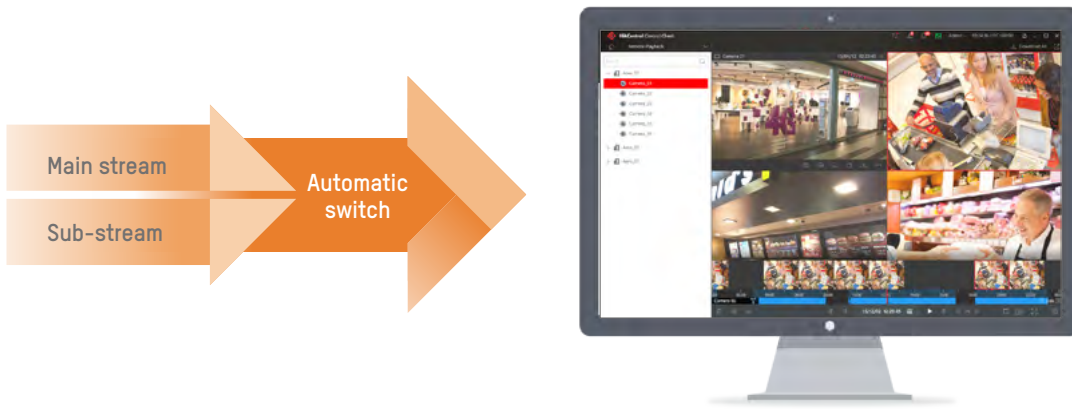
➤ Efficient and Intelligent

When security systems are deployed at multiple locations, collecting the necessary information in one place – and in real-time – is a major challenge.

The HikCentral Solution makes centralized control of localized security systems easy and efficient.

Use HikCentral via Mobile, Web, and Control Center clients to effortlessly run system status and alarm management video search and playback, as well as set up and verify user authorizations and rights management. Data and video footage can also be quickly searched, tagged, and stored securely.

1. Easy Viewing Experience



Main stream and sub-stream automatic switching maintains quality resolution for display when multiple cameras are viewed by one client simultaneously thus saving bandwidth while providing monitoring details.



- In Live View mode, a single Control Client can view up to 256 cameras, live and in real-time
- You can divide and view the cameras in multiple auxiliary screens, and preview up to 3 auxiliary screens
- You can set up two screens for live view, a third screen for playback, and a fourth screen for an interactive map to provide real-time situational awareness

2. Efficient Alarm Management

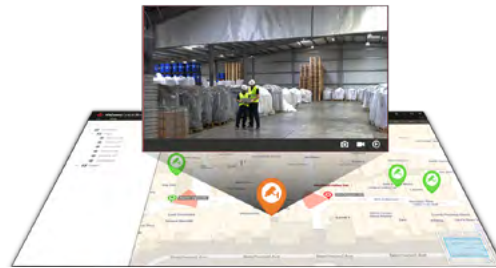


Interactive E-MAP for Quick Alarm Identification

- All cameras can be added to the floor map according to their physical installations, providing enhanced visual and situational awareness
- Device icons will turn red when alarms occur
- Click on a device icon to view the alarm video

Intuitive Alarm Center Interface

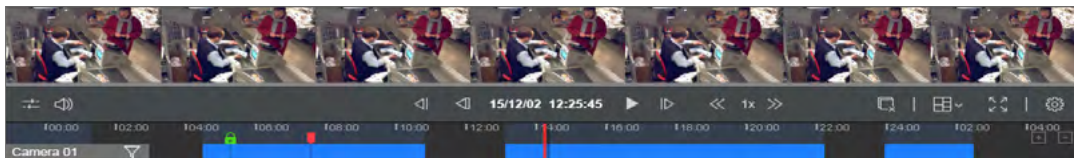
- Gather alarm information, alarm location, and relevant video on just one screen
- All key information can be found on one screen for effective alarm verification and management



3. Powerful Video Search & Playback

Thumbnail Playback

- Drag to view the thumbnail in the timeline for fast identification of one event
- Select from a range of speeds to play back footage forward or in reverse



Embedded Server VCA Support


- Find motion-based events in any scene of interest
- Users can even find past events with cameras where the detections were not originally set; i.e., set detections retroactively to find applicable events
- Server VCA support provides motion analysis, line crossing detection, and intruder detection

4. Footage Protection, Video Tagging and Exporting



Video Tagging

- Add tags for easy sharing and post-event search of video footage
- Tag information supports user-defined or system's alarm-based tags



Overwrite Protection

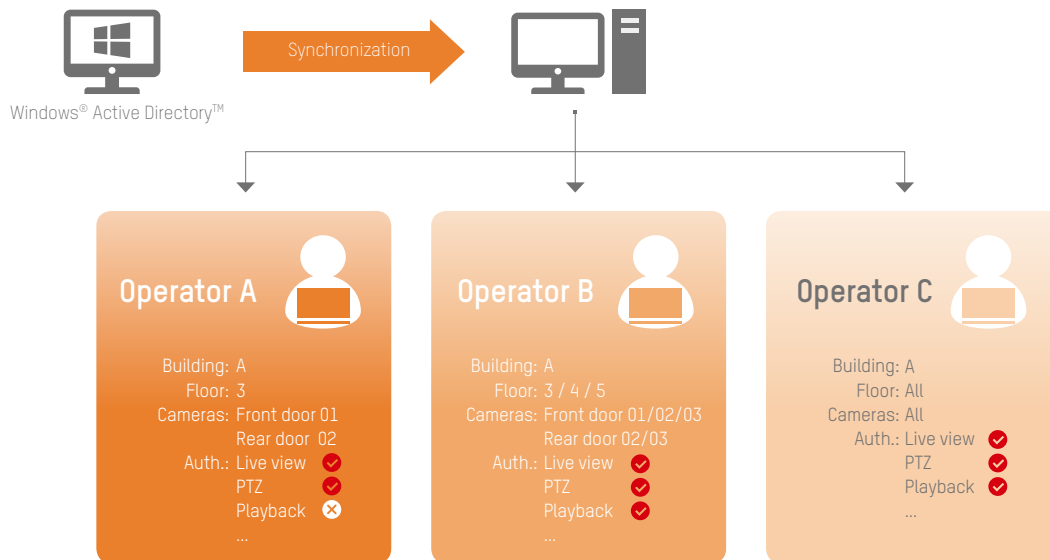
- By adding a "lock" flag, you can protect the video from cyclic rewriting, when you no longer need that video, you can remove the "lock" flag



Video Encryption & Exporting

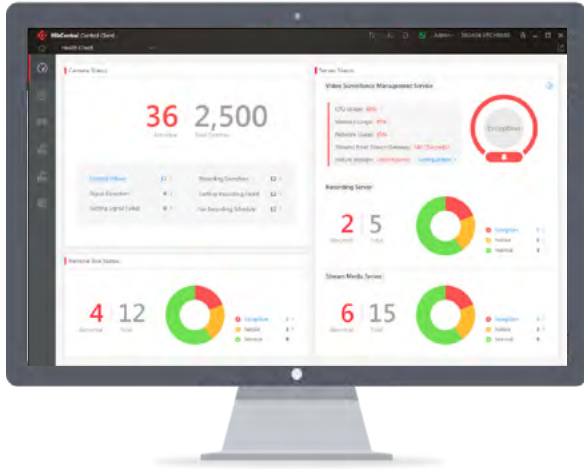
- Video encryption and exporting to authorized recipients for safe sharing of event footage
- Export to AVI format for display with any video player

5. User & Authorization Management



- System administrators can centrally configure user authorizations, control all systems, and assign specified rights to each operator
- Seamlessly integrates with Active Directory™ for efficient assignment and management of user authorizations

6. System Status Dashboard



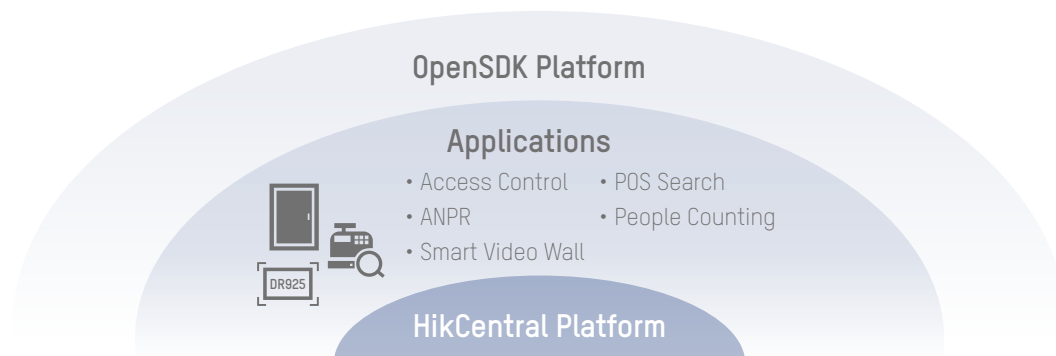
- Display and monitor the entire system's health data in the Dashboard, including offline cameras
- Drill down to individual servers and links for problem solving
- Use this free tool to provide elementary system maintenance and service for large scale projects

Intelligent Surveillance System

The ever-increasing adoption of AI technology in video surveillance provides valuable features such as facial recognition and human body feature analysis that can proactively prevent illegal activities by identifying suspicious people and vehicles in near-real-time. With native support of Hikvision's AI technology and products, HikCentral provides more value and ensures the smooth upgrade of your video surveillance system.

➤ Integrated and Open

From front-end video surveillance, to the control center's video and smart functions, the HikCentral Solution ties it all together. Weaving together robust features like POS search and ANPR technology, HikCentral automates key activities for security personnel. Efficiency is the immediate benefit, but when response times decrease and intelligent safety protocols are implemented, your organization really begins to harness the power of HikCentral.



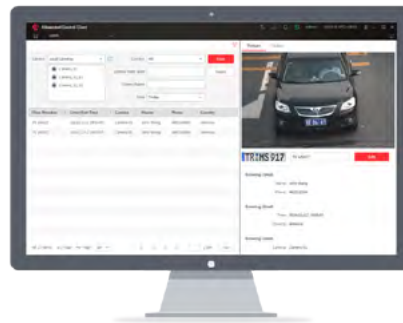
1. RSM Module

- With the Remote Site Management (RSM) module, HikCentral is able to manage super large-scale projects up to 1,024 servers and over 100K+ cameras.
- Installing one RSM server centrally manages all resources, user access rights, and alarms.

2. ANPR Module

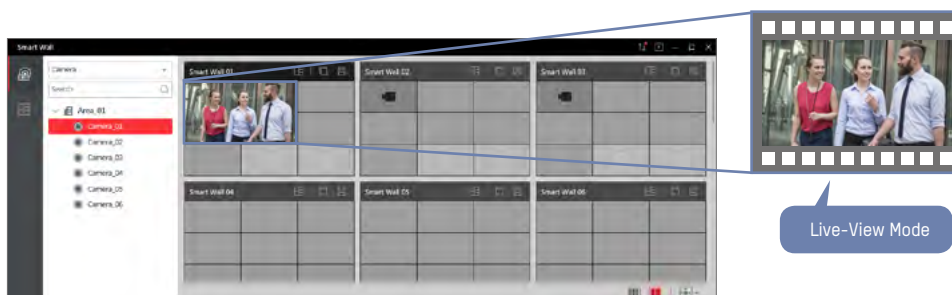
ANPR Module features automatic number plate recognition, vehicle image capture, vehicle list management, and more. Other functions have also been optimized for applications in parking lots, entrances, and exits to reduce costs and improve the end-customer's management efficiency.

- Together with Hikvision ANPR cameras, HikCentral automatically recognizes plate numbers and saves all vehicle entry events
- With barrier integration, it recognizes vehicle number plates and automates access according to VIP lists
- Smart search based on plate number locates specific vehicle entry events

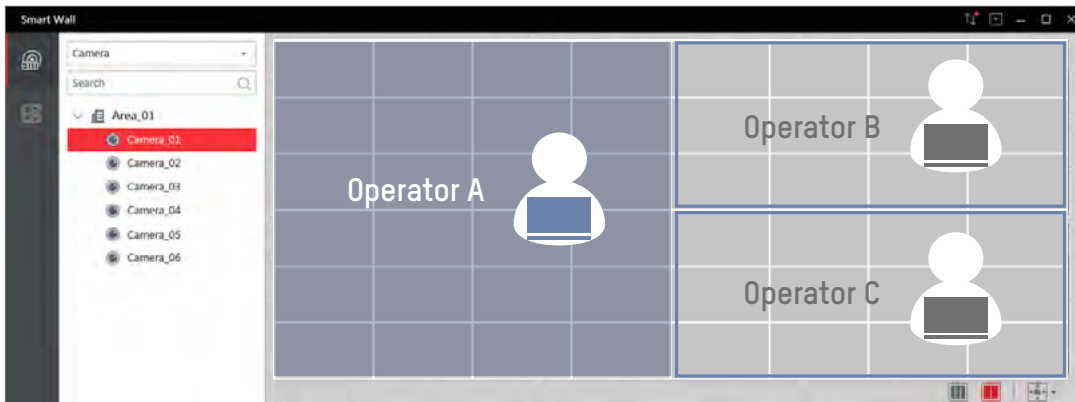


3. Smart Video Wall Module

Smart Video Wall is a powerful software client for high-definition video displays and video sharing. It's designed for efficient central management of video channels along with switching and management of signal windows. It supports multi-user, online operation, and its friendly user interface facilitates fast and easy operation. The Smart Video Wall is at its best in large monitoring centers.



- Operators can choose to project specific cameras in live-view mode onto the video wall to share one video as widely as possible



- Each operator manages assigned sections of the video wall independently, so the video wall display resources can be utilized and shared more efficiently
- Authorizations to manage screens are flexible, with easy configuration and updating as well as simple assignment of rights and resources according to responsibilities and needs

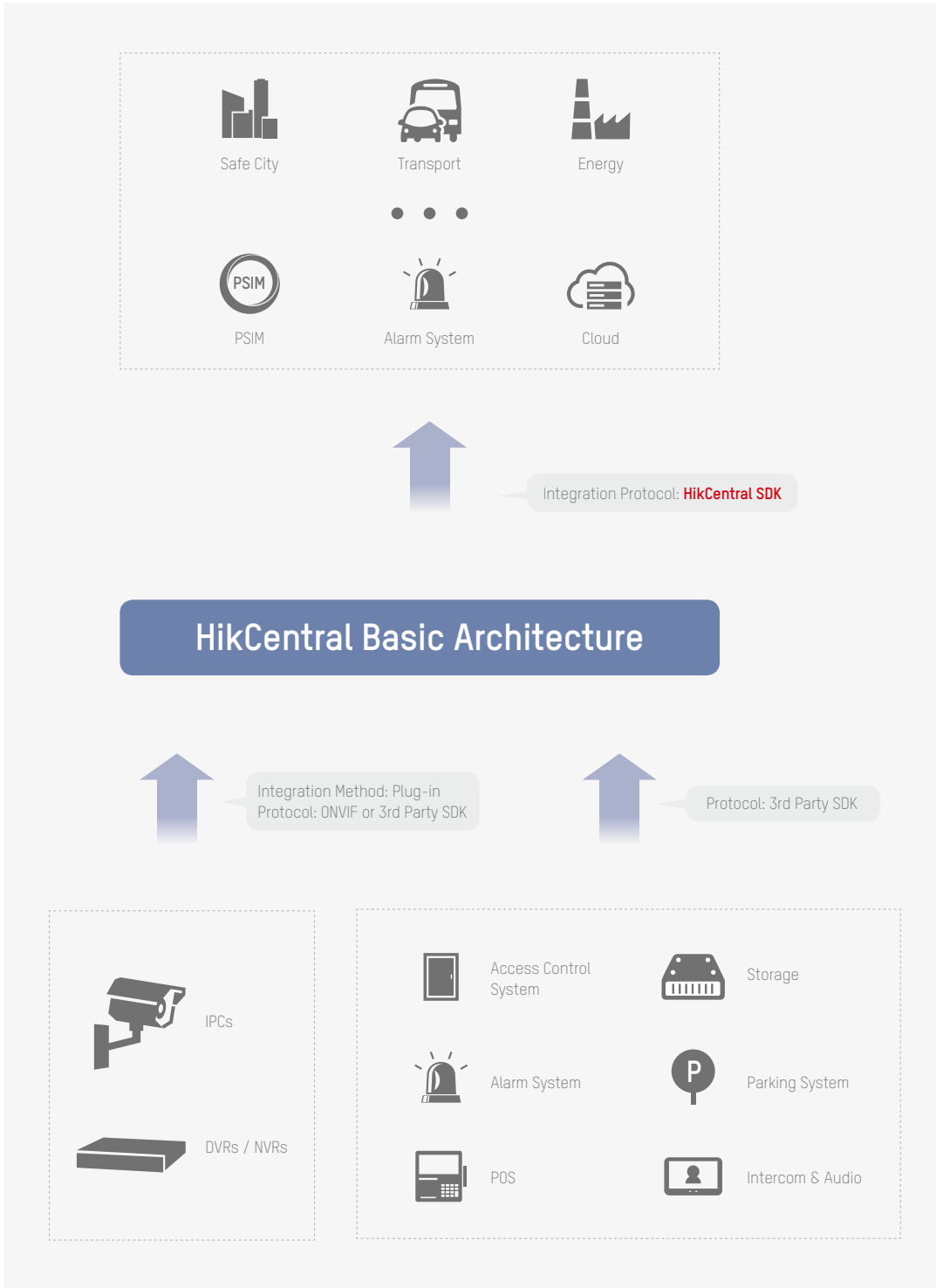
An easy and efficient video wall solution for multi-user video wall applications



4. People Counting

- HikCentral generates helpful, intuitive people-counting reports with graphs that reveal peak business periods.
- Users can click on these peak time periods to play back related footage. As video footage reveals the reason for the high customer traffic, well-informed promotional strategies can then be applied to maximize business efficiency, assign appropriate staffing, and carry out powerful marketing activity.

5. Open Platform



02 Hardware Server Solution

The HikCentral hardware server provides a ready-to-use solution with an activated VMS license, able to support 3,000 channels per server.

By choosing the HikCentral hardware server solution, you have two options to start your system: a server pre-loaded with a base package of 64 activated license channels or a server with 300 activated license channels.

| Specifications | |
|--|-------|
| Maximum IP cameras / NVRs or DVRs / Remote Sites | 1,024 |
| Maximum number of channels | 3,000 |
| Maximum number of alarm inputs or outputs | 3,000 |
| Maximum number of areas | 3,000 |
| Maximum number of roles | 3,000 |
| Maximum number of users | 3,000 |
| Maximum number of E-maps | 1,024 |
| Maximum number of Central Video Recorders | 64 |
| Maximum number of Streaming Server connections | 64 |
| Maximum number of web clients or control clients connection concurrently | 100 |
| Maximum mobile client connection concurrently | 100 |
| Maximum number of ANPR cameras accessible | 20 |



HikCentral IN VERTICAL APPLICATIONS

Powerful HikCentral features can be used across many vertical industries, such as retail, hotels and hospitality, banking, education, and healthcare to keep people and assets safe.

ANPR – Control entry and exit of vehicles and search activity logs to assist investigations.

Access Control with Video (coming soon) – Effectively monitor and control door access to secure your premises.

Face Recognition – Powerful software alerts users to faces stored in the database.

People Counting – Create reports to analyze customer activity and grow your business.

Smart Video Wall – View all critical events from one large monitoring center and respond rapidly.

HikCentral in Vertical Applications

Control Center

Functional Requirements:

Central monitoring of all videos, events & alarms, decoding resources, and video wall management

Products & Solutions:

HikCentral, decoder, keyboard, monitor

Business Area

Functional Requirements:

Video footage, people counting for operational enhancement

Products & Solutions:

HikCentral, people counting camera



Building Entrance

Functional Requirements:

Door access control, facial recognition, video footage recording and search, abnormal door access event alarm

Products & Solutions:

HikCentral Access Control Module (coming soon), Hikvision access control products, and AI cameras and servers

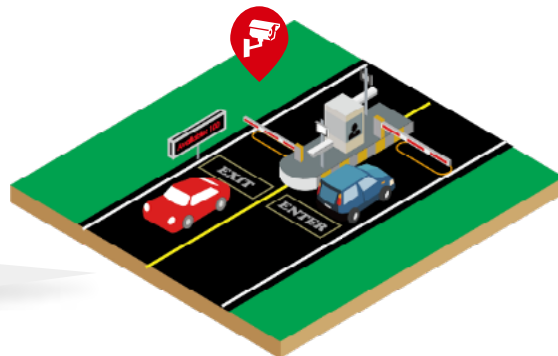
Entrance & Exit

Functional Requirements:

Vehicle entrance recording and search, plate number recognition, blacklist alarm, whitelist vehicle entrance automation

Products & Solutions:

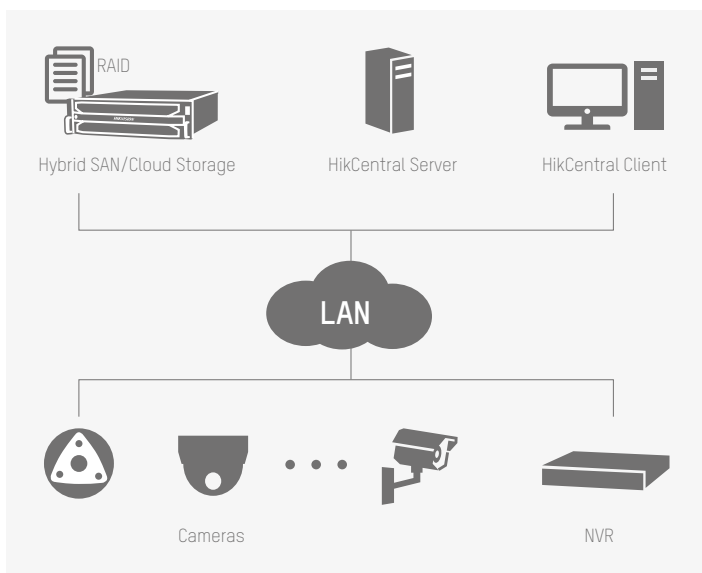
HikCentral ANPR module, Hikvision ANPR camera





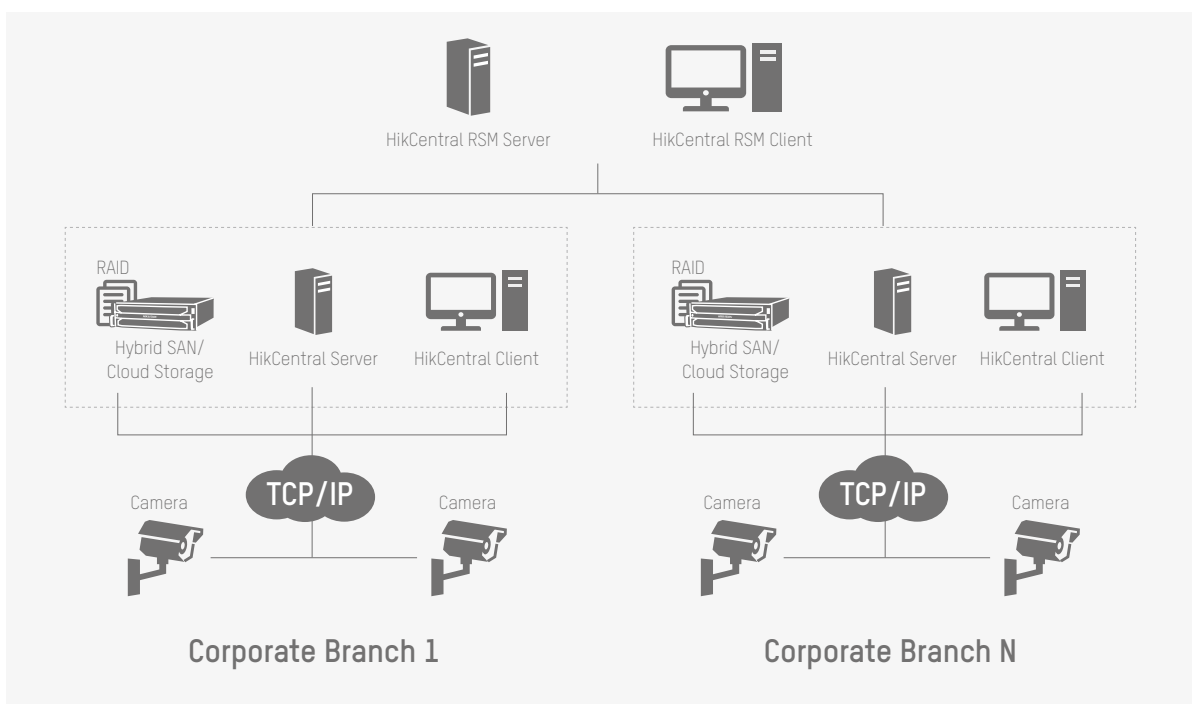
TYPICAL SOLUTION DEPLOYMENT STRUCTURE

01 Solution for Medium to Large Projects



- 1 HikCentral CMS Server
- Access and manage up to 3,000 cameras
- Up to 200 concurrent users (web/PC/mobile)

02 Solution for Super Large Projects

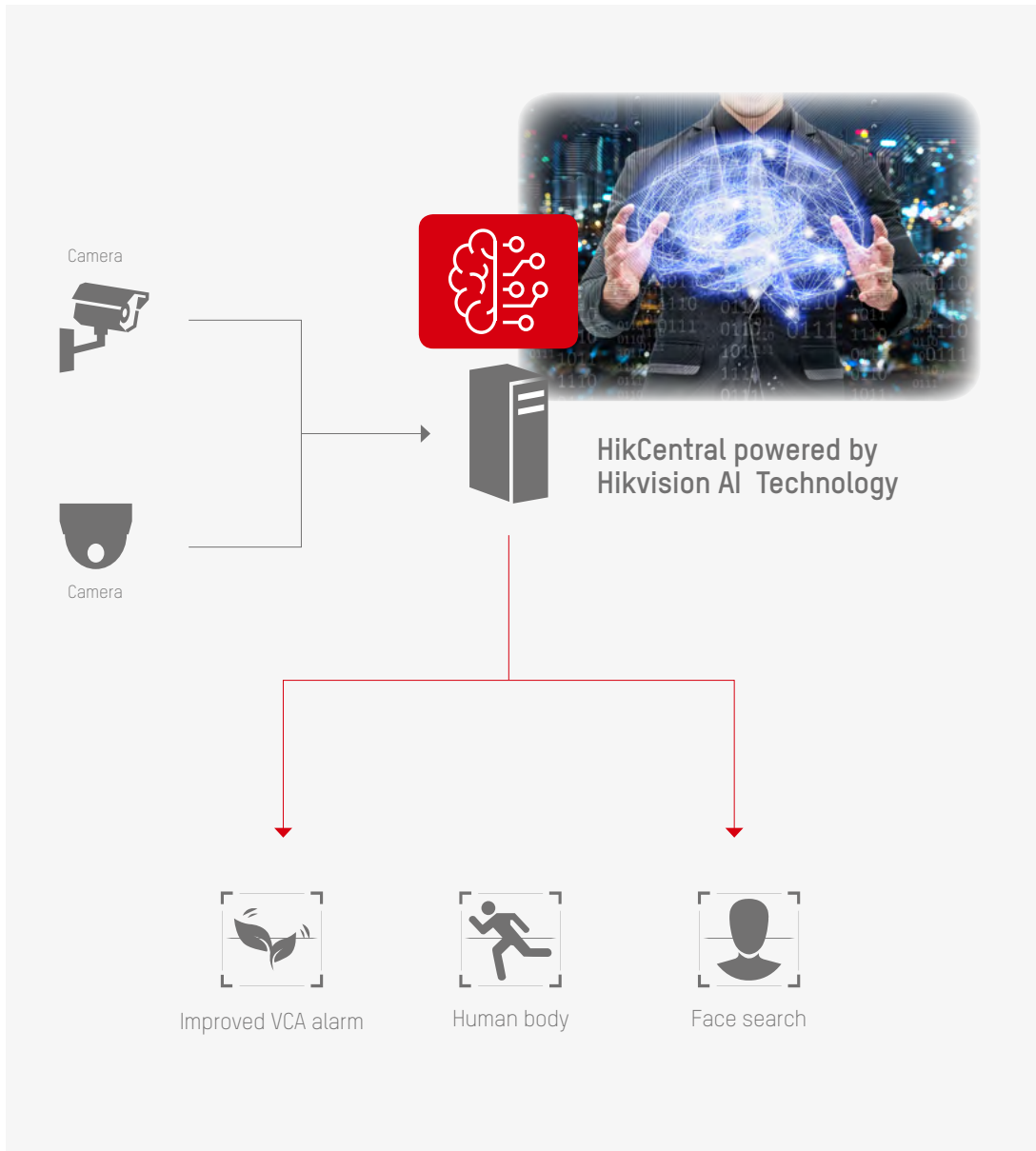


- Up to 1,024 HikCentral CMS servers supported, covering 1,024 large branches
- 1 RSM server for central management
- Access and manage up to 100K+ cameras



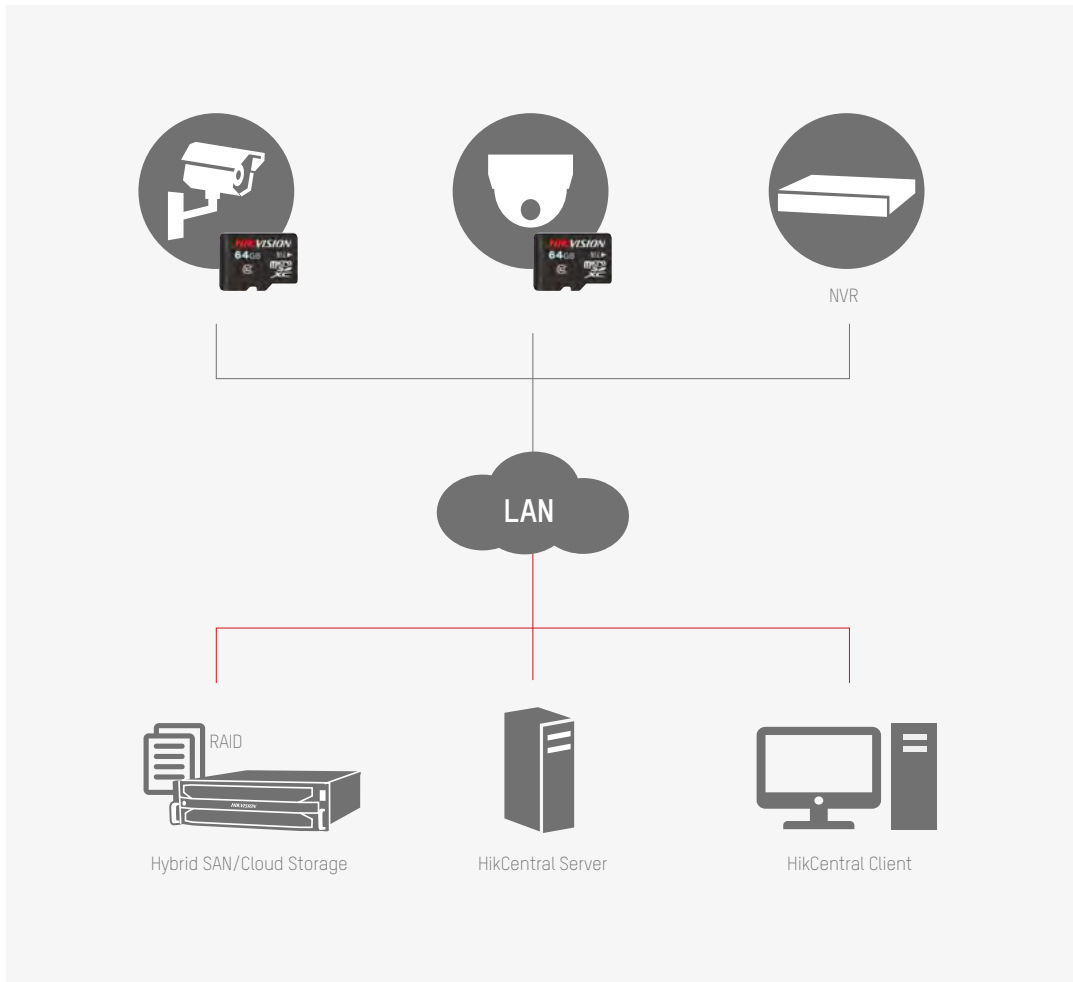
FEATURED PRODUCTS AND SOLUTIONS WITH HikCentral

01 AI solution features higher accuracy and increased efficiency for critical infrastructure



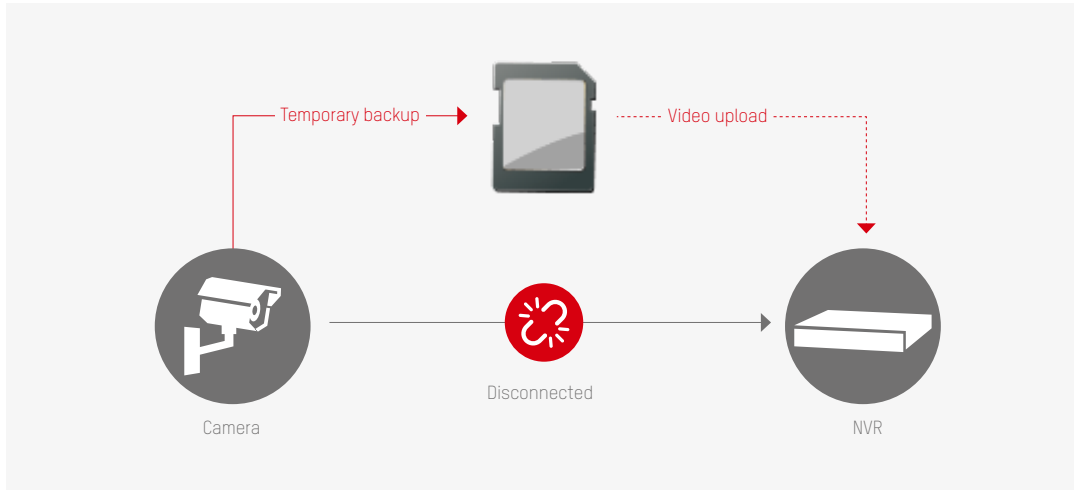
- HikCentral supports Hikvision AI technology, providing expansive applications to meet the needs of a multitude of scenarios
- HikCentral maximizes the value of your video surveillance system by ensuring a smooth upgrade to the AI solution

02 Edge + NVR storage and centralized storage solutions for enhanced footage and data safety



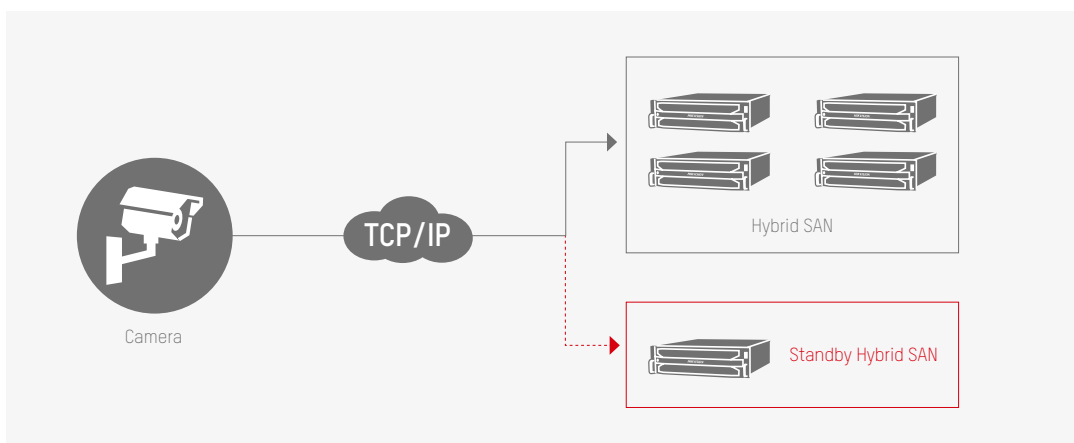
- Network cameras with SD card and edge storage supported
- Local HD storage on NVR
- Central storage with Hikvision enterprise network storage systems: Hybrid SAN or cloud storage
- ANR support to transfer video footage from edge storage to NVR or Hybrid SAN in case of network interruption
- Scheduled backup of video storage from NVR to Hybrid SAN, leaving bandwidth to higher priority network needs

03 Auto Network Replenishment (ANR)



- SD card automatically backs up video in case of network interruption
- Data will be transferred from SD card to back-end device when the connection is restored

04 Powerful and cost-effective storage solution with 10+1 storage failover



- 10+1 equipment hot-backup, if more than 1 of the 10 Hybrid SAN nodes ceases to function
- Hot spare will take over traffic of all problematic nodes



COMPLETE. INTELLIGENT. OPEN.
HIKCENTRAL SOLUTION

Distributed by



HIKVISION

Headquarters

No.555 Qianmo Road, Binjiang District,
 Hangzhou 310051, China
 T +86-571-8807-5998
overseasbusiness@hikvision.com

Hikvision USA
 T +1-909-895-0400
sales.usa@hikvision.com

Hikvision Australia
 T +61-2-8599-4233
salesau@hikvision.com

Hikvision Hong Kong
 T +852-2151-1761
info.hk@hikvision.com

Hikvision Poland
 T +48-22-460-01-50
info.pl@hikvision.com

Hikvision Indonesia
 T +62-21-2933759
Sales.Indonesia@hikvision.com

Hikvision Europe
 T +31-23-5542770
sales.eu@hikvision.com

Hikvision Italy
 T +39-0438-6902
info.it@hikvision.com

Hikvision India
 T +91-22-28469900
sales@pramahikvision.com

Hikvision Canada
 T +1-866-200-6690
sales.canada@hikvision.com

Hikvision Thailand
 T +662-275-9949
sales.thailand@hikvision.com

Hikvision UK & Ireland
 T +01628-902140
sales.uk@hikvision.com

Hikvision South Africa
 Tel: +27 (10) 0351172
sale.africa@hikvision.com

Hikvision Brazil
 T +55 11 3318-0050
Latam.support@hikvision.com

Hikvision Turkey
 T +90 (216)521 7070- 7074
sales.tr@hikvision.com

Hikvision Colombia
sales.colombia@hikvision.com

Hikvision UAE
 T +971-4-4432090
salesme@hikvision.com

Hikvision Singapore
 T +65-6684-4718
sg@hikvision.com

Hikvision France
 T +33(0)1-85-330-450
info.fr@hikvision.com

Hikvision Kazakhstan
 T +7-727-9730667
nikia.panfilov@hikvision.ru

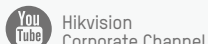
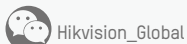
Hikvision Russia
 T +7-495-669-67-99
saleru@hikvision.com

Hikvision Korea
 T +82-(0)31-731-8817
sales.korea@hikvision.com

Hikvision Spain
 T +34-91-737-16-55
info.es@hikvision.com

Hikvision Tashkent
 T +99-87-1238-9438
uzb@hikvision.ru

Follow us on social media to get the latest product and solution information



www.hikvision.com