

DS-3E0318P-E/M(C) 100 Mbps PoE Switch



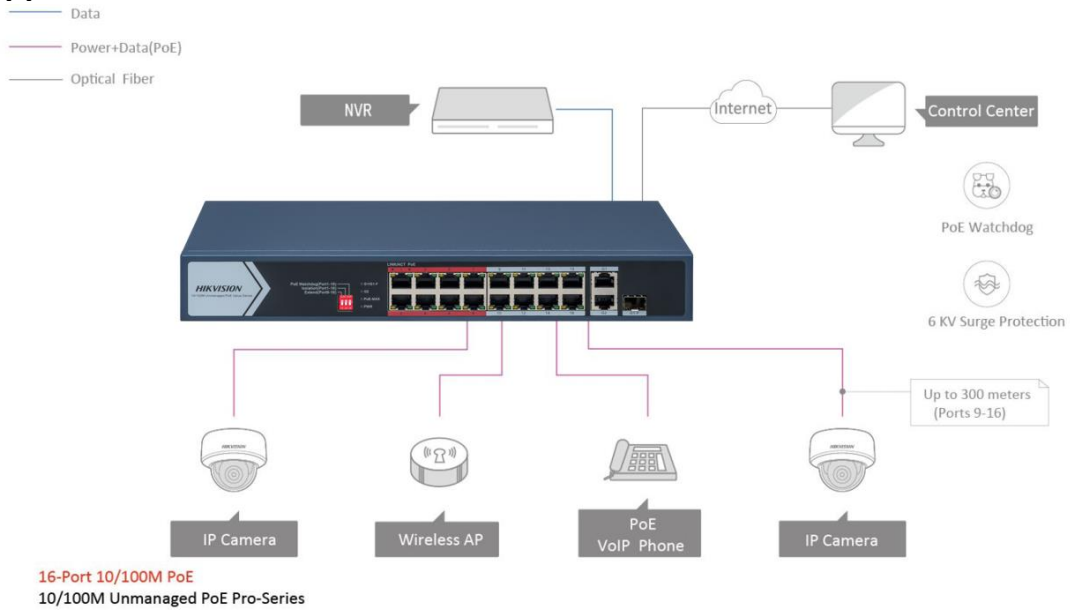
DS-3E0318P-E/M(C) switches are layer 2 100 Mbps PoE switches, providing advanced PoE power supply technology and Gigabit networks design on the basis of high-performance access to ensure stable data upload. The switches support long range, port isolation, and PoE watchdog function.

- **Intelligent PoE Management**
When the power supply exceeds the limit, PoE ports intelligently manage the power supply, which extends the switch lifetime.
- **Up to 300 m Long Range PoE Transmission**
The distance between IPCs and switch can reach maximum 300 meters.
- **4/8-Core Adaptive Power Supply with Less Power Loss**
8-core power supply reduces the power loss on cables.
- **6 kV Surge Protection to Improve Reliability in Harsh Environment**
The built-in surge protection device protects the switch from the sudden lightning surge in harsh environment.
- **Design for Video Transmission**
VIP port ensures important data transmission when network congestion occurs.

▪ Specification

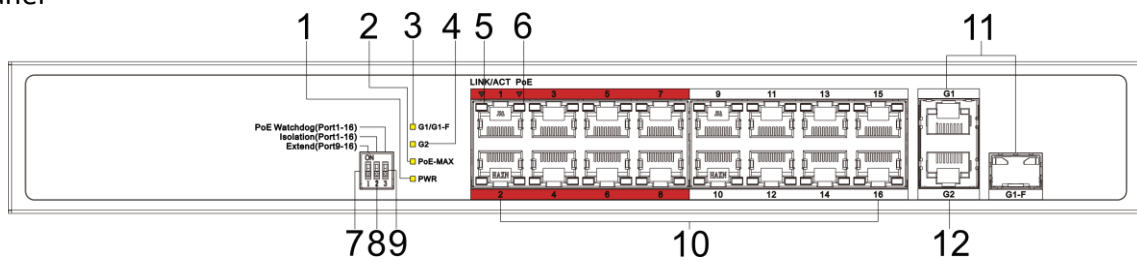
Model		DS-3E0318P-E/M(C)
Network Parameters	Ports	16 × 10/100 Mbps PoE RJ45 port, 1 Gigabit RJ45 port, 1 Gigabit combo port
	Port Type	RJ45 port, full duplex, MDI/MDI-X adaptive
	Working Mode	Standard mode (default); Extend mode
	Standard	IEEE 802.3, IEEE 802.3u, IEEE 802.3x
	Forwarding Mode	Store-and-forward switching
	High Priority Ports	Ports 1 to 8
	MAC Address Table	8 K
	Switching Capacity	7.2 Gbps
	Packet Forwarding Rate	5.356 Mpps
	Internal Cache	4 Mbits
PoE Power Supply	PoE Standard	IEEE 802.3af, IEEE 802.3at
	PoE Power Pin	End-span: 1/2(-), 3/6(+) Mid-span: 4/5(+), 7/8(-) 8-pin power: 1/2(-), 3/6(+), 4/5(+), 7/8(-)
	PoE Port	Ports 1 to 16
	Max. Port Power	30 W
	PoE Power Budget	130 W
Dialing Function	Long Range	Ports 9 to 16: up to 300 m; and the speed rate of the port is 10 Mbps.
General	Dimensions (W × H × D)	335.0 mm × 44.5 mm × 175.8 mm (13.19" × 1.75" × 6.92")
	Shell	Metal material
	Gross Weight	2.58 kg (5.69 lb)
	Net Weight	1.80 kg (4.00 lb)
	Operating Temperature	0 °C to 45 °C (32 °F to 113 °F)
	Operating Humidity	5% to 95% (no condensation)
	Storage Temperature	-40 °C to 85 °C (-40 °F to 185 °F)
	Storage Humidity	5% to 95% (no condensation)
	Power Supply	AC 100 to 240 V, 50/60 Hz, Max. 2.5 A
	Power Consumption in Idle	20 W
Max. Power Consumption	150 W	
Approval	EMC	FCC (47 CFR Part 15, Subpart B); CE-EMC (EN 55032: 2015, EN 61000-3-2: 2014, EN 61000-3-3: 2013, EN 55024: 2010 +A1: 2015); RCM (AS/NZS CISPR 32: 2015); IC (ICES-003: Issue 6, 2016)
	Safety	UL (UL 60950-1); CB (IEC 60950-1:2005 + Am 1:2009 + Am 2:2013); CE-LVD (EN 60950-1:2005 + Am 1:2009 + Am 2:2013)
	Chemistry	CE-RoHS (2011/65/EU); WEEE (2012/19/EU); Reach (Regulation (EC) No 1907/2006)

▪ **Typical Application**

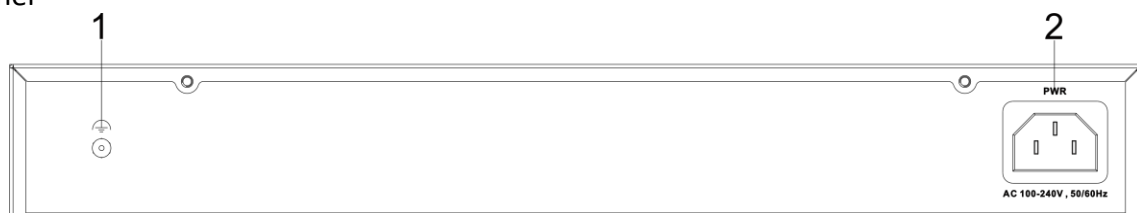


▪ **Physical Interface**

Front Panel



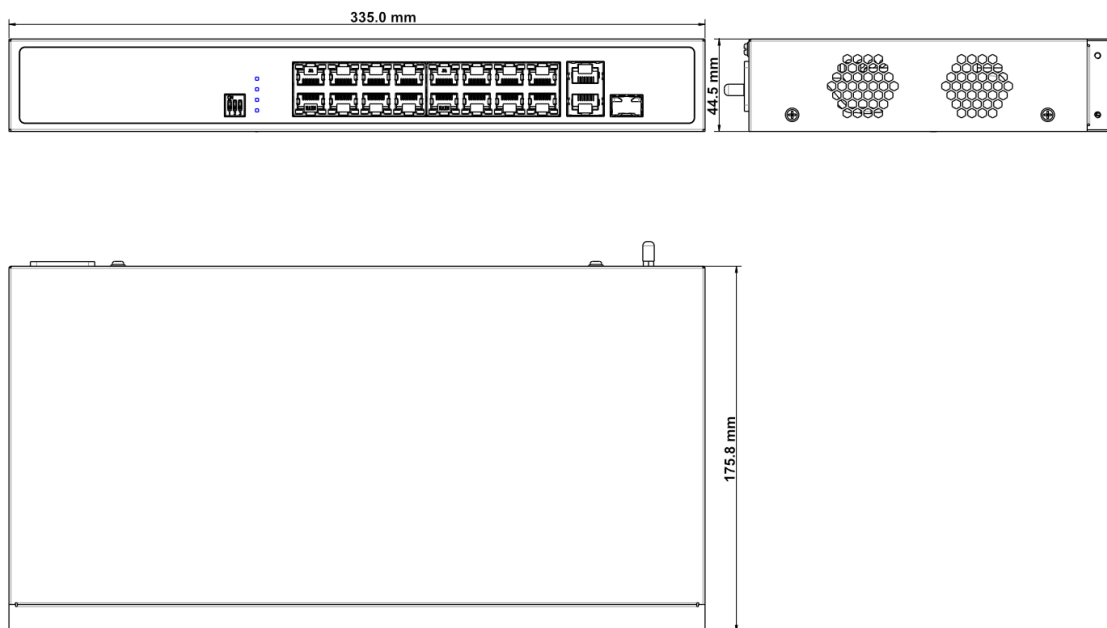
Rear Panel



▪ **Available Model**

DS-3E0318P-E/M(C)

Dimension



Headquarters

No.555 Qianmo Road, Binjiang District,
Hangzhou 310051, China
T +86-571-8807-5998
www.hikvision.com



Follow us on social media to get the latest product and solution information.

