

## iDS-TCH44P-B Multi-Lens LPR Camera



- Built-in triple-lens camera with 4 MP CMOS low illumination sensor. The left and right ones are motor-driven vari-focal lenses. The middle one is fixed-focal lens.
- Supports to recognize the number of vehicle axles and tyres based on the video detection.
- Supports to capture and output the complete side view picture of the vehicle with extra long body. Supports to capture pictures of the vehicle head and tail.
- Supports vehicle capture and corresponding functions: motor vehicles capture, LPR, and vehicle features recognition (main brand, sub-brand, and color).
- Adjustable built-in supplement light.
- Low illumination. Color: 0.01 Lux @ (F1.5, AGC ON).
- H.265 and H.264 encoding. Max. full HD 2688 × 1520 @ 25 fps real-time image output with ultra-low time delay and ultra-low bit rate.
- Dual streams. H.265/H.264 encoding with high compression ratio and flexibility. MJPEG encoding. Captured pictures adopt JPEG encoding, and the quality of pictures can be set.
- ROI video compression technology provides high compression ratio and flexible processing.
- D-WDR.
- Supports to set the overlay information on the videos and capture pictures independently.
- Supports multiple pictures upload mode (cloud storage, FTP, Hikvision SDK arming, etc.).
- Supports hardware watchdog.
- Supports to import and export the configuration file.
- IP65 dustproof, waterproof, and anti-surge protection.

## ▪ Specification

Camera	
Image Sensor	4 MP (1/1.8" CMOS) × 3
Max. Resolution	2688 × 1520. No limit on the width of combined vehicle body pictures.
Min. Illumination	Color: 0.01 Lux @ (F1.5, AGC ON)
Shutter Time	50 us to 20000 us
Lens	
Focal Length & FOV	Left& Right: 4 to 11 mm, motor-driven vari-focal lens Horizontal FOV: 114.7° to 41.9°; Vertical FOV: 59.4° to 23.6°; Diagonal FOV: 141.5° to 48.1° Middle: 3.2 mm, C/S-mount fixed-focal lens Horizontal field: 136°, Vertical field: 73° Diagonal FOV: 156°
Focus	Manual
Video	
Main Stream	50 Hz: 25 fps (2688 × 1520, 1920 × 1080, 1280 × 720) 60 Hz: 30 fps (2688 × 1520, 1920 × 1080, 1280 × 720)
Sub Stream	1920 × 1080, 704 × 576
Video Compression	H.264 and H.265 encoding Main stream: H.265/H.264/MJPEG Sub-stream: H.265/H.264/MJPEG
Video Bit Rate	32 Kbps to 16 Mbps
H.264 Type	Baseline profile/Main profile/High profile
H.265 Type	Baseline profile/Main profile/High profile
Network	
Protocols	TCP/IP, HTTP, HTTPS, FTP, DNS, RTP, RTSP, RTCP, NTP, IPv6, UDP
Simultaneous Live View	Up to 6 channels
API	ISAPI, SDK
User/Host	Up to 32 users 3 user levels: administrator, operator, and user
Security	Password protection, HTTPS encryption, digest authentication for HTTP/HTTPS
Network Storage	MicroSD/TF card (128 GB), local storage and CVR, NVR, ANR
Client	iVMS-4200 (Only for video live view), HikCentral Professional V2.1 or above, HikCentral Master , HikCentral Master Lite
Web Browser	IE8-IE11
Image	
Image Settings	Saturation, brightness, contrast, sharpness, AGC, and white balance are adjustable via client software or web browser.
Image Enhancement	BLC, HLC, 3D DNR
WDR	Supported

<b>Interface</b>	
Ethernet Interface	1 RJ45 10 M/100 M/1000 M self-adaptive Ethernet interface
On-board Storage	Built-in microSD/TF card, up to 128 GB
RS-485	1 RS-485 interface (half duplex, HIKVISION)
Alarm Input	2 × IO input interface
Embedded LED Supplement Light	Supported
<b>Event</b>	
Basic Event	HDD Error, network disconnected, IP address conflicted, vehicle detector exception, traffic light detector exception
<b>Road Traffic and Vehicle Detection</b>	
Trigger Mode	Video trigger
Smart Function	License plate recognition, vehicle axles and tyres number recognition, and vehicle features recognition
LPR Countries/Regions	<p>Middle East: The United Arab Emirates (Abu Dhabi, Ajman, Dubai, Fujairah, Ras Al Khaimah, Sharjah and Umm Al Quwain), Qatar, Iran, Iraq, Egypt, Jordan, Kuwait, Saudi Arabia, Pakistan, Oman, Lebanon, Bahrain</p> <p>Africa: Nigeria, Kenya, Ivory Coast, South Africa, Tanzania, Mauritius, Morocco, Tunisia, Sierra Leone, Zambia, Ghana, Zimbabwe, Uganda, Angola, Ethiopia, Senegal, Algeria</p> <p>Asia-Pacific: Australia, New Zealand, Indonesia, Malaysia, Singapore, South Korea, Thailand, Vietnam, the Philippines, Hong Kong, Macao, Taiwan, Burma, India, Mongolia, Cambodia, Laos, Bangladesh</p> <p>America: The United States of America, Canada, Argentina, Chile, Paraguay, Uruguay, El Salvador, Bolivia, Colombia, Brazil, Ecuador, Peru, Mexico, Panama, Costa Rica, Trinidad and Tobago, the Dominican Republic, Guatemala</p> <p>Europe: Turkey, Croatia, Slovakia, Czech Republic, Bulgaria, the Republic of North Macedonia, Hungary, Greece, Poland, France, Netherlands, Switzerland, Spain, the UK, Ireland, Germany, Italy, Austria, Israel, Palestinian State, Belgium, Luxembourg, Albania, Kosovo</p> <p>Russian-Speaking Regions: Azerbaijan, Belarus, Kazakhstan, Lithuania, Georgia, Estonia, Latvia, Russia, Ukraine, Moldova, Uzbekistan, Kyrgyzstan, Armenia</p>
No License Plate Detection	Supported
<b>General</b>	
Firmware Version	V4.5.7
Operating System	Linux
Power	100 to 240 VAC
Material	Aluminum alloy
Dimension	With package: 1925 mm × 410 mm × 370 mm (75.7" × 16.14" × 14.56")
Weight	Camera: approx. 19 ± 0.5 kg (41.8 ± 1.1 lb.)
Operating Condition	Temperature: -30 °C to 70 °C (-22 °F to 158 °F) Humidity: 95% or less (non-condensing)

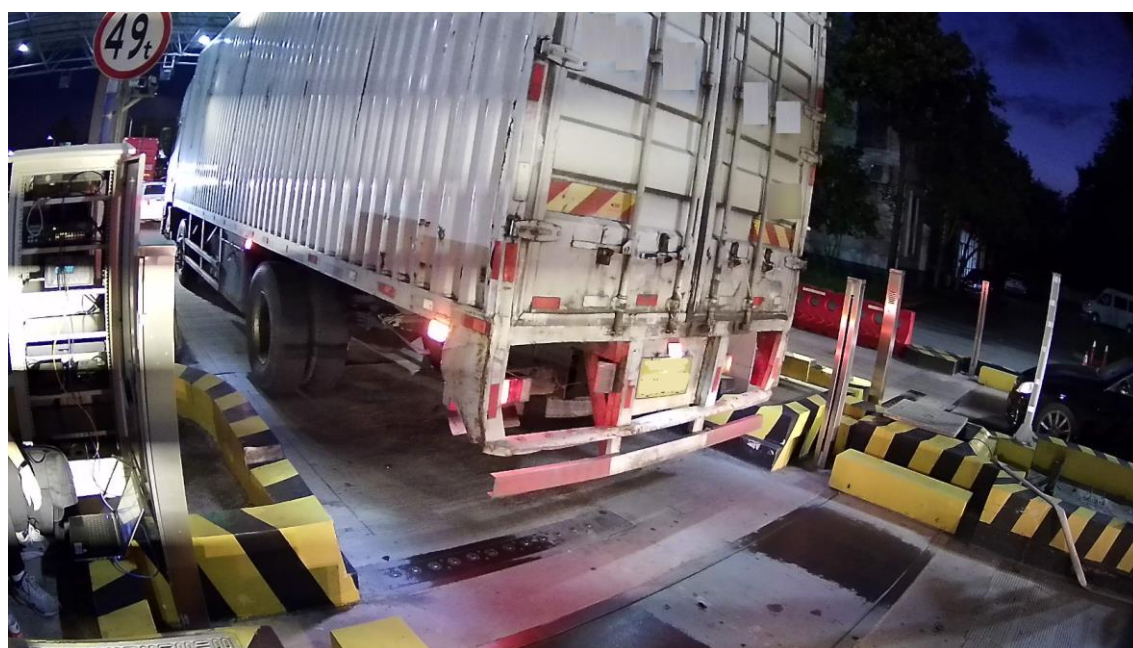
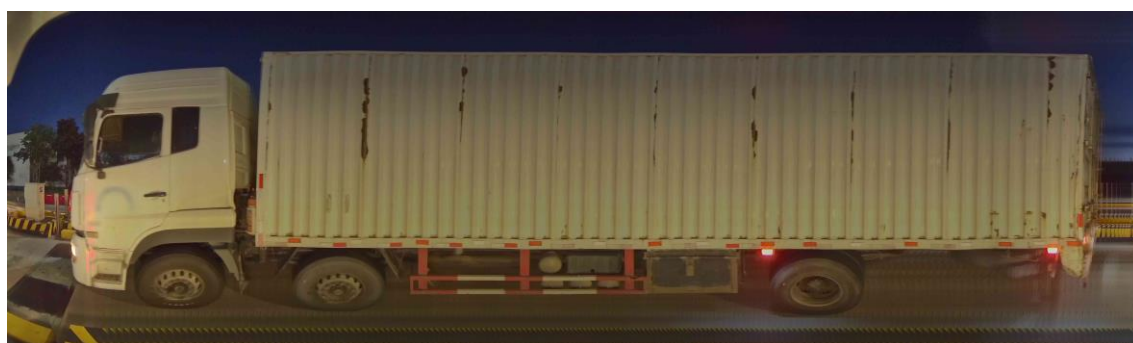
---

General Function	One-key reset, three streams, heartbeat, password protection, watermark
Power Consumption	60W max
<b>Approval</b>	
Protection	IP65

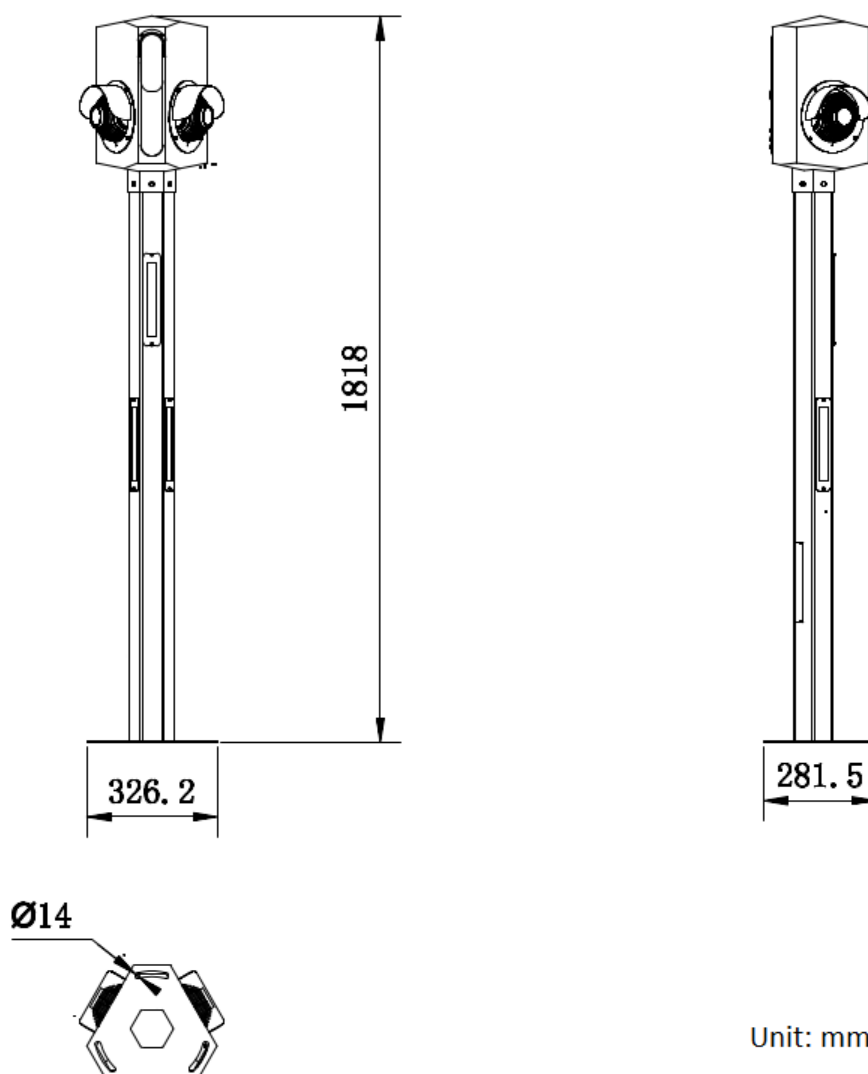
**▪ Available Model**

iDS-TCH44P-B/0411/03

▪ Typical Application



Dimension



Unit: mm

Headquarters

No.555 Qianmo Road, Binjiang District,  
Hangzhou 310051, China  
T +86-571-8807-5998  
www.hikvision.com



Follow us on social media to get the latest product and solution information.



Hikvision



HikvisionHQ



HikvisionHQ



Hikvision\_Global



Hikvision  
Corporate Channel



hikvisionhq