



Outdoor Guidance LED Screen

Quick Start Guide

Table of Contents

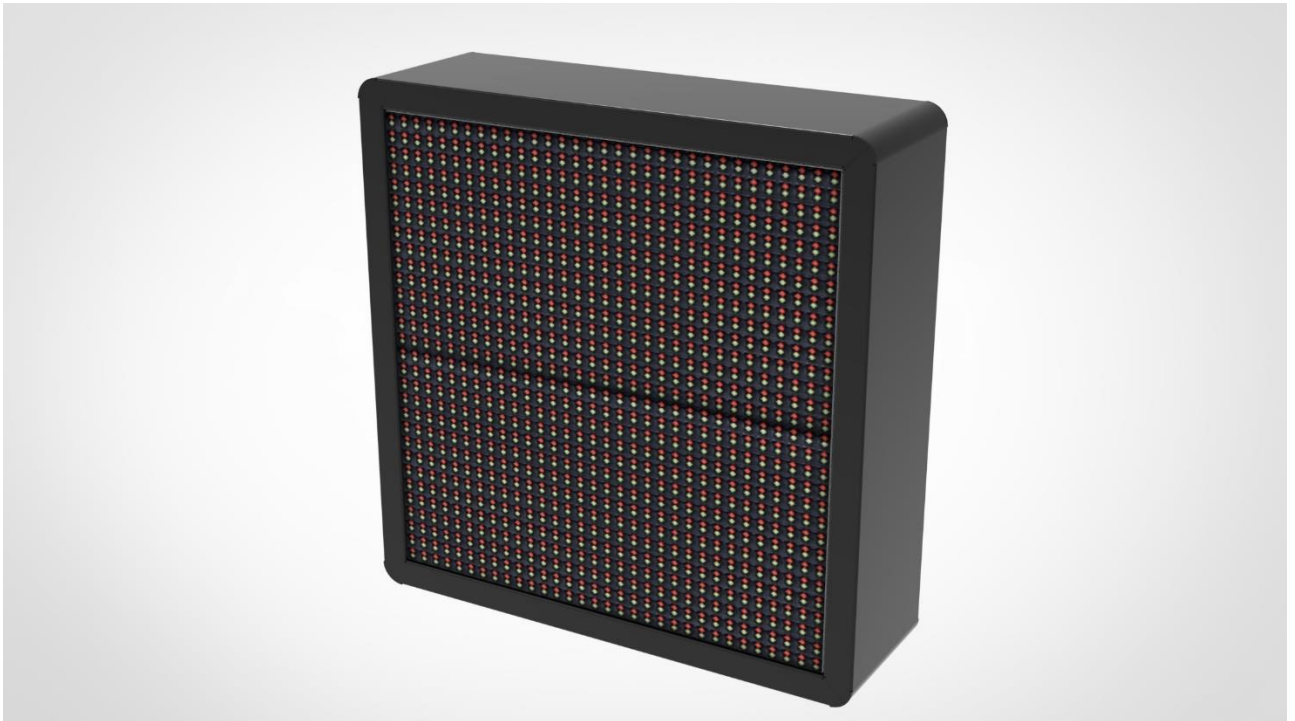
Chapter 1 Product Introduction.....	1
1.1 Brief Introduction to Product Functions	1
Chapter 2 Wiring and Installation.....	2
2.1 Wiring Instructions.....	2
2.2 Installation Instructions	3
Device Installation.....	3
Positions of Mounting Holes.....	4
Chapter 3 Quick Operation.....	4
3.1 Connecting to the Internet.....	4

Chapter 1 Product Introduction

1.1 Brief Introduction to Product Functions

The product is an outdoor guidance LED screen installed at an intersection in a parking lot, displaying the unoccupied parking spaces in the entire parking lot and their orientations. It can display standard text and digits, and the standard communication mode is RJ45. It can be used independently or in a local area network (LAN). The displayed content can be the number of unoccupied parking spaces in the entire parking lot or the number of unoccupied parking spaces in each zone. A management system is employed to learn how many parking spaces are available and display them on the outdoor guidance LED screen. Drivers can refer to the guidance LED screen to see the number of unoccupied parking spaces and the direction to the parking zones with vacant spaces.

Product Image:



	One-way Guidance LED Screen	Two-way Guidance LED Screen	Three-way Guidance LED Screen
Product Model	DS-TVL221-2-10P	DS-TVL222-2-10P	DS-TVL223-2-10P
Power Supply	100–240 V~, 50/60 Hz, MAX 0.5 A		
Downlink Communication Mode	RJ45		

Maximum Communication Distance	100 M (if a more extended communication distance is required, an auxiliary device should be used)		
Overall Dimensions	362 × 202 × 110 mm	362 × 362 × 110 mm	362 × 522 × 110 mm
Display Size	320 × 160 mm	320 × 320 mm	320 × 480 mm
Resolution	32 × 16	32 × 32	32 × 48
Displayed Colors	Red, green, yellow	Red, green, yellow	Red, green, yellow

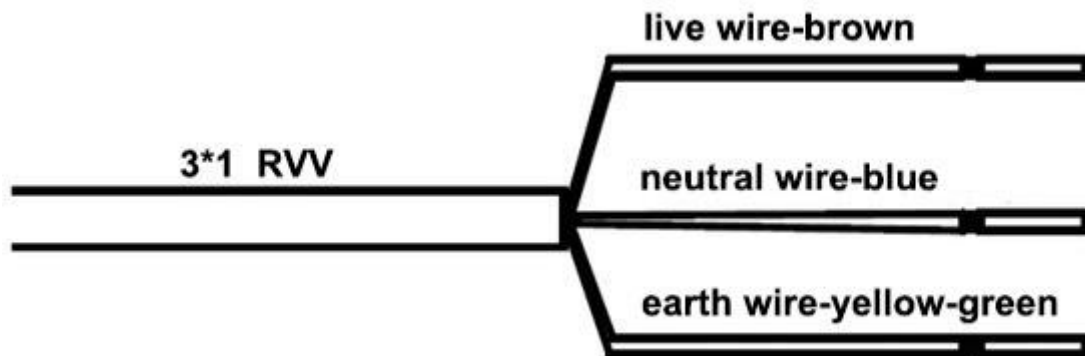
Chapter 2 Wiring and Installation

2.1 Wiring Instructions

The reserved cable is a 3-core 1.0 mm² RVV cable. The power cord is reserved inside the enclosure.

Cable interfaces: live wire — brown; neutral wire — blue; earth wire — yellow-green (as shown below).

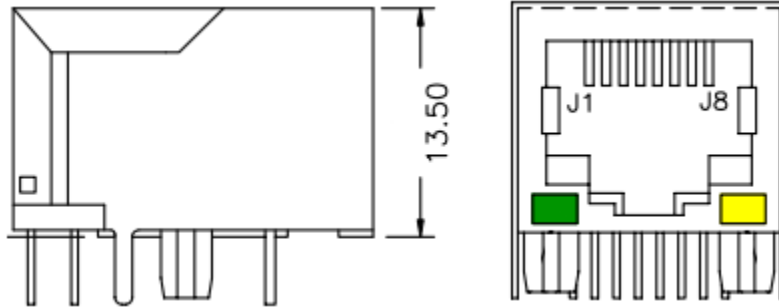
Power supply: 100–240 V~, 50/60 Hz, MAX 0.5 A



Signal interface (as shown below)

- RJ45 interface: directly connect to the control card.

RJ45



2.2 Installation Instructions

Device Installation

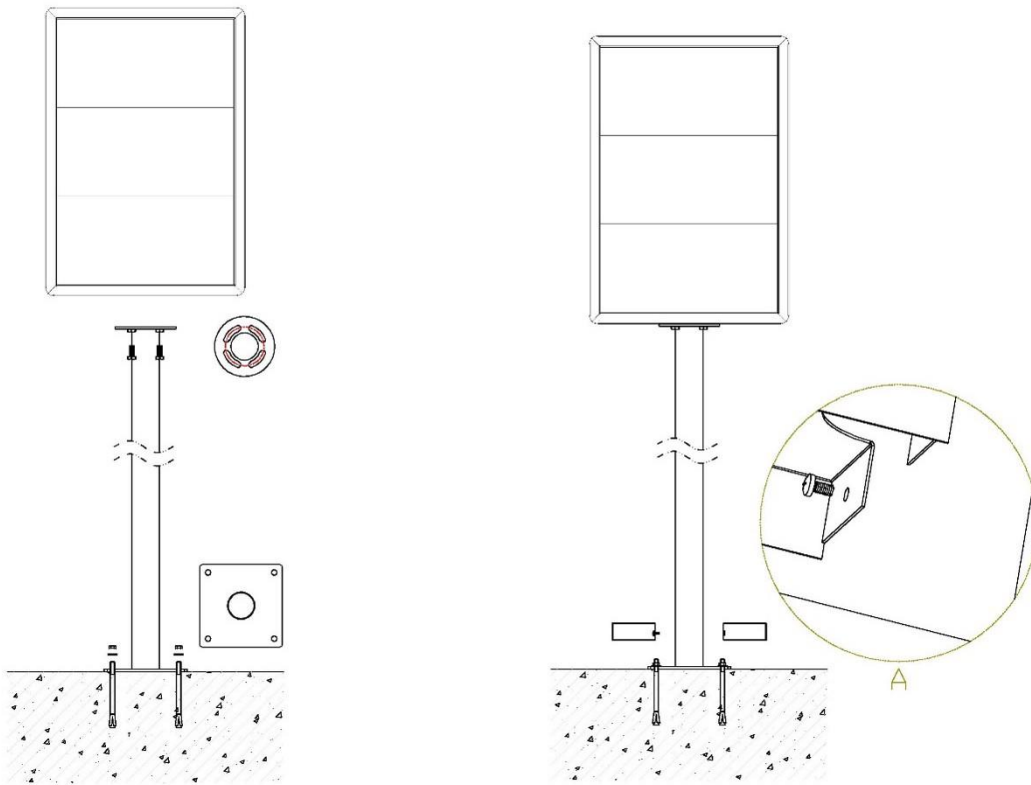
Required Tools:

- Anti-static wristband or gloves
- Hammer drill (drilling diameter: 10 mm; drilling depth: 800 mm)
- Open-end wrench

Device Installation:

Several individuals are required to work together to install this device. The installation process is as follows:

1. Connect the screen to the pole using four M8*25 bolts.
2. Drill four expansion bolt holes at the designated location (following the fixed hole position at the bottom of the pole) and hammer four expansion bolts into these holes (expansion bolt: M8*70 ×4).
3. Insert four expansion bolts into the holes at the bottom of the pole and tighten them using nuts.
4. Position the left and right decorative plates on both sides of the bottom of the pole, and secure them inside the decorative plates using screws.
5. Connect the power cord and the signal cable.



Positions of Mounting Holes

Chapter 3 Quick Operation

3.1 Connecting to the Internet

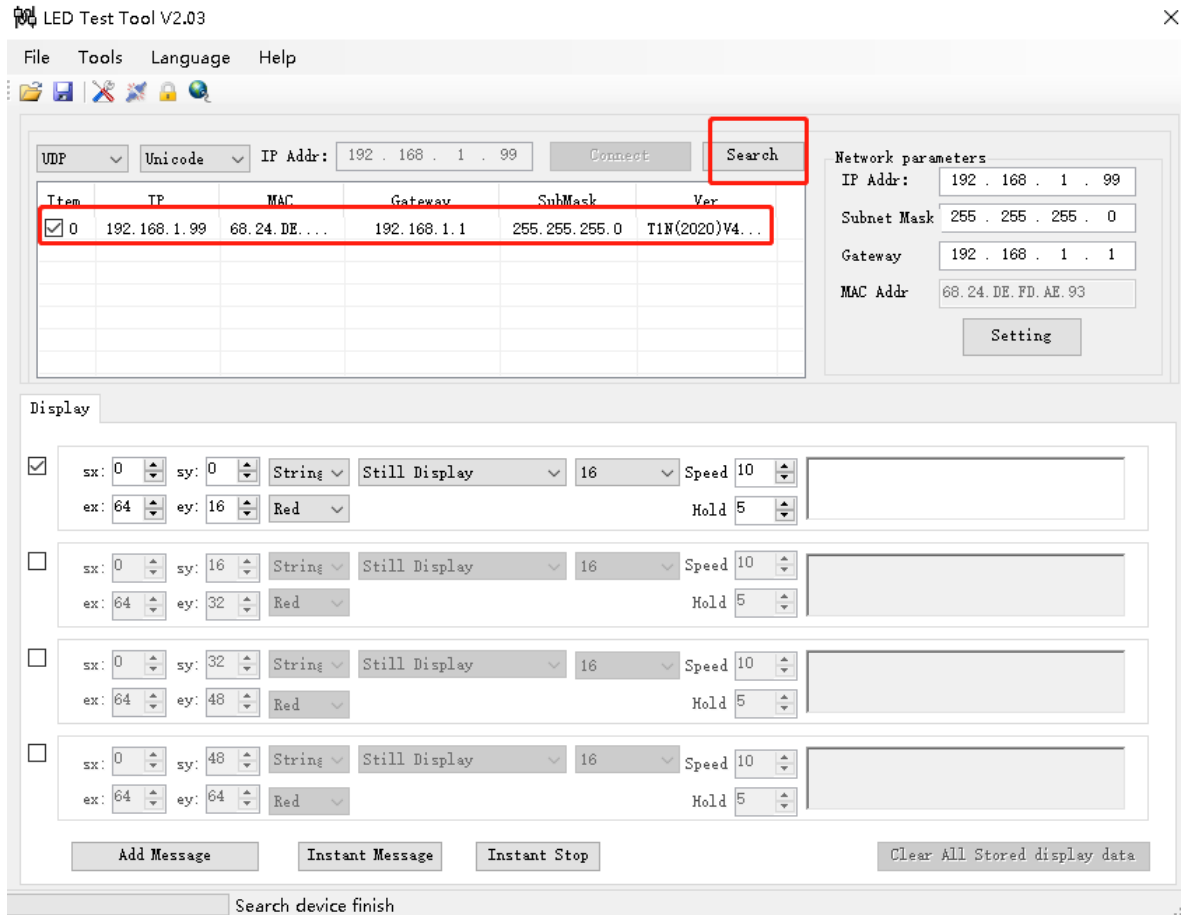
After powering on, change the IP address of the product first.

Default IP: 192.168.1.99

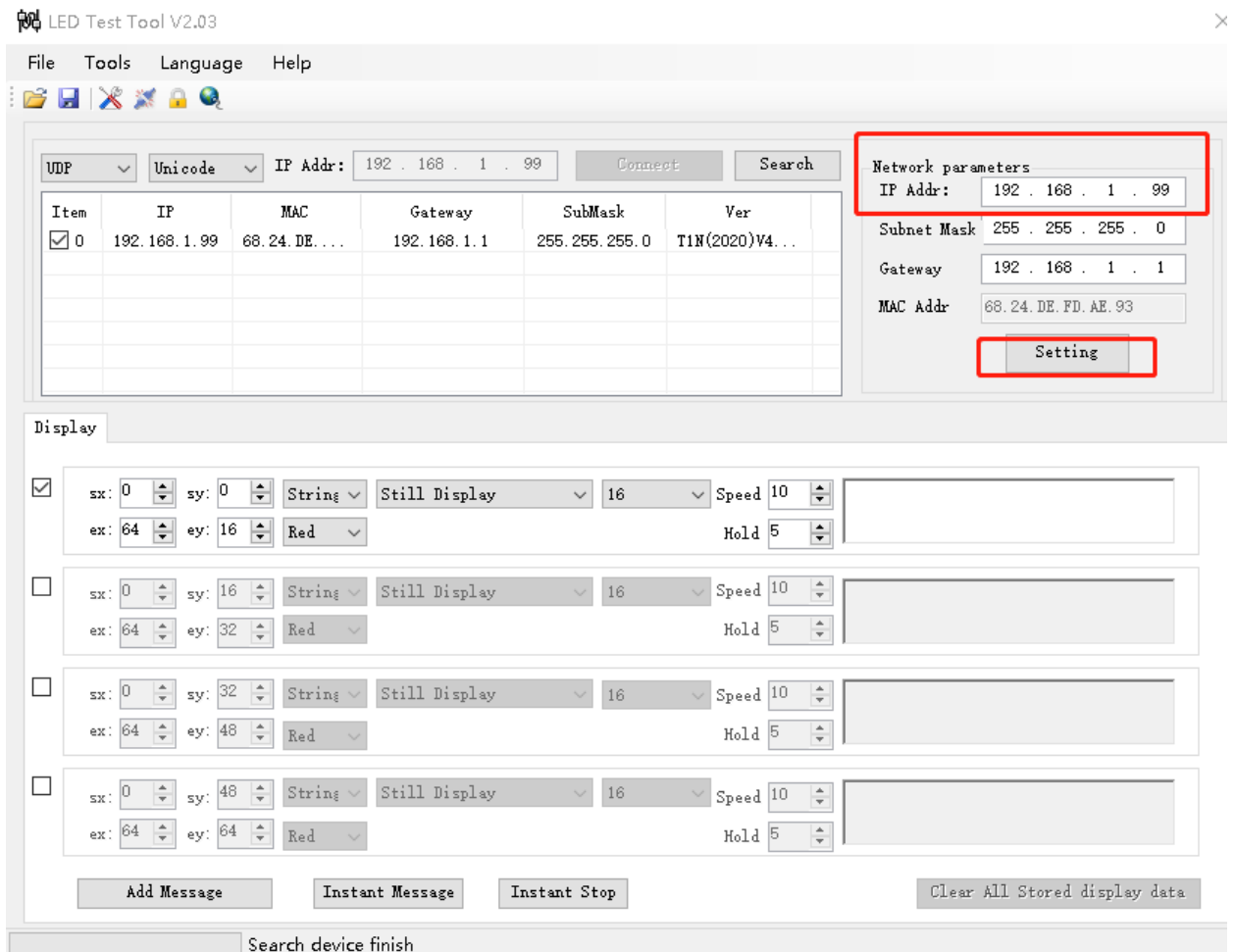
 LED Test Tools 20230426.exe

Search for the device.

Outdoor Guidance LED Screens • Quick Start Guide



Change the IP address: Enter the IP address to be changed, and click Setting to apply the changes.



The device is directly connected to the platform after the IP address is changed.

Package Contents

No.	Name	Specifications	Quantity	Remarks
1	Screen	LED screen	1	
2	Bolt	M8*25, stainless steel	4	
3	Key	Universal triangle key	1	
4	Quick Start Guide		1	



See Far, Go Further