



Test Report



Report No.: MTi230109002-06C1



Date of Issue: April 19, 2023



Client: Dowell Technology Co., Ltd

Product: Portable Power Station

Test Type: Commissioned Inspection



Shenzhen Microtest Co., Ltd.

<http://www.mtitest.com>





Instructions



1. The report shall not be partially reproduced without the written consent of the Laboratory;



2. The test results of this report are only responsible for the samples submitted;

3. This report is invalid without the seal and signature of the laboratory;



4. This report is invalid if transferred, altered or tampered with in any form without authorization;

5. Any objection to this report shall be submitted to the laboratory within 15 days from the date of receipt of the report.



TEST REPORT

Report No.:MTi230109002-06C1

Page 1 of 70

Basic Information			
Client	Dowell Technology Co., Ltd		
Client Address	East Gaolang Road,Wuxi Economic Development Zone		
Manufacturer	Dowell Technology Co., Ltd		
Manufacturer Address	East Gaolang Road,Wuxi Economic Development Zone		
Factory	Dowell Technology Co., Ltd		
Factory Address	East Gaolang Road,Wuxi Economic Development Zone		
Sample Information			
Product	Portable Power Station	Model	GK-2000
Serial Model	/	Brand/ Trademark	
Sample Number	1	Sample Description	/
Testing Information			
Sample Receive Date	May 18, 2022	Sample Source	Customer provided
Test Specification	1. With reference to RoHS Directive 2011/65/EU and its amending (EU) 2015/863 (RoHS 2.0) . 2. With reference to EU Battery Directive (2006/66/EC & 2013/56/EU).		
Date of Tests	May 18, 2022 - June 10, 2022 April 03, 2023 - April 08, 2023		
Test Address	Chemistry lab		
Test Results:	Please refer to next page(s).		
Conclusion:	1. The submitted sample(s) complied with the Lead, Cadmium, Mercury, Hexavalent Chromium, PBBs, PBDEs, DBP, BBP, DEHP, DIBP content requirement according to RoHS Directive 2011/65/EU and its amending (EU) 2015/863 (RoHS 2.0). 2. The submitted sample(s) complied with the Lead(Pb)、Cadmium(Cd)、Mercury(Hg) content in the submitted sample(s) in accordance with EU Battery Directive (2006/66/EC & 2013/56/EU).		
Compiled:	<i>Tobey Lin</i>	Reviewed:	<i>Sunshing Chen</i>
		Approved:	<i>Olivia Feng</i>

Test Method:

- 1. With reference to IEC 62321-3-1:2013, screening by XRF spectroscopy.**
- 2. Wet chemical test method.**
 - a. With reference to IEC 62321-5:2013, determination of Cadmium by ICP-OES.**
 - b. With reference to IEC 62321-5:2013, determination of Lead by ICP-OES.**
 - c. With reference to IEC 62321-4:2017, determination of Mercury by ICP-OES.**
 - d. With reference to IEC 62321-7-1:2015 & IEC 62321-7-2:2017, determination of Hexavalent chromium by Colorimetric method using UV-Vis.**
 - e. With reference to IEC 62321-6:2015, determination of PBBs and PBDEs by GC-MS.**
- 3. With reference to IEC 62321-8: 2017, determination of phthalates by GC-MS.**
- 4. With reference to IEC 62321-5:2013 and IEC 62321-4:2017, determination of Lead, Cadmium and Mercury in the battery by ICP-OES.**

TEST REPORT

Report No.:MTi230109002-06C1

Page 3 of 70

Testing Result:
1. With reference to RoHS Directive 2011/65/EU and its amending (EU) 2015/863 to test
Lead, Cadmium, Mercury, Hexavalent Chromium, PBBs, PBDEs, DBP, BBP, DEHP, DIBP

Part No.	Sample Description	Test item	XRF Result	Chemical Test (mg/kg)	Conclusion
1	Silvery metal	Pb	BL	/	Pass
		Cd	BL	/	
		Hg	BL	/	
		Cr(Cr(VI))	BL	/	
		Br(PBBs&PBDEs)	--	--	
		Phthalate(DBP\BBP \DEHP\DIBP)	--	--	
2	Black plastic shell	Pb	BL	/	Pass
		Cd	BL	/	
		Hg	BL	/	
		Cr(Cr(VI))	BL	/	
		Br(PBBs&PBDEs)	BL	/	
		Phthalate(DBP\BBP \DEHP\DIBP)	--	N.D.	
3	Black plastic	Pb	BL	/	Pass
		Cd	BL	/	
		Hg	BL	/	
		Cr(Cr(VI))	BL	/	
		Br(PBBs&PBDEs)	BL	/	
		Phthalate(DBP\BBP \DEHP\DIBP)	--	N.D.	
4	White plastic	Pb	BL	/	Pass
		Cd	BL	/	
		Hg	BL	/	
		Cr(Cr(VI))	BL	/	
		Br(PBBs&PBDEs)	BL	/	
		Phthalate(DBP\BBP \DEHP\DIBP)	--	N.D.	

TEST REPORT

Report No.:MTi230109002-06C1

Page 4 of 70

Part No.	Sample Description	Test item	XRF Result	Chemical Test (mg/kg)	Conclusion
5	Gray plastic	Pb	BL	/	Pass
		Cd	BL	/	
		Hg	BL	/	
		Cr(Cr(VI))	BL	/	
		Br(PBBs&PBDEs)	X	N.D.	
		Phthalate(DBP\BBP \DEHP\DIBP)	--	N.D.	
6	White plastic	Pb	BL	/	Pass
		Cd	BL	/	
		Hg	BL	/	
		Cr(Cr(VI))	BL	/	
		Br(PBBs&PBDEs)	BL	/	
		Phthalate(DBP\BBP \DEHP\DIBP)	--	N.D.	
7	Silvery metal	Pb	BL	/	Pass
		Cd	BL	/	
		Hg	BL	/	
		Cr(Cr(VI))	BL	/	
		Br(PBBs&PBDEs)	--	--	
		Phthalate(DBP\BBP \DEHP\DIBP)	--	--	
8	Black line skin	Pb	BL	/	Pass
		Cd	BL	/	
		Hg	BL	/	
		Cr(Cr(VI))	BL	/	
		Br(PBBs&PBDEs)	BL	/	
		Phthalate(DBP\BBP \DEHP\DIBP)	--	N.D.	
9	Red line skin	Pb	BL	/	Pass
		Cd	BL	/	
		Hg	BL	/	
		Cr(Cr(VI))	BL	/	
		Br(PBBs&PBDEs)	BL	/	
		Phthalate(DBP\BBP \DEHP\DIBP)	--	N.D.	

TEST REPORT

Report No.:MTi230109002-06C1

Page 5 of 70

Part No.	Sample Description	Test item	XRF Result	Chemical Test (mg/kg)	Conclusion
10	Silvery metal line	Pb	BL	/	Pass
		Cd	BL	/	
		Hg	BL	/	
		Cr(Cr(VI))	BL	/	
		Br(PBBs&PBDEs)	--	--	
		Phthalate(DBP\BBP \DEHP\DIBP)	--	--	
11	Yellow label	Pb	BL	/	Pass
		Cd	BL	/	
		Hg	BL	/	
		Cr(Cr(VI))	BL	/	
		Br(PBBs&PBDEs)	BL	/	
		Phthalate(DBP\BBP \DEHP\DIBP)	--	N.D.	
12	Black plastic	Pb	BL	/	Pass
		Cd	BL	/	
		Hg	BL	/	
		Cr(Cr(VI))	BL	/	
		Br(PBBs&PBDEs)	X	N.D.	
		Phthalate(DBP\BBP \DEHP\DIBP)	--	N.D.	
13	Black plastic	Pb	BL	/	Pass
		Cd	BL	/	
		Hg	BL	/	
		Cr(Cr(VI))	BL	/	
		Br(PBBs&PBDEs)	X	N.D.	
		Phthalate(DBP\BBP \DEHP\DIBP)	--	N.D.	
14	Black magnet	Pb	BL	/	Pass
		Cd	BL	/	
		Hg	BL	/	
		Cr(Cr(VI))	BL	/	
		Br(PBBs&PBDEs)	--	--	
		Phthalate(DBP\BBP \DEHP\DIBP)	--	--	

TEST REPORT

Report No.:MTi230109002-06C1

Page 6 of 70

Part No.	Sample Description	Test item	XRF Result	Chemical Test (mg/kg)	Conclusion
15	Silvery metal	Pb	BL	/	Pass
		Cd	BL	/	
		Hg	BL	/	
		Cr(Cr(VI))	BL	/	
		Br(PBBs&PBDEs)	--	--	
		Phthalate(DBP\BBP \DEHP\DIBP)	--	--	
16	Green PCB	Pb	BL	/	Pass
		Cd	BL	/	
		Hg	BL	/	
		Cr(Cr(VI))	BL	/	
		Br(PBBs&PBDEs)	X	N.D.	
		Phthalate(DBP\BBP \DEHP\DIBP)	--	N.D.	
17	Solder	Pb	BL	/	Pass
		Cd	BL	/	
		Hg	BL	/	
		Cr(Cr(VI))	BL	/	
		Br(PBBs&PBDEs)	--	--	
		Phthalate(DBP\BBP \DEHP\DIBP)	--	--	
18	Silvery metal spring	Pb	BL	/	Pass
		Cd	BL	/	
		Hg	BL	/	
		Cr(Cr(VI))	X	N.D.	
		Br(PBBs&PBDEs)	--	--	
		Phthalate(DBP\BBP \DEHP\DIBP)	--	--	
19	White plastic	Pb	BL	/	Pass
		Cd	BL	/	
		Hg	BL	/	
		Cr(Cr(VI))	BL	/	
		Br(PBBs&PBDEs)	BL	/	
		Phthalate(DBP\BBP \DEHP\DIBP)	--	N.D.	

TEST REPORT

Report No.:MTi230109002-06C1

Page 7 of 70

Part No.	Sample Description	Test item	XRF Result	Chemical Test (mg/kg)	Conclusion
20	Silvery metal	Pb	BL	/	Pass
		Cd	BL	/	
		Hg	BL	/	
		Cr(Cr(VI))	X	N.D.	
		Br(PBBs&PBDEs)	--	--	
		Phthalate(DBP\BBP \DEHP\DIBP)	--	--	
21	Bearings	Pb	BL	/	Pass
		Cd	BL	/	
		Hg	BL	/	
		Cr(Cr(VI))	X	N.D.	
		Br(PBBs&PBDEs)	--	--	
		Phthalate(DBP\BBP \DEHP\DIBP)	--	--	
22	Silvery metal	Pb	BL	/	Pass
		Cd	BL	/	
		Hg	BL	/	
		Cr(Cr(VI))	X	N.D.	
		Br(PBBs&PBDEs)	--	--	
		Phthalate(DBP\BBP \DEHP\DIBP)	--	--	
23	Copper metal line	Pb	BL	/	Pass
		Cd	BL	/	
		Hg	BL	/	
		Cr(Cr(VI))	BL	/	
		Br(PBBs&PBDEs)	--	--	
		Phthalate(DBP\BBP \DEHP\DIBP)	--	--	
24	Black plastic	Pb	BL	/	Pass
		Cd	BL	/	
		Hg	BL	/	
		Cr(Cr(VI))	BL	/	
		Br(PBBs&PBDEs)	BL	/	
		Phthalate(DBP\BBP \DEHP\DIBP)	--	N.D.	

TEST REPORT

Report No.:MTi230109002-06C1

Page 8 of 70

Part No.	Sample Description	Test item	XRF Result	Chemical Test (mg/kg)	Conclusion
25	Golden metal	Pb*	OL	31484*	Exempt
		Cd	BL	/	
		Hg	BL	/	
		Cr(Cr(VI))	BL	/	
		Br(PBBs&PBDEs)	--	--	
		Phthalate(DBP\BBP \DEHP\DIBP)	--	--	
26	Black metal	Pb	BL	/	Pass
		Cd	BL	/	
		Hg	BL	/	
		Cr(Cr(VI))	BL	/	
		Br(PBBs&PBDEs)	--	--	
		Phthalate(DBP\BBP \DEHP\DIBP)	--	--	
27	Silvery metal	Pb	BL	/	Pass
		Cd	BL	/	
		Hg	BL	/	
		Cr(Cr(VI))	BL	/	
		Br(PBBs&PBDEs)	--	--	
		Phthalate(DBP\BBP \DEHP\DIBP)	--	--	
28	Silvery metal	Pb	BL	/	Pass
		Cd	BL	/	
		Hg	BL	/	
		Cr(Cr(VI))	BL	/	
		Br(PBBs&PBDEs)	--	--	
		Phthalate(DBP\BBP \DEHP\DIBP)	--	--	
29	White plastic	Pb	BL	/	Pass
		Cd	BL	/	
		Hg	BL	/	
		Cr(Cr(VI))	BL	/	
		Br(PBBs&PBDEs)	X	N.D.	
		Phthalate(DBP\BBP \DEHP\DIBP)	--	N.D.	

TEST REPORT

Report No.:MTi230109002-06C1

Page 9 of 70

Part No.	Sample Description	Test item	XRF Result	Chemical Test (mg/kg)	Conclusion
30	Black plastic	Pb	BL	/	Pass
		Cd	BL	/	
		Hg	BL	/	
		Cr(Cr(VI))	BL	/	
		Br(PBBs&PBDEs)	BL	/	
		Phthalate(DBP\BBP \DEHP\DIBP)	--	N.D.	
31	Silvery metal	Pb	BL	/	Pass
		Cd	BL	/	
		Hg	BL	/	
		Cr(Cr(VI))	BL	/	
		Br(PBBs&PBDEs)	--	--	
		Phthalate(DBP\BBP \DEHP\DIBP)	--	--	
32	Silvery metal spring	Pb	BL	/	Pass
		Cd	BL	/	
		Hg	BL	/	
		Cr(Cr(VI))	BL	/	
		Br(PBBs&PBDEs)	--	--	
		Phthalate(DBP\BBP \DEHP\DIBP)	--	--	
33	Silvery metal	Pb	BL	/	Pass
		Cd	BL	/	
		Hg	BL	/	
		Cr(Cr(VI))	BL	/	
		Br(PBBs&PBDEs)	--	--	
		Phthalate(DBP\BBP \DEHP\DIBP)	--	--	
34	Silvery metal	Pb	BL	/	Pass
		Cd	BL	/	
		Hg	BL	/	
		Cr(Cr(VI))	X	N.D.	
		Br(PBBs&PBDEs)	--	--	
		Phthalate(DBP\BBP \DEHP\DIBP)	--	--	

TEST REPORT

Report No.:MTi230109002-06C1

Page 10 of 70

Part No.	Sample Description	Test item	XRF Result	Chemical Test (mg/kg)	Conclusion
35	Black plastic	Pb	BL	/	Pass
		Cd	BL	/	
		Hg	BL	/	
		Cr(Cr(VI))	BL	/	
		Br(PBBs&PBDEs)	BL	/	
		Phthalate(DBP\BBP \DEHP\DIBP)	--	N.D.	
36	Copper metal	Pb	BL	/	Pass
		Cd	BL	/	
		Hg	BL	/	
		Cr(Cr(VI))	X	N.D.	
		Br(PBBs&PBDEs)	--	--	
		Phthalate(DBP\BBP \DEHP\DIBP)	--	--	
37	Silvery metal	Pb	BL	/	Pass
		Cd	BL	/	
		Hg	BL	/	
		Cr(Cr(VI))	BL	/	
		Br(PBBs&PBDEs)	--	--	
		Phthalate(DBP\BBP \DEHP\DIBP)	--	--	
38	Silvery metal screw	Pb	BL	/	Pass
		Cd	BL	/	
		Hg	BL	/	
		Cr(Cr(VI))	BL	/	
		Br(PBBs&PBDEs)	--	--	
		Phthalate(DBP\BBP \DEHP\DIBP)	--	--	
39	Red plastic	Pb	BL	/	Pass
		Cd	BL	/	
		Hg	BL	/	
		Cr(Cr(VI))	BL	/	
		Br(PBBs&PBDEs)	X	N.D.	
		Phthalate(DBP\BBP \DEHP\DIBP)	--	N.D.	

TEST REPORT

Report No.:MTi230109002-06C1

Page 11 of 70

Part No.	Sample Description	Test item	XRF Result	Chemical Test (mg/kg)	Conclusion
40	Black plastic	Pb	BL	/	Pass
		Cd	BL	/	
		Hg	BL	/	
		Cr(Cr(VI))	BL	/	
		Br(PBBs&PBDEs)	BL	/	
		Phthalate(DBP\BBP \DEHP\DIBP)	--	N.D.	
41	Silvery metal	Pb	BL	/	Pass
		Cd	BL	/	
		Hg	BL	/	
		Cr(Cr(VI))	BL	/	
		Br(PBBs&PBDEs)	--	--	
		Phthalate(DBP\BBP \DEHP\DIBP)	--	--	
42	Silvery metal	Pb	BL	/	Pass
		Cd	BL	/	
		Hg	BL	/	
		Cr(Cr(VI))	BL	/	
		Br(PBBs&PBDEs)	--	--	
		Phthalate(DBP\BBP \DEHP\DIBP)	--	--	
43	Black line skin	Pb	BL	/	Pass
		Cd	BL	/	
		Hg	BL	/	
		Cr(Cr(VI))	BL	/	
		Br(PBBs&PBDEs)	BL	/	
		Phthalate(DBP\BBP \DEHP\DIBP)	--	N.D.	
44	Red line skin	Pb	BL	/	Pass
		Cd	BL	/	
		Hg	BL	/	
		Cr(Cr(VI))	BL	/	
		Br(PBBs&PBDEs)	BL	/	
		Phthalate(DBP\BBP \DEHP\DIBP)	--	N.D.	

TEST REPORT

Report No.:MTi230109002-06C1

Page 12 of 70

Part No.	Sample Description	Test item	XRF Result	Chemical Test (mg/kg)	Conclusion
45	Silvery metal line	Pb	BL	/	Pass
		Cd	BL	/	
		Hg	BL	/	
		Cr(Cr(VI))	BL	/	
		Br(PBBs&PBDEs)	--	--	
		Phthalate(DBP\BBP \DEHP\DIBP)	--	--	
46	Yellow plastic	Pb	BL	/	Pass
		Cd	BL	/	
		Hg	BL	/	
		Cr(Cr(VI))	BL	/	
		Br(PBBs&PBDEs)	BL	/	
		Phthalate(DBP\BBP \DEHP\DIBP)	--	N.D.	
47	Golden metal	Pb*	OL	15190*	Exempt
		Cd	BL	/	
		Hg	BL	/	
		Cr(Cr(VI))	BL	/	
		Br(PBBs&PBDEs)	--	--	
		Phthalate(DBP\BBP \DEHP\DIBP)	--	--	
48	Black plastic	Pb	BL	/	Pass
		Cd	BL	/	
		Hg	BL	/	
		Cr(Cr(VI))	BL	/	
		Br(PBBs&PBDEs)	BL	/	
		Phthalate(DBP\BBP \DEHP\DIBP)	--	N.D.	
49	Transparency plastic	Pb	BL	/	Pass
		Cd	BL	/	
		Hg	BL	/	
		Cr(Cr(VI))	BL	/	
		Br(PBBs&PBDEs)	BL	/	
		Phthalate(DBP\BBP \DEHP\DIBP)	--	N.D.	

TEST REPORT

Report No.:MTi230109002-06C1

Page 13 of 70

Part No.	Sample Description	Test item	XRF Result	Chemical Test (mg/kg)	Conclusion
50	Liquid Crystal Display	Pb	BL	/	Pass
		Cd	BL	/	
		Hg	BL	/	
		Cr(Cr(VI))	BL	/	
		Br(PBBs&PBDEs)	BL	/	
		Phthalate(DBP\BBP \DEHP\DIBP)	--	N.D.	
51	Flexible Flat Cable	Pb	BL	/	Pass
		Cd	BL	/	
		Hg	BL	/	
		Cr(Cr(VI))	BL	/	
		Br(PBBs&PBDEs)	BL	/	
		Phthalate(DBP\BBP \DEHP\DIBP)	--	N.D.	
52	White plastic	Pb	BL	/	Pass
		Cd	BL	/	
		Hg	BL	/	
		Cr(Cr(VI))	BL	/	
		Br(PBBs&PBDEs)	BL	/	
		Phthalate(DBP\BBP \DEHP\DIBP)	--	N.D.	
53	Transparency plastic	Pb	BL	/	Pass
		Cd	BL	/	
		Hg	BL	/	
		Cr(Cr(VI))	BL	/	
		Br(PBBs&PBDEs)	BL	/	
		Phthalate(DBP\BBP \DEHP\DIBP)	--	N.D.	
54	LED	Pb	BL	/	Pass
		Cd	BL	/	
		Hg	BL	/	
		Cr(Cr(VI))	BL	/	
		Br(PBBs&PBDEs)	BL	/	
		Phthalate(DBP\BBP \DEHP\DIBP)	--	N.D.	

TEST REPORT

Report No.:MTi230109002-06C1

Page 14 of 70

Part No.	Sample Description	Test item	XRF Result	Chemical Test (mg/kg)	Conclusion
55	White PCB	Pb	BL	/	Pass
		Cd	BL	/	
		Hg	BL	/	
		Cr(Cr(VI))	BL	/	
		Br(PBBs&PBDEs)	BL	/	
		Phthalate(DBP\BBP \DEHP\DIBP)	--	N.D.	
56	Black plastic	Pb	BL	/	Pass
		Cd	BL	/	
		Hg	BL	/	
		Cr(Cr(VI))	BL	/	
		Br(PBBs&PBDEs)	BL	/	
		Phthalate(DBP\BBP \DEHP\DIBP)	--	N.D.	
57	Silvery metal	Pb*	OL	18560*	Exempt
		Cd	BL	/	
		Hg	BL	/	
		Cr(Cr(VI))	BL	/	
		Br(PBBs&PBDEs)	--	--	
		Phthalate(DBP\BBP \DEHP\DIBP)	--	--	
58	Silvery metal	Pb	BL	/	Pass
		Cd	BL	/	
		Hg	BL	/	
		Cr(Cr(VI))	X	N.D.	
		Br(PBBs&PBDEs)	--	--	
		Phthalate(DBP\BBP \DEHP\DIBP)	--	--	
59	Silvery metal	Pb*	OL	29650*	Exempt
		Cd	BL	/	
		Hg	BL	/	
		Cr(Cr(VI))	BL	/	
		Br(PBBs&PBDEs)	--	--	
		Phthalate(DBP\BBP \DEHP\DIBP)	--	--	

TEST REPORT

Report No.:MTi230109002-06C1

Page 15 of 70

Part No.	Sample Description	Test item	XRF Result	Chemical Test (mg/kg)	Conclusion
60	Black plastic	Pb	BL	/	Pass
		Cd	BL	/	
		Hg	BL	/	
		Cr(Cr(VI))	BL	/	
		Br(PBBs&PBDEs)	BL	/	
		Phthalate(DBP\BBP \DEHP\DIBP)	--	N.D.	
61	Black iron powder core	Pb	BL	/	Pass
		Cd	BL	/	
		Hg	BL	/	
		Cr(Cr(VI))	BL	/	
		Br(PBBs&PBDEs)	--	--	
		Phthalate(DBP\BBP \DEHP\DIBP)	--	--	
62	Copper metal line	Pb	BL	/	Pass
		Cd	BL	/	
		Hg	BL	/	
		Cr(Cr(VI))	BL	/	
		Br(PBBs&PBDEs)	--	--	
		Phthalate(DBP\BBP \DEHP\DIBP)	--	--	
63	Silvery metal	Pb	BL	/	Pass
		Cd	BL	/	
		Hg	BL	/	
		Cr(Cr(VI))	BL	/	
		Br(PBBs&PBDEs)	--	--	
		Phthalate(DBP\BBP \DEHP\DIBP)	--	--	
64	Orange plastic	Pb	BL	/	Pass
		Cd	BL	/	
		Hg	BL	/	
		Cr(Cr(VI))	BL	/	
		Br(PBBs&PBDEs)	BL	/	
		Phthalate(DBP\BBP \DEHP\DIBP)	--	N.D.	

TEST REPORT

Report No.:MTi230109002-06C1

Page 16 of 70

Part No.	Sample Description	Test item	XRF Result	Chemical Test (mg/kg)	Conclusion
65	Silvery metal	Pb	BL	/	Pass
		Cd	BL	/	
		Hg	BL	/	
		Cr(Cr(VI))	BL	/	
		Br(PBBs&PBDEs)	--	--	
		Phthalate(DBP\BBP \DEHP\DIBP)	--	--	
66	Silvery metal	Pb	BL	/	Pass
		Cd	BL	/	
		Hg	BL	/	
		Cr(Cr(VI))	X	N.D.	
		Br(PBBs&PBDEs)	--	--	
		Phthalate(DBP\BBP \DEHP\DIBP)	--	--	
67	Black plastic	Pb	BL	/	Pass
		Cd	BL	/	
		Hg	BL	/	
		Cr(Cr(VI))	BL	/	
		Br(PBBs&PBDEs)	BL	/	
		Phthalate(DBP\BBP \DEHP\DIBP)	--	N.D.	
68	Silvery metal	Pb	BL	/	Pass
		Cd	BL	/	
		Hg	BL	/	
		Cr(Cr(VI))	X	N.D.	
		Br(PBBs&PBDEs)	--	--	
		Phthalate(DBP\BBP \DEHP\DIBP)	--	--	
69	Silvery metal	Pb	BL	/	Pass
		Cd	BL	/	
		Hg	BL	/	
		Cr(Cr(VI))	BL	/	
		Br(PBBs&PBDEs)	--	--	
		Phthalate(DBP\BBP \DEHP\DIBP)	--	--	

TEST REPORT

Report No.:MTi230109002-06C1

Page 17 of 70

Part No.	Sample Description	Test item	XRF Result	Chemical Test (mg/kg)	Conclusion
70	Green plastic	Pb	BL	/	Pass
		Cd	BL	/	
		Hg	BL	/	
		Cr(Cr(VI))	BL	/	
		Br(PBBs&PBDEs)	BL	/	
		Phthalate(DBP\BBP \DEHP\DIBP)	--	N.D.	
71	Black plastic	Pb	BL	/	Pass
		Cd	BL	/	
		Hg	BL	/	
		Cr(Cr(VI))	BL	/	
		Br(PBBs&PBDEs)	BL	/	
		Phthalate(DBP\BBP \DEHP\DIBP)	--	N.D.	
72	Silvery metal	Pb	BL	/	Pass
		Cd	BL	/	
		Hg	BL	/	
		Cr(Cr(VI))	BL	/	
		Br(PBBs&PBDEs)	--	--	
		Phthalate(DBP\BBP \DEHP\DIBP)	--	--	
73	Silvery metal	Pb	BL	/	Pass
		Cd	BL	/	
		Hg	BL	/	
		Cr(Cr(VI))	BL	/	
		Br(PBBs&PBDEs)	--	--	
		Phthalate(DBP\BBP \DEHP\DIBP)	--	--	
74	Pale yellow paper	Pb	BL	/	Pass
		Cd	BL	/	
		Hg	BL	/	
		Cr(Cr(VI))	BL	/	
		Br(PBBs&PBDEs)	BL	/	
		Phthalate(DBP\BBP \DEHP\DIBP)	--	N.D.	

TEST REPORT

Report No.:MTi230109002-06C1

Page 18 of 70

Part No.	Sample Description	Test item	XRF Result	Chemical Test (mg/kg)	Conclusion
75	Gray metal	Pb	BL	/	Pass
		Cd	BL	/	
		Hg	BL	/	
		Cr(Cr(VI))	BL	/	
		Br(PBBs&PBDEs)	--	--	
		Phthalate(DBP\BBP \DEHP\DIBP)	--	--	
76	Gray metal	Pb	BL	/	Pass
		Cd	BL	/	
		Hg	BL	/	
		Cr(Cr(VI))	BL	/	
		Br(PBBs&PBDEs)	--	--	
		Phthalate(DBP\BBP \DEHP\DIBP)	--	--	
77	Black plastic	Pb	BL	/	Pass
		Cd	BL	/	
		Hg	BL	/	
		Cr(Cr(VI))	BL	/	
		Br(PBBs&PBDEs)	BL	/	
		Phthalate(DBP\BBP \DEHP\DIBP)	--	N.D.	
78	Silvery metal	Pb	BL	/	Pass
		Cd	BL	/	
		Hg	BL	/	
		Cr(Cr(VI))	BL	/	
		Br(PBBs&PBDEs)	--	--	
		Phthalate(DBP\BBP \DEHP\DIBP)	--	--	
79	Silvery metal	Pb	BL	/	Pass
		Cd	BL	/	
		Hg	BL	/	
		Cr(Cr(VI))	BL	/	
		Br(PBBs&PBDEs)	--	--	
		Phthalate(DBP\BBP \DEHP\DIBP)	--	--	

TEST REPORT

Report No.:MTi230109002-06C1

Page 19 of 70

Part No.	Sample Description	Test item	XRF Result	Chemical Test (mg/kg)	Conclusion
80	Silvery metal	Pb	BL	/	Pass
		Cd	BL	/	
		Hg	BL	/	
		Cr(Cr(VI))	X	N.D.	
		Br(PBBs&PBDEs)	--	--	
		Phthalate(DBP\BBP \DEHP\DIBP)	--	--	
81	Black plastic	Pb	BL	/	Pass
		Cd	BL	/	
		Hg	BL	/	
		Cr(Cr(VI))	BL	/	
		Br(PBBs&PBDEs)	BL	/	
		Phthalate(DBP\BBP \DEHP\DIBP)	--	N.D.	
82	LED	Pb	BL	/	Pass
		Cd	BL	/	
		Hg	BL	/	
		Cr(Cr(VI))	BL	/	
		Br(PBBs&PBDEs)	BL	/	
		Phthalate(DBP\BBP \DEHP\DIBP)	--	N.D.	
83	Buzzer	Pb	BL	/	Pass
		Cd	BL	/	
		Hg	BL	/	
		Cr(Cr(VI))	BL	/	
		Br(PBBs&PBDEs)	BL	/	
		Phthalate(DBP\BBP \DEHP\DIBP)	--	N.D.	
84	Solder	Pb	BL	/	Pass
		Cd	BL	/	
		Hg	BL	/	
		Cr(Cr(VI))	BL	/	
		Br(PBBs&PBDEs)	--	--	
		Phthalate(DBP\BBP \DEHP\DIBP)	--	--	

TEST REPORT

Report No.:MTi230109002-06C1

Page 20 of 70

Part No.	Sample Description	Test item	XRF Result	Chemical Test (mg/kg)	Conclusion
85	Green PCB	Pb	BL	/	Pass
		Cd	BL	/	
		Hg	BL	/	
		Cr(Cr(VI))	BL	/	
		Br(PBBs&PBDEs)	BL	/	
		Phthalate(DBP\BBP \DEHP\DIBP)	--	N.D.	
86	Black IC	Pb	BL	/	Pass
		Cd	BL	/	
		Hg	BL	/	
		Cr(Cr(VI))	BL	/	
		Br(PBBs&PBDEs)	BL	/	
		Phthalate(DBP\BBP \DEHP\DIBP)	--	N.D.	
87	Resistance	Pb	BL	/	Pass
		Cd	BL	/	
		Hg	BL	/	
		Cr(Cr(VI))	BL	/	
		Br(PBBs&PBDEs)	BL	/	
		Phthalate(DBP\BBP \DEHP\DIBP)	--	N.D.	
88	Black IC	Pb	BL	/	Pass
		Cd	BL	/	
		Hg	BL	/	
		Cr(Cr(VI))	BL	/	
		Br(PBBs&PBDEs)	BL	/	
		Phthalate(DBP\BBP \DEHP\DIBP)	--	N.D.	
89	Black IC	Pb	BL	/	Pass
		Cd	BL	/	
		Hg	BL	/	
		Cr(Cr(VI))	BL	/	
		Br(PBBs&PBDEs)	BL	/	
		Phthalate(DBP\BBP \DEHP\DIBP)	--	N.D.	

TEST REPORT

Report No.:MTi230109002-06C1

Page 21 of 70

Part No.	Sample Description	Test item	XRF Result	Chemical Test (mg/kg)	Conclusion
90	Black IC	Pb	BL	/	Pass
		Cd	BL	/	
		Hg	BL	/	
		Cr(Cr(VI))	BL	/	
		Br(PBBs&PBDEs)	BL	/	
		Phthalate(DBP\BBP \DEHP\DIBP)	--	N.D.	
91	Diode	Pb	BL	/	Pass
		Cd	BL	/	
		Hg	BL	/	
		Cr(Cr(VI))	BL	/	
		Br(PBBs&PBDEs)	BL	/	
		Phthalate(DBP\BBP \DEHP\DIBP)	--	N.D.	
92	Inductor	Pb	BL	/	Pass
		Cd	BL	/	
		Hg	BL	/	
		Cr(Cr(VI))	BL	/	
		Br(PBBs&PBDEs)	BL	/	
		Phthalate(DBP\BBP \DEHP\DIBP)	--	N.D.	
93	Black IC	Pb	BL	/	Pass
		Cd	BL	/	
		Hg	BL	/	
		Cr(Cr(VI))	BL	/	
		Br(PBBs&PBDEs)	BL	/	
		Phthalate(DBP\BBP \DEHP\DIBP)	--	N.D.	
94	Black IC	Pb	BL	/	Pass
		Cd	BL	/	
		Hg	BL	/	
		Cr(Cr(VI))	BL	/	
		Br(PBBs&PBDEs)	BL	/	
		Phthalate(DBP\BBP \DEHP\DIBP)	--	N.D.	

TEST REPORT

Report No.:MTi230109002-06C1

Page 22 of 70

Part No.	Sample Description	Test item	XRF Result	Chemical Test (mg/kg)	Conclusion
95	Black IC	Pb	BL	/	Pass
		Cd	BL	/	
		Hg	BL	/	
		Cr(Cr(VI))	BL	/	
		Br(PBBs&PBDEs)	BL	/	
		Phthalate(DBP\BBP \DEHP\DIBP)	--	N.D.	
96	Black IC	Pb	BL	/	Pass
		Cd	BL	/	
		Hg	BL	/	
		Cr(Cr(VI))	BL	/	
		Br(PBBs&PBDEs)	BL	/	
		Phthalate(DBP\BBP \DEHP\DIBP)	--	N.D.	
97	Yellow capacitance	Pb	BL	/	Pass
		Cd	BL	/	
		Hg	BL	/	
		Cr(Cr(VI))	BL	/	
		Br(PBBs&PBDEs)	BL	/	
		Phthalate(DBP\BBP \DEHP\DIBP)	--	N.D.	
98	Gray capacitance	Pb	BL	/	Pass
		Cd	BL	/	
		Hg	BL	/	
		Cr(Cr(VI))	BL	/	
		Br(PBBs&PBDEs)	BL	/	
		Phthalate(DBP\BBP \DEHP\DIBP)	--	N.D.	
99	Black IC	Pb	BL	/	Pass
		Cd	BL	/	
		Hg	BL	/	
		Cr(Cr(VI))	BL	/	
		Br(PBBs&PBDEs)	BL	/	
		Phthalate(DBP\BBP \DEHP\DIBP)	--	N.D.	

TEST REPORT

Report No.:MTi230109002-06C1

Page 23 of 70

Part No.	Sample Description	Test item	XRF Result	Chemical Test (mg/kg)	Conclusion
100	Resistance	Pb	BL	/	Pass
		Cd	BL	/	
		Hg	BL	/	
		Cr(Cr(VI))	BL	/	
		Br(PBBs&PBDEs)	BL	/	
		Phthalate(DBP\BBP \DEHP\DIBP)	--	N.D.	
101	Silvery metal	Pb	BL	/	Pass
		Cd	BL	/	
		Hg	BL	/	
		Cr(Cr(VI))	BL	/	
		Br(PBBs&PBDEs)	--	--	
		Phthalate(DBP\BBP \DEHP\DIBP)	--	--	
102	Black metal screw	Pb	BL	/	Pass
		Cd	BL	/	
		Hg	BL	/	
		Cr(Cr(VI))	BL	/	
		Br(PBBs&PBDEs)	--	--	
		Phthalate(DBP\BBP \DEHP\DIBP)	--	--	
103	Black IC	Pb	BL	/	Pass
		Cd	BL	/	
		Hg	BL	/	
		Cr(Cr(VI))	BL	/	
		Br(PBBs&PBDEs)	BL	/	
		Phthalate(DBP\BBP \DEHP\DIBP)	--	N.D.	
104	Black IC	Pb	BL	/	Pass
		Cd	BL	/	
		Hg	BL	/	
		Cr(Cr(VI))	BL	/	
		Br(PBBs&PBDEs)	BL	/	
		Phthalate(DBP\BBP \DEHP\DIBP)	--	N.D.	

TEST REPORT

Report No.:MTi230109002-06C1

Page 24 of 70

Part No.	Sample Description	Test item	XRF Result	Chemical Test (mg/kg)	Conclusion
105	Black plastic	Pb	BL	/	Pass
		Cd	BL	/	
		Hg	BL	/	
		Cr(Cr(VI))	BL	/	
		Br(PBBs&PBDEs)	BL	/	
		Phthalate(DBP\BBP \DEHP\DIBP)	--	N.D.	
106	White plastic	Pb	BL	/	Pass
		Cd	BL	/	
		Hg	BL	/	
		Cr(Cr(VI))	BL	/	
		Br(PBBs&PBDEs)	BL	/	
		Phthalate(DBP\BBP \DEHP\DIBP)	--	N.D.	
107	Crystal oscillator	Pb	BL	/	Pass
		Cd	BL	/	
		Hg	BL	/	
		Cr(Cr(VI))	BL	/	
		Br(PBBs&PBDEs)	BL	/	
		Phthalate(DBP\BBP \DEHP\DIBP)	--	N.D.	
108	Black IC	Pb	BL	/	Pass
		Cd	BL	/	
		Hg	BL	/	
		Cr(Cr(VI))	BL	/	
		Br(PBBs&PBDEs)	BL	/	
		Phthalate(DBP\BBP \DEHP\DIBP)	--	N.D.	
109	Yellow capacitance	Pb	BL	/	Pass
		Cd	BL	/	
		Hg	BL	/	
		Cr(Cr(VI))	BL	/	
		Br(PBBs&PBDEs)	BL	/	
		Phthalate(DBP\BBP \DEHP\DIBP)	--	N.D.	

TEST REPORT

Report No.:MTi230109002-06C1

Page 25 of 70

Part No.	Sample Description	Test item	XRF Result	Chemical Test (mg/kg)	Conclusion
110	Resistance	Pb	BL	/	Pass
		Cd	BL	/	
		Hg	BL	/	
		Cr(Cr(VI))	BL	/	
		Br(PBBs&PBDEs)	BL	/	
		Phthalate(DBP\BBP \DEHP\DIBP)	--	N.D.	
111	Audion	Pb	BL	/	Pass
		Cd	BL	/	
		Hg	BL	/	
		Cr(Cr(VI))	BL	/	
		Br(PBBs&PBDEs)	BL	/	
		Phthalate(DBP\BBP \DEHP\DIBP)	--	N.D.	
112	Black IC	Pb	BL	/	Pass
		Cd	BL	/	
		Hg	BL	/	
		Cr(Cr(VI))	BL	/	
		Br(PBBs&PBDEs)	BL	/	
		Phthalate(DBP\BBP \DEHP\DIBP)	--	N.D.	
113	Black IC	Pb	BL	/	Pass
		Cd	BL	/	
		Hg	BL	/	
		Cr(Cr(VI))	BL	/	
		Br(PBBs&PBDEs)	BL	/	
		Phthalate(DBP\BBP \DEHP\DIBP)	--	N.D.	
114	Black IC	Pb	BL	/	Pass
		Cd	BL	/	
		Hg	BL	/	
		Cr(Cr(VI))	BL	/	
		Br(PBBs&PBDEs)	BL	/	
		Phthalate(DBP\BBP \DEHP\DIBP)	--	N.D.	

TEST REPORT

Report No.:MTi230109002-06C1

Page 26 of 70

Part No.	Sample Description	Test item	XRF Result	Chemical Test (mg/kg)	Conclusion
115	Black IC	Pb	BL	/	Pass
		Cd	BL	/	
		Hg	BL	/	
		Cr(Cr(VI))	BL	/	
		Br(PBBs&PBDEs)	BL	/	
		Phthalate(DBP\BBP \DEHP\DIBP)	--	N.D.	
116	Gray capacitance	Pb	BL	/	Pass
		Cd	BL	/	
		Hg	BL	/	
		Cr(Cr(VI))	BL	/	
		Br(PBBs&PBDEs)	X	N.D.	
		Phthalate(DBP\BBP \DEHP\DIBP)	--	N.D.	
117	Silvery metal	Pb	BL	/	Pass
		Cd	BL	/	
		Hg	BL	/	
		Cr(Cr(VI))	BL	/	
		Br(PBBs&PBDEs)	--	--	
		Phthalate(DBP\BBP \DEHP\DIBP)	--	--	
118	Black IC	Pb	BL	/	Pass
		Cd	BL	/	
		Hg	BL	/	
		Cr(Cr(VI))	BL	/	
		Br(PBBs&PBDEs)	BL	/	
		Phthalate(DBP\BBP \DEHP\DIBP)	--	N.D.	
119	Fuse	Pb	BL	/	Pass
		Cd	BL	/	
		Hg	BL	/	
		Cr(Cr(VI))	BL	/	
		Br(PBBs&PBDEs)	BL	/	
		Phthalate(DBP\BBP \DEHP\DIBP)	--	N.D.	

TEST REPORT

Report No.:MTi230109002-06C1

Page 27 of 70

Part No.	Sample Description	Test item	XRF Result	Chemical Test (mg/kg)	Conclusion
120	Silvery metal	Pb	BL	/	Pass
		Cd	BL	/	
		Hg	BL	/	
		Cr(Cr(VI))	BL	/	
		Br(PBBs&PBDEs)	--	--	
		Phthalate(DBP\BBP \DEHP\DIBP)	--	--	
121	Silvery metal	Pb	BL	/	Pass
		Cd	BL	/	
		Hg	BL	/	
		Cr(Cr(VI))	BL	/	
		Br(PBBs&PBDEs)	--	--	
		Phthalate(DBP\BBP \DEHP\DIBP)	--	--	
122	Black metal screw	Pb	BL	/	Pass
		Cd	BL	/	
		Hg	BL	/	
		Cr(Cr(VI))	BL	/	
		Br(PBBs&PBDEs)	--	--	
		Phthalate(DBP\BBP \DEHP\DIBP)	--	--	
123	Yellow capacitor	Pb	BL	/	Pass
		Cd	BL	/	
		Hg	BL	/	
		Cr(Cr(VI))	BL	/	
		Br(PBBs&PBDEs)	X	N.D.	
		Phthalate(DBP\BBP \DEHP\DIBP)	--	N.D.	
124	Blue plastic	Pb	BL	/	Pass
		Cd	BL	/	
		Hg	BL	/	
		Cr(Cr(VI))	BL	/	
		Br(PBBs&PBDEs)	X	N.D.	
		Phthalate(DBP\BBP \DEHP\DIBP)	--	N.D.	

TEST REPORT

Report No.:MTi230109002-06C1

Page 28 of 70

Part No.	Sample Description	Test item	XRF Result	Chemical Test (mg/kg)	Conclusion
125	Copper metal line	Pb	BL	/	Pass
		Cd	BL	/	
		Hg	BL	/	
		Cr(Cr(VI))	BL	/	
		Br(PBBs&PBDEs)	--	--	
		Phthalate(DBP\BBP \DEHP\DIBP)	--	--	
126	Black magnet	Pb	BL	/	Pass
		Cd	BL	/	
		Hg	BL	/	
		Cr(Cr(VI))	BL	/	
		Br(PBBs&PBDEs)	--	--	
		Phthalate(DBP\BBP \DEHP\DIBP)	--	--	
127	Orange plastic	Pb	BL	/	Pass
		Cd	BL	/	
		Hg	BL	/	
		Cr(Cr(VI))	BL	/	
		Br(PBBs&PBDEs)	BL	/	
		Phthalate(DBP\BBP \DEHP\DIBP)	--	N.D.	
128	Silvery metal	Pb	BL	/	Pass
		Cd	BL	/	
		Hg	BL	/	
		Cr(Cr(VI))	BL	/	
		Br(PBBs&PBDEs)	--	--	
		Phthalate(DBP\BBP \DEHP\DIBP)	--	--	
129	Black plastic	Pb	BL	/	Pass
		Cd	BL	/	
		Hg	BL	/	
		Cr(Cr(VI))	BL	/	
		Br(PBBs&PBDEs)	BL	/	
		Phthalate(DBP\BBP \DEHP\DIBP)	--	N.D.	

TEST REPORT

Report No.:MTi230109002-06C1

Page 29 of 70

Part No.	Sample Description	Test item	XRF Result	Chemical Test (mg/kg)	Conclusion
130	Silvery metal	Pb	BL	/	Pass
		Cd	BL	/	
		Hg	BL	/	
		Cr(Cr(VI))	BL	/	
		Br(PBBs&PBDEs)	--	--	
		Phthalate(DBP\BBP \DEHP\DIBP)	--	--	
131	Copper metal	Pb	BL	/	Pass
		Cd	BL	/	
		Hg	BL	/	
		Cr(Cr(VI))	BL	/	
		Br(PBBs&PBDEs)	--	--	
		Phthalate(DBP\BBP \DEHP\DIBP)	--	--	
132	Silvery metal	Pb	BL	/	Pass
		Cd	BL	/	
		Hg	BL	/	
		Cr(Cr(VI))	BL	/	
		Br(PBBs&PBDEs)	--	--	
		Phthalate(DBP\BBP \DEHP\DIBP)	--	--	
133	Silvery metal	Pb	BL	/	Pass
		Cd	BL	/	
		Hg	BL	/	
		Cr(Cr(VI))	BL	/	
		Br(PBBs&PBDEs)	--	--	
		Phthalate(DBP\BBP \DEHP\DIBP)	--	--	
134	Copper metal line	Pb	BL	/	Pass
		Cd	BL	/	
		Hg	BL	/	
		Cr(Cr(VI))	BL	/	
		Br(PBBs&PBDEs)	--	--	
		Phthalate(DBP\BBP \DEHP\DIBP)	--	--	

TEST REPORT

Report No.:MTi230109002-06C1

Page 30 of 70

Part No.	Sample Description	Test item	XRF Result	Chemical Test (mg/kg)	Conclusion
135	Silvery metal	Pb	BL	/	Pass
		Cd	BL	/	
		Hg	BL	/	
		Cr(Cr(VI))	BL	/	
		Br(PBBs&PBDEs)	--	--	
		Phthalate(DBP\BBP \DEHP\DIBP)	--	--	
136	Black plastic	Pb	BL	/	Pass
		Cd	BL	/	
		Hg	BL	/	
		Cr(Cr(VI))	BL	/	
		Br(PBBs&PBDEs)	BL	/	
		Phthalate(DBP\BBP \DEHP\DIBP)	--	N.D.	
137	Black plastic	Pb	BL	/	Pass
		Cd	BL	/	
		Hg	BL	/	
		Cr(Cr(VI))	BL	/	
		Br(PBBs&PBDEs)	BL	/	
		Phthalate(DBP\BBP \DEHP\DIBP)	--	N.D.	
138	Silvery metal	Pb	BL	/	Pass
		Cd	BL	/	
		Hg	BL	/	
		Cr(Cr(VI))	BL	/	
		Br(PBBs&PBDEs)	--	--	
		Phthalate(DBP\BBP \DEHP\DIBP)	--	--	
139	Silvery metal	Pb	BL	/	Pass
		Cd	BL	/	
		Hg	BL	/	
		Cr(Cr(VI))	BL	/	
		Br(PBBs&PBDEs)	--	--	
		Phthalate(DBP\BBP \DEHP\DIBP)	--	--	

TEST REPORT

Report No.:MTi230109002-06C1

Page 31 of 70

Part No.	Sample Description	Test item	XRF Result	Chemical Test (mg/kg)	Conclusion
140	Pale yellow paper	Pb	BL	/	Pass
		Cd	BL	/	
		Hg	BL	/	
		Cr(Cr(VI))	BL	/	
		Br(PBBs&PBDEs)	BL	/	
		Phthalate(DBP\BBP \DEHP\DIBP)	--	N.D.	
141	Gray metal	Pb	BL	/	Pass
		Cd	BL	/	
		Hg	BL	/	
		Cr(Cr(VI))	BL	/	
		Br(PBBs&PBDEs)	--	--	
		Phthalate(DBP\BBP \DEHP\DIBP)	--	--	
142	Silvery metal	Pb	BL	/	Pass
		Cd	BL	/	
		Hg	BL	/	
		Cr(Cr(VI))	BL	/	
		Br(PBBs&PBDEs)	--	--	
		Phthalate(DBP\BBP \DEHP\DIBP)	--	--	
143	Black iron powder core	Pb	BL	/	Pass
		Cd	BL	/	
		Hg	BL	/	
		Cr(Cr(VI))	BL	/	
		Br(PBBs&PBDEs)	--	--	
		Phthalate(DBP\BBP \DEHP\DIBP)	--	--	
144	Brown metal line	Pb	BL	/	Pass
		Cd	BL	/	
		Hg	BL	/	
		Cr(Cr(VI))	BL	/	
		Br(PBBs&PBDEs)	--	--	
		Phthalate(DBP\BBP \DEHP\DIBP)	--	--	

TEST REPORT

Report No.:MTi230109002-06C1

Page 32 of 70

Part No.	Sample Description	Test item	XRF Result	Chemical Test (mg/kg)	Conclusion
145	Green iron powder core	Pb	BL	/	Pass
		Cd	BL	/	
		Hg	BL	/	
		Cr(Cr(VI))	BL	/	
		Br(PBBs&PBDEs)	--	--	
		Phthalate(DBP\BBP \DEHP\DIBP)	--	--	
146	Copper metal line	Pb	BL	/	Pass
		Cd	BL	/	
		Hg	BL	/	
		Cr(Cr(VI))	BL	/	
		Br(PBBs&PBDEs)	--	--	
		Phthalate(DBP\BBP \DEHP\DIBP)	--	--	
147	Black ceramics capacitors	Pb	BL	/	Pass
		Cd	BL	/	
		Hg	BL	/	
		Cr(Cr(VI))	BL	/	
		Br(PBBs&PBDEs)	--	--	
		Phthalate(DBP\BBP \DEHP\DIBP)	--	--	
148	Blue ceramics capacitors	Pb	BL	/	Pass
		Cd	BL	/	
		Hg	BL	/	
		Cr(Cr(VI))	BL	/	
		Br(PBBs&PBDEs)	--	--	
		Phthalate(DBP\BBP \DEHP\DIBP)	--	--	
149	Red ceramics capacitors	Pb	BL	/	Pass
		Cd	BL	/	
		Hg	BL	/	
		Cr(Cr(VI))	BL	/	
		Br(PBBs&PBDEs)	--	--	
		Phthalate(DBP\BBP \DEHP\DIBP)	--	--	

TEST REPORT

Report No.:MTi230109002-06C1

Page 33 of 70

Part No.	Sample Description	Test item	XRF Result	Chemical Test (mg/kg)	Conclusion
150	Golden metal	Pb	BL	/	Pass
		Cd	BL	/	
		Hg	BL	/	
		Cr(Cr(VI))	BL	/	
		Br(PBBs&PBDEs)	--	--	
		Phthalate(DBP\BBP \DEHP\DIBP)	--	--	
151	Yellow tape	Pb	BL	/	Pass
		Cd	BL	/	
		Hg	BL	/	
		Cr(Cr(VI))	BL	/	
		Br(PBBs&PBDEs)	BL	/	
		Phthalate(DBP\BBP \DEHP\DIBP)	--	N.D.	
152	Black magnet	Pb	BL	/	Pass
		Cd	BL	/	
		Hg	BL	/	
		Cr(Cr(VI))	BL	/	
		Br(PBBs&PBDEs)	--	--	
		Phthalate(DBP\BBP \DEHP\DIBP)	--	--	
153	Translucent plastic	Pb	BL	/	Pass
		Cd	BL	/	
		Hg	BL	/	
		Cr(Cr(VI))	BL	/	
		Br(PBBs&PBDEs)	BL	/	
		Phthalate(DBP\BBP \DEHP\DIBP)	--	N.D.	
154	Copper metal line	Pb	BL	/	Pass
		Cd	BL	/	
		Hg	BL	/	
		Cr(Cr(VI))	BL	/	
		Br(PBBs&PBDEs)	--	--	
		Phthalate(DBP\BBP \DEHP\DIBP)	--	--	

TEST REPORT

Report No.:MTi230109002-06C1

Page 34 of 70

Part No.	Sample Description	Test item	XRF Result	Chemical Test (mg/kg)	Conclusion
155	Diode	Pb	BL	/	Pass
		Cd	BL	/	
		Hg	BL	/	
		Cr(Cr(VI))	BL	/	
		Br(PBBs&PBDEs)	BL	/	
		Phthalate(DBP\BBP \DEHP\DIBP)	--	N.D.	
156	Black IC	Pb	BL	/	Pass
		Cd	BL	/	
		Hg	BL	/	
		Cr(Cr(VI))	BL	/	
		Br(PBBs&PBDEs)	BL	/	
		Phthalate(DBP\BBP \DEHP\DIBP)	--	N.D.	
157	Resistance	Pb	BL	/	Pass
		Cd	BL	/	
		Hg	BL	/	
		Cr(Cr(VI))	BL	/	
		Br(PBBs&PBDEs)	BL	/	
		Phthalate(DBP\BBP \DEHP\DIBP)	--	N.D.	
158	Black IC	Pb	BL	/	Pass
		Cd	BL	/	
		Hg	BL	/	
		Cr(Cr(VI))	BL	/	
		Br(PBBs&PBDEs)	BL	/	
		Phthalate(DBP\BBP \DEHP\DIBP)	--	N.D.	
159	Green PCB	Pb	BL	/	Pass
		Cd	BL	/	
		Hg	BL	/	
		Cr(Cr(VI))	BL	/	
		Br(PBBs&PBDEs)	BL	/	
		Phthalate(DBP\BBP \DEHP\DIBP)	--	N.D.	

TEST REPORT

Report No.:MTi230109002-06C1

Page 35 of 70

Part No.	Sample Description	Test item	XRF Result	Chemical Test (mg/kg)	Conclusion
160	Solder	Pb	BL	/	Pass
		Cd	BL	/	
		Hg	BL	/	
		Cr(Cr(VI))	BL	/	
		Br(PBBs&PBDEs)	--	--	
		Phthalate(DBP\BBP \DEHP\DIBP)	--	--	
161	Black IC	Pb	BL	/	Pass
		Cd	BL	/	
		Hg	BL	/	
		Cr(Cr(VI))	BL	/	
		Br(PBBs&PBDEs)	BL	/	
		Phthalate(DBP\BBP \DEHP\DIBP)	--	N.D.	
162	Resistance	Pb	BL	/	Pass
		Cd	BL	/	
		Hg	BL	/	
		Cr(Cr(VI))	BL	/	
		Br(PBBs&PBDEs)	BL	/	
		Phthalate(DBP\BBP \DEHP\DIBP)	--	N.D.	
163	Inductor	Pb	BL	/	Pass
		Cd	BL	/	
		Hg	BL	/	
		Cr(Cr(VI))	BL	/	
		Br(PBBs&PBDEs)	BL	/	
		Phthalate(DBP\BBP \DEHP\DIBP)	--	N.D.	
164	Black IC	Pb	BL	/	Pass
		Cd	BL	/	
		Hg	BL	/	
		Cr(Cr(VI))	BL	/	
		Br(PBBs&PBDEs)	BL	/	
		Phthalate(DBP\BBP \DEHP\DIBP)	--	N.D.	

TEST REPORT

Report No.:MTi230109002-06C1

Page 36 of 70

Part No.	Sample Description	Test item	XRF Result	Chemical Test (mg/kg)	Conclusion
165	Yellow capacitance	Pb	BL	/	Pass
		Cd	BL	/	
		Hg	BL	/	
		Cr(Cr(VI))	BL	/	
		Br(PBBs&PBDEs)	BL	/	
		Phthalate(DBP\BBP \DEHP\DIBP)	--	N.D.	
166	Black IC	Pb	BL	/	Pass
		Cd	BL	/	
		Hg	BL	/	
		Cr(Cr(VI))	BL	/	
		Br(PBBs&PBDEs)	BL	/	
		Phthalate(DBP\BBP \DEHP\DIBP)	--	N.D.	
167	Diode	Pb	BL	/	Pass
		Cd	BL	/	
		Hg	BL	/	
		Cr(Cr(VI))	BL	/	
		Br(PBBs&PBDEs)	BL	/	
		Phthalate(DBP\BBP \DEHP\DIBP)	--	N.D.	
168	Black plastic	Pb	BL	/	Pass
		Cd	BL	/	
		Hg	BL	/	
		Cr(Cr(VI))	BL	/	
		Br(PBBs&PBDEs)	BL	/	
		Phthalate(DBP\BBP \DEHP\DIBP)	--	N.D.	
169	Silvery metal	Pb	BL	/	Pass
		Cd	BL	/	
		Hg	BL	/	
		Cr(Cr(VI))	BL	/	
		Br(PBBs&PBDEs)	--	--	
		Phthalate(DBP\BBP \DEHP\DIBP)	--	--	

TEST REPORT

Report No.:MTi230109002-06C1

Page 37 of 70

Part No.	Sample Description	Test item	XRF Result	Chemical Test (mg/kg)	Conclusion
170	Black line skin	Pb	BL	/	Pass
		Cd	BL	/	
		Hg	BL	/	
		Cr(Cr(VI))	BL	/	
		Br(PBBs&PBDEs)	BL	/	
		Phthalate(DBP\BBP \DEHP\DIBP)	--	N.D.	
171	Red line skin	Pb	BL	/	Pass
		Cd	BL	/	
		Hg	BL	/	
		Cr(Cr(VI))	BL	/	
		Br(PBBs&PBDEs)	BL	/	
		Phthalate(DBP\BBP \DEHP\DIBP)	--	N.D.	
172	Silvery metal line	Pb	BL	/	Pass
		Cd	BL	/	
		Hg	BL	/	
		Cr(Cr(VI))	BL	/	
		Br(PBBs&PBDEs)	--	--	
		Phthalate(DBP\BBP \DEHP\DIBP)	--	--	
173	Yellow line skin	Pb	BL	/	Pass
		Cd	BL	/	
		Hg	BL	/	
		Cr(Cr(VI))	BL	/	
		Br(PBBs&PBDEs)	BL	/	
		Phthalate(DBP\BBP \DEHP\DIBP)	--	N.D.	
174	Silvery metal line	Pb	BL	/	Pass
		Cd	BL	/	
		Hg	BL	/	
		Cr(Cr(VI))	BL	/	
		Br(PBBs&PBDEs)	--	--	
		Phthalate(DBP\BBP \DEHP\DIBP)	--	--	

TEST REPORT

Report No.:MTi230109002-06C1

Page 38 of 70

Part No.	Sample Description	Test item	XRF Result	Chemical Test (mg/kg)	Conclusion
175	Transparency plastic	Pb	BL	/	Pass
		Cd	BL	/	
		Hg	BL	/	
		Cr(Cr(VI))	BL	/	
		Br(PBBs&PBDEs)	BL	/	
		Phthalate(DBP\BBP \DEHP\DIBP)	--	N.D.	
176	Silvery metal	Pb	BL	/	Pass
		Cd	BL	/	
		Hg	BL	/	
		Cr(Cr(VI))	BL	/	
		Br(PBBs&PBDEs)	--	--	
		Phthalate(DBP\BBP \DEHP\DIBP)	--	--	
177	Black plastic	Pb	BL	/	Pass
		Cd	BL	/	
		Hg	BL	/	
		Cr(Cr(VI))	BL	/	
		Br(PBBs&PBDEs)	BL	/	
		Phthalate(DBP\BBP \DEHP\DIBP)	--	N.D.	
178	Green and yellow line skin	Pb	BL	/	Pass
		Cd	BL	/	
		Hg	BL	/	
		Cr(Cr(VI))	BL	/	
		Br(PBBs&PBDEs)	BL	/	
		Phthalate(DBP\BBP \DEHP\DIBP)	--	N.D.	
179	Silvery metal line	Pb	BL	/	Pass
		Cd	BL	/	
		Hg	BL	/	
		Cr(Cr(VI))	BL	/	
		Br(PBBs&PBDEs)	--	--	
		Phthalate(DBP\BBP \DEHP\DIBP)	--	--	

TEST REPORT

Report No.:MTi230109002-06C1

Page 39 of 70

Part No.	Sample Description	Test item	XRF Result	Chemical Test (mg/kg)	Conclusion
180	Black plastic	Pb	BL	/	Pass
		Cd	BL	/	
		Hg	BL	/	
		Cr(Cr(VI))	BL	/	
		Br(PBBs&PBDEs)	BL	/	
		Phthalate(DBP\BBP \DEHP\DIBP)	--	N.D.	
181	Silvery metal	Pb	BL	/	Pass
		Cd	BL	/	
		Hg	BL	/	
		Cr(Cr(VI))	BL	/	
		Br(PBBs&PBDEs)	--	--	
		Phthalate(DBP\BBP \DEHP\DIBP)	--	--	
182	Black IC	Pb	BL	/	Pass
		Cd	BL	/	
		Hg	BL	/	
		Cr(Cr(VI))	BL	/	
		Br(PBBs&PBDEs)	BL	/	
		Phthalate(DBP\BBP \DEHP\DIBP)	--	N.D.	
183	Yellow capacitance	Pb	BL	/	Pass
		Cd	BL	/	
		Hg	BL	/	
		Cr(Cr(VI))	BL	/	
		Br(PBBs&PBDEs)	BL	/	
		Phthalate(DBP\BBP \DEHP\DIBP)	--	N.D.	
184	Resistance	Pb	BL	/	Pass
		Cd	BL	/	
		Hg	BL	/	
		Cr(Cr(VI))	BL	/	
		Br(PBBs&PBDEs)	BL	/	
		Phthalate(DBP\BBP \DEHP\DIBP)	--	N.D.	

TEST REPORT

Report No.:MTi230109002-06C1

Page 40 of 70

Part No.	Sample Description	Test item	XRF Result	Chemical Test (mg/kg)	Conclusion
185	Black IC	Pb	BL	/	Pass
		Cd	BL	/	
		Hg	BL	/	
		Cr(Cr(VI))	BL	/	
		Br(PBBs&PBDEs)	BL	/	
		Phthalate(DBP\BBP \DEHP\DIBP)	--	N.D.	
186	Black IC	Pb	BL	/	Pass
		Cd	BL	/	
		Hg	BL	/	
		Cr(Cr(VI))	BL	/	
		Br(PBBs&PBDEs)	BL	/	
		Phthalate(DBP\BBP \DEHP\DIBP)	--	N.D.	
187	Color ring resistor	Pb	BL	/	Pass
		Cd	BL	/	
		Hg	BL	/	
		Cr(Cr(VI))	BL	/	
		Br(PBBs&PBDEs)	BL	/	
		Phthalate(DBP\BBP \DEHP\DIBP)	--	N.D.	
188	Audion	Pb	BL	/	Pass
		Cd	BL	/	
		Hg	BL	/	
		Cr(Cr(VI))	BL	/	
		Br(PBBs&PBDEs)	BL	/	
		Phthalate(DBP\BBP \DEHP\DIBP)	--	N.D.	
189	Resistance	Pb	BL	/	Pass
		Cd	BL	/	
		Hg	BL	/	
		Cr(Cr(VI))	BL	/	
		Br(PBBs&PBDEs)	BL	/	
		Phthalate(DBP\BBP \DEHP\DIBP)	--	N.D.	

TEST REPORT

Report No.:MTi230109002-06C1

Page 41 of 70

Part No.	Sample Description	Test item	XRF Result	Chemical Test (mg/kg)	Conclusion
190	Diode	Pb	BL	/	Pass
		Cd	BL	/	
		Hg	BL	/	
		Cr(Cr(VI))	BL	/	
		Br(PBBs&PBDEs)	BL	/	
		Phthalate(DBP\BBP \DEHP\DIBP)	--	N.D.	
191	Silvery capacitor	Pb	BL	/	Pass
		Cd	BL	/	
		Hg	BL	/	
		Cr(Cr(VI))	BL	/	
		Br(PBBs&PBDEs)	BL	/	
		Phthalate(DBP\BBP \DEHP\DIBP)	--	N.D.	
192	Patch fuse	Pb	BL	/	Pass
		Cd	BL	/	
		Hg	BL	/	
		Cr(Cr(VI))	BL	/	
		Br(PBBs&PBDEs)	BL	/	
		Phthalate(DBP\BBP \DEHP\DIBP)	--	N.D.	
193	Diode	Pb	BL	/	Pass
		Cd	BL	/	
		Hg	BL	/	
		Cr(Cr(VI))	BL	/	
		Br(PBBs&PBDEs)	BL	/	
		Phthalate(DBP\BBP \DEHP\DIBP)	--	N.D.	
194	Black IC	Pb	BL	/	Pass
		Cd	BL	/	
		Hg	BL	/	
		Cr(Cr(VI))	BL	/	
		Br(PBBs&PBDEs)	BL	/	
		Phthalate(DBP\BBP \DEHP\DIBP)	--	N.D.	

TEST REPORT

Report No.:MTi230109002-06C1

Page 42 of 70

Part No.	Sample Description	Test item	XRF Result	Chemical Test (mg/kg)	Conclusion
195	Silvery metal	Pb	BL	/	Pass
		Cd	BL	/	
		Hg	BL	/	
		Cr(Cr(VI))	BL	/	
		Br(PBBs&PBDEs)	--	--	
		Phthalate(DBP\BBP \DEHP\DIBP)	--	--	
196	White plastic	Pb	BL	/	Pass
		Cd	BL	/	
		Hg	BL	/	
		Cr(Cr(VI))	BL	/	
		Br(PBBs&PBDEs)	BL	/	
		Phthalate(DBP\BBP \DEHP\DIBP)	--	N.D.	
197	White plastic	Pb	BL	/	Pass
		Cd	BL	/	
		Hg	BL	/	
		Cr(Cr(VI))	BL	/	
		Br(PBBs&PBDEs)	BL	/	
		Phthalate(DBP\BBP \DEHP\DIBP)	--	N.D.	
198	Silvery metal line	Pb	BL	/	Pass
		Cd	BL	/	
		Hg	BL	/	
		Cr(Cr(VI))	BL	/	
		Br(PBBs&PBDEs)	--	--	
		Phthalate(DBP\BBP \DEHP\DIBP)	--	--	
199	White plastic	Pb	BL	/	Pass
		Cd	BL	/	
		Hg	BL	/	
		Cr(Cr(VI))	BL	/	
		Br(PBBs&PBDEs)	BL	/	
		Phthalate(DBP\BBP \DEHP\DIBP)	--	N.D.	

TEST REPORT

Report No.:MTi230109002-06C1

Page 43 of 70

Part No.	Sample Description	Test item	XRF Result	Chemical Test (mg/kg)	Conclusion
200	Silvery metal	Pb	BL	/	Pass
		Cd	BL	/	
		Hg	BL	/	
		Cr(Cr(VI))	BL	/	
		Br(PBBs&PBDEs)	--	--	
		Phthalate(DBP\BBP \DEHP\DIBP)	--	--	
201	Red line skin	Pb	BL	/	Pass
		Cd	BL	/	
		Hg	BL	/	
		Cr(Cr(VI))	BL	/	
		Br(PBBs&PBDEs)	BL	/	
		Phthalate(DBP\BBP \DEHP\DIBP)	--	N.D.	
202	Black plastic	Pb	BL	/	Pass
		Cd	BL	/	
		Hg	BL	/	
		Cr(Cr(VI))	BL	/	
		Br(PBBs&PBDEs)	BL	/	
		Phthalate(DBP\BBP \DEHP\DIBP)	--	N.D.	
203	White plastic	Pb	BL	/	Pass
		Cd	BL	/	
		Hg	BL	/	
		Cr(Cr(VI))	BL	/	
		Br(PBBs&PBDEs)	BL	/	
		Phthalate(DBP\BBP \DEHP\DIBP)	--	N.D.	
204	White ware	Pb	BL	/	Pass
		Cd	BL	/	
		Hg	BL	/	
		Cr(Cr(VI))	BL	/	
		Br(PBBs&PBDEs)	--	--	
		Phthalate(DBP\BBP \DEHP\DIBP)	--	--	

TEST REPORT

Report No.:MTi230109002-06C1

Page 44 of 70

Part No.	Sample Description	Test item	XRF Result	Chemical Test (mg/kg)	Conclusion
205	Silvery metal	Pb	BL	/	Pass
		Cd	BL	/	
		Hg	BL	/	
		Cr(Cr(VI))	BL	/	
		Br(PBBs&PBDEs)	--	--	
		Phthalate(DBP\BBP \DEHP\DIBP)	--	--	
206	Copper metal	Pb	BL	/	Pass
		Cd	BL	/	
		Hg	BL	/	
		Cr(Cr(VI))	BL	/	
		Br(PBBs&PBDEs)	--	--	
		Phthalate(DBP\BBP \DEHP\DIBP)	--	--	
207	Silvery metal	Pb	BL	/	Pass
		Cd	BL	/	
		Hg	BL	/	
		Cr(Cr(VI))	BL	/	
		Br(PBBs&PBDEs)	--	--	
		Phthalate(DBP\BBP \DEHP\DIBP)	--	--	
208	Silvery metal	Pb	BL	/	Pass
		Cd	BL	/	
		Hg	BL	/	
		Cr(Cr(VI))	BL	/	
		Br(PBBs&PBDEs)	--	--	
		Phthalate(DBP\BBP \DEHP\DIBP)	--	--	
209	Yellow plastic	Pb	BL	/	Pass
		Cd	BL	/	
		Hg	BL	/	
		Cr(Cr(VI))	BL	/	
		Br(PBBs&PBDEs)	BL	/	
		Phthalate(DBP\BBP \DEHP\DIBP)	--	N.D.	

TEST REPORT

Report No.:MTi230109002-06C1

Page 45 of 70

Part No.	Sample Description	Test item	XRF Result	Chemical Test (mg/kg)	Conclusion
210	Silvery metal	Pb	BL	/	Pass
		Cd	BL	/	
		Hg	BL	/	
		Cr(Cr(VI))	BL	/	
		Br(PBBs&PBDEs)	--	--	
		Phthalate(DBP\BBP \DEHP\DIBP)	--	--	
211	Silvery metal nut	Pb	BL	/	Pass
		Cd	BL	/	
		Hg	BL	/	
		Cr(Cr(VI))	BL	/	
		Br(PBBs&PBDEs)	--	--	
		Phthalate(DBP\BBP \DEHP\DIBP)	--	--	
213	White paper tag	Pb	BL	/	Pass
		Cd	BL	/	
		Hg	BL	/	
		Cr(Cr(VI))	BL	/	
		Br(PBBs&PBDEs)	--	--	
		Phthalate(DBP\BBP \DEHP\DIBP)	--	--	
214	Grey plastic case	Pb	BL	/	Pass
		Cd	BL	/	
		Hg	BL	/	
		Cr(Cr(VI))	BL	/	
		Br(PBBs&PBDEs)	--	--	
		Phthalate(DBP\BBP \DEHP\DIBP)	--	--	
215	Black soft plastic	Pb	BL	/	Pass
		Cd	BL	/	
		Hg	BL	/	
		Cr(Cr(VI))	BL	/	
		Br(PBBs&PBDEs)	BL	/	
		Phthalate(DBP\BBP \DEHP\DIBP)	--	N.D.	

TEST REPORT

Report No.:MTi230109002-06C1

Page 46 of 70

Part No.	Sample Description	Test item	XRF Result	Chemical Test (mg/kg)	Conclusion
216	Gray plastic case	Pb	BL	/	Pass
		Cd	BL	/	
		Hg	BL	/	
		Cr(Cr(VI))	BL	/	
		Br(PBBs&PBDEs)	--	--	
		Phthalate(DBP\BBP \DEHP\DIBP)	--	--	
217	Silvery metal	Pb	BL	/	Pass
		Cd	BL	/	
		Hg	BL	/	
		Cr(Cr(VI))	BL	/	
		Br(PBBs&PBDEs)	--	--	
		Phthalate(DBP\BBP \DEHP\DIBP)	--	--	
218	White plastic case	Pb	BL	/	Pass
		Cd	BL	/	
		Hg	BL	/	
		Cr(Cr(VI))	BL	/	
		Br(PBBs&PBDEs)	--	--	
		Phthalate(DBP\BBP \DEHP\DIBP)	--	--	
219	Black soft plastic	Pb	BL	/	Pass
		Cd	BL	/	
		Hg	BL	/	
		Cr(Cr(VI))	BL	/	
		Br(PBBs&PBDEs)	--	--	
		Phthalate(DBP\BBP \DEHP\DIBP)	--	--	
220	Grey plastic case	Pb	BL	/	Pass
		Cd	BL	/	
		Hg	BL	/	
		Cr(Cr(VI))	BL	/	
		Br(PBBs&PBDEs)	BL	/	
		Phthalate(DBP\BBP \DEHP\DIBP)	--	N.D.	

Remark: All test results are referenced to report:MTi211108008-06C1.

Remark:

- (1) (a) It is the result on total Br while test item on restricted substances is PBBs/PBDEs. It is the result on total Cr while test item on restricted substances is Cr⁶⁺.
- (b) Results are obtained by XRF for primary screening, and further chemical testing by ICP-OES (for Cd, Pb, Hg), UV-Vis (for Cr(VI)) and GC-MS (for PBBs, PBDEs) is recommended to be performed, if the concentration exceeds the below warning value according to IEC62321-3-1:2013 (unit: mg/kg).

Element	Polymers	Metals	Composite Material
Cd	$BL \leq (70-3\sigma) < X < (130+3\sigma) \leq OL$	$BL \leq (70-3\sigma) < X < (130+3\sigma) \leq OL$	$LOD < X < (150+3\sigma) \leq OL$
Pb	$BL \leq (700-3\sigma) < X < (1300+3\sigma) \leq OL$	$BL \leq (700-3\sigma) < X < (1300+3\sigma) \leq OL$	$BL \leq (500-3\sigma) < X < (1500+3\sigma) \leq OL$
Hg	$BL \leq (700-3\sigma) < X < (1300+3\sigma) \leq OL$	$BL \leq (700-3\sigma) < X < (1300+3\sigma) \leq OL$	$BL \leq (500-3\sigma) < X < (1500+3\sigma) \leq OL$
Cr	$BL \leq (700-3\sigma) < X$	$BL \leq (700-3\sigma) < X$	$BL \leq (500-3\sigma) < X$
Br	$BL \leq (300-3\sigma) < X$	NA	$BL \leq (250-3\sigma) < X$

(c) OL=Over Limit, BL=Below Limit, X=inconclusive, LOD=Limit of Detection, NA=not applicable, -- = No Testing

(d) The XRF screening test for RoHS elements-The reading may be different to the actual content in the sample be of non-uniformity composition

(2) (a) mg/kg=ppm=0.0001%, N.D.=not detected (<MDL)

(b) Unit and Method Detection Limit(MDL) in wet chemical test

Test Items	Unit	MDL	Limit
Pb	mg/kg	2	1000
Cd	mg/kg	2	100
Hg	mg/kg	2	1000
Cr ⁶⁺	mg/kg	See below	1000
PBBs	mg/kg	See below	1000
PBDEs	mg/kg	See below	1000
DBP	mg/kg	50	1000
BBP	mg/kg	50	1000

DEHP	mg/kg	50	1000
DIBP	mg/kg	50	1000

The MDL for single compound of PBBs & PBDEs is 20mg/kg, MDL of Cr⁶⁺ for metal sample is 0.10µg/cm². and MDL of Cr⁶⁺ for polymer & composite sample is 8 mg/kg.

(c) Metal sample:

-The sample is positive for Cr⁶⁺ if the Cr⁶⁺ concentration is greater than 0.13 µg/cm².

The sample coating is considered to contain Cr⁶⁺.

-The sample is negative for Cr⁶⁺ if Cr⁶⁺ is ND (concentration less than 0.10 µg/cm²).

The coating is considered a non- Cr⁶⁺ based coating

-The result between 0.10 µg/cm² and 0.13 µg/cm² is considered to be inconclusive, unavoidable coating variations may influence the determination

Information on storage conditions and production date of the tested sample is unavailable and thus Cr⁶⁺ results represent status of the sample at the time of testing.

(3) As specified by client to test the specified materials only.

(4) *According to the declaration from the client, Lead (Pb) in the sample are exempted by EU RoHS Directive 2011/65/EU based on ANNEX III 6(c): Copper alloy containing no more than 4% lead by weigh

2. With reference to EU Battery Directive (2006/66/EC & 2013/56/EU) to test Lead(Pb), Cadmium(Cd), Mercury(Hg) content.

Test Method: Refer to IEC 62321-5:2013 and IEC 62321-4:2017, analyzed by ICP-OES.

Part No.	Item	Unit	MDL	Results	Required Limit
212	Lead (Pb)	%	0.001	N.D.	0.004*
	Cadmium (Cd)	%	0.001	N.D.	0.002
	Mercury (Hg)	%	0.0005	N.D.	0.0005

Note:

- N.D. = Not Detected or less than MDL
- MDL = Method Detection Limit
- 1mg/kg=1ppm=0.0001%
- *: According to 2006/66/EC battery directive if the lead content is more than 40 ppm (40mg/kg), the sample must be marked "Pb".

Remark:

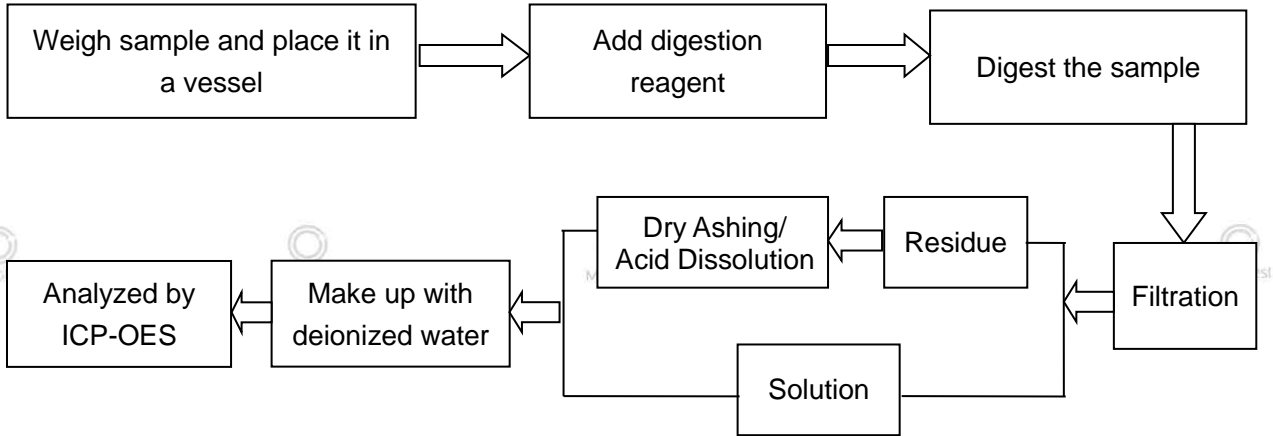
The requirement is following article 4 and 21 of Directive 2006/66/EC and 2013/56/EU.

- According to Directive 2013/56/EU, after 1 October, 2015, button cells shall not contain more than 0.0005% by weight of Mercury.
- According to Directive 2006/66/EC, all batteries, accumulators and battery packs must be appropriately marked with the symbol indicating "separate collection" shown below.

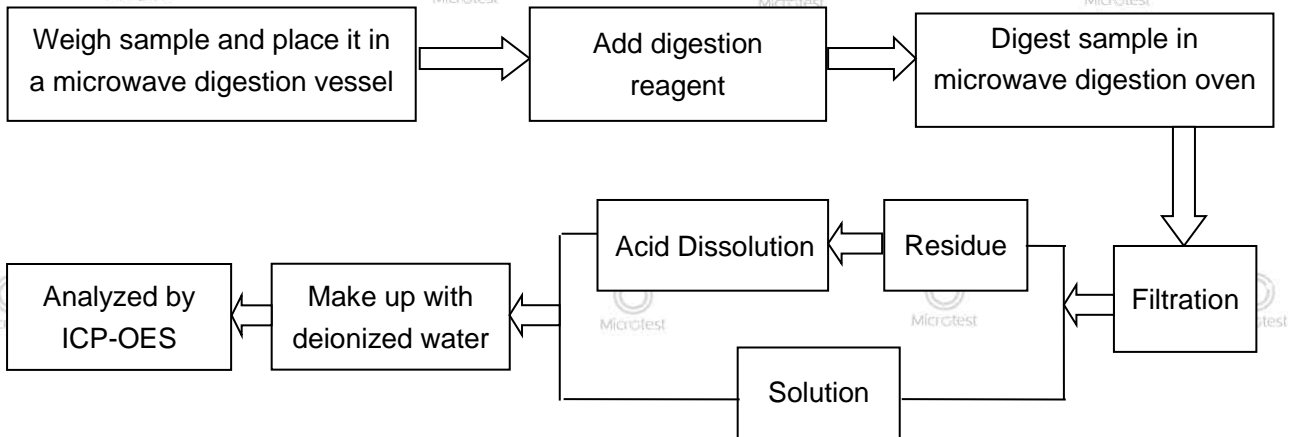


Testing flow chart:

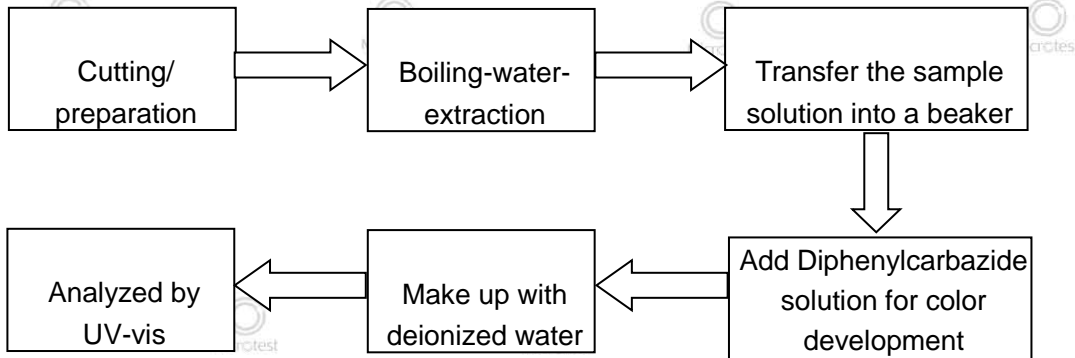
1. Lead, Cadmium



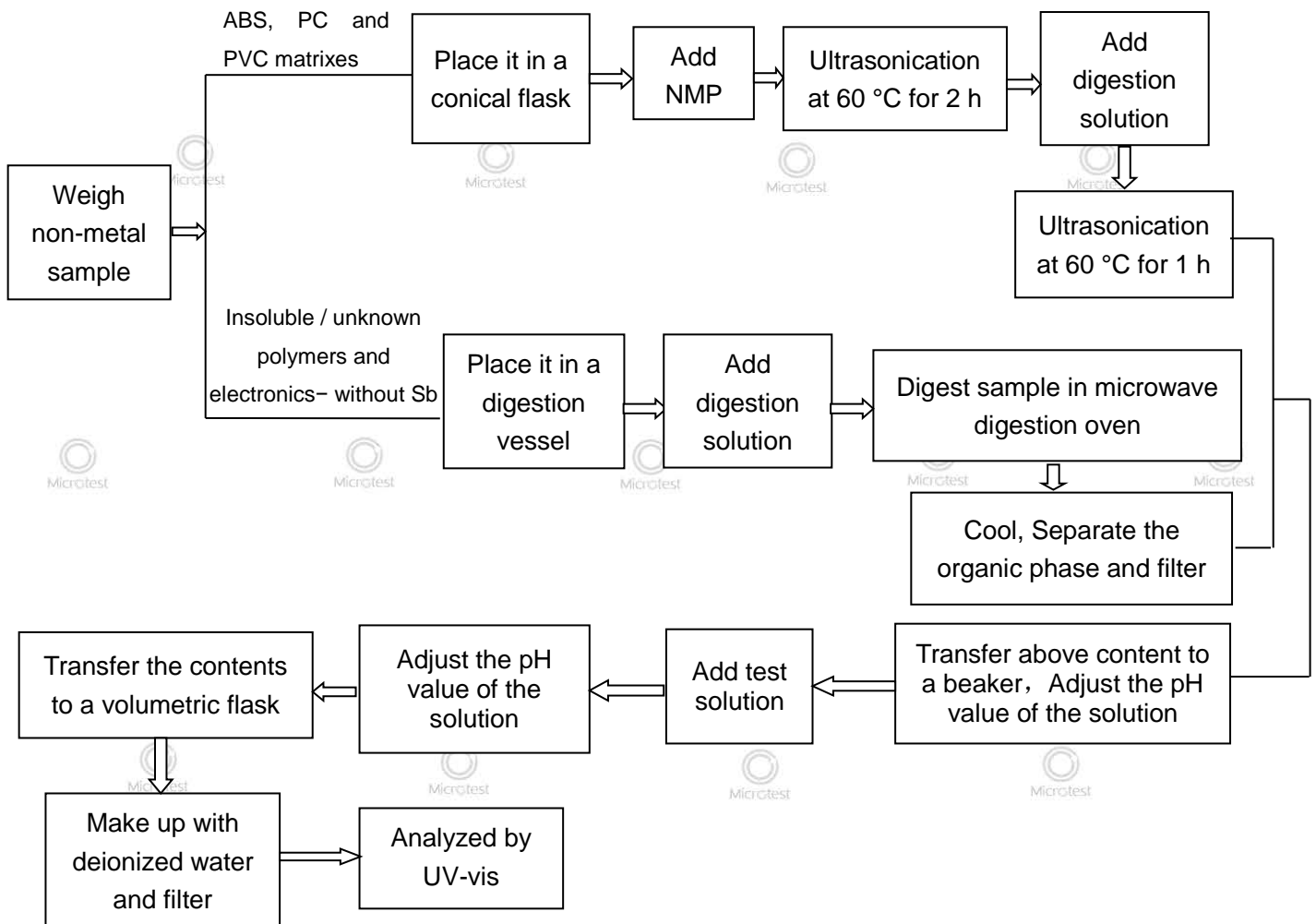
2. Mercury



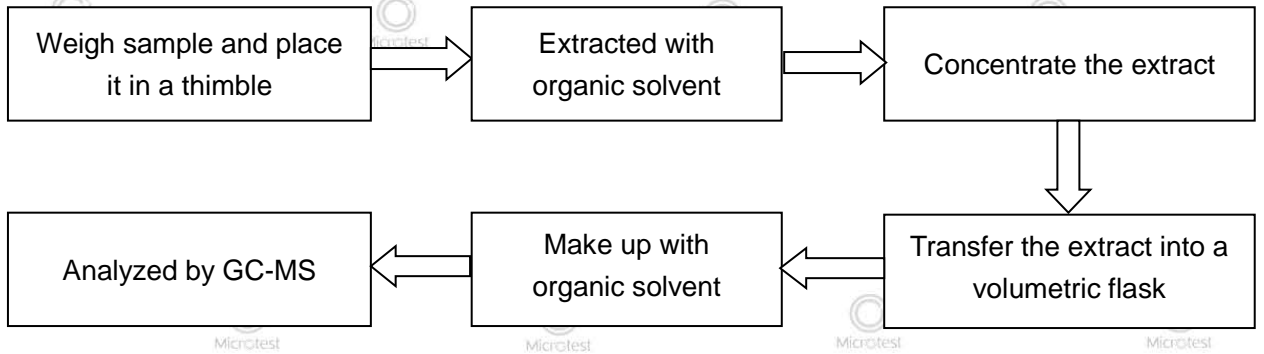
3. Hexavalent Chromium (For metal material)



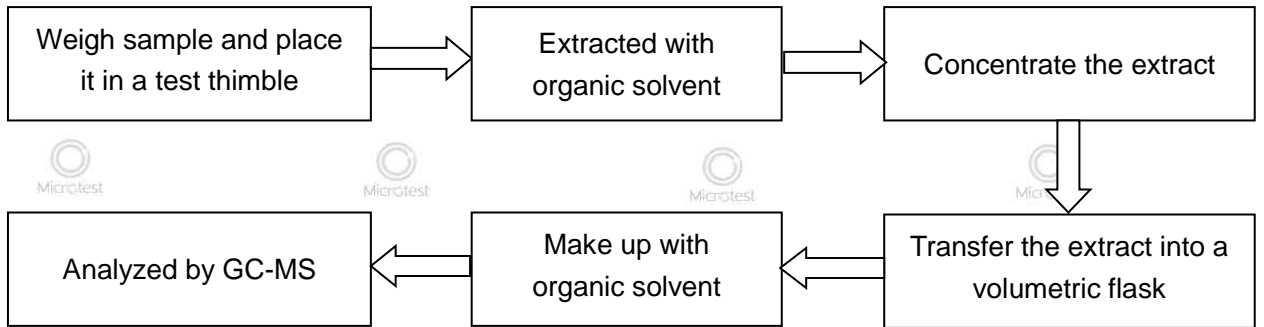
4. Hexavalent Chromium(For non-metal material):



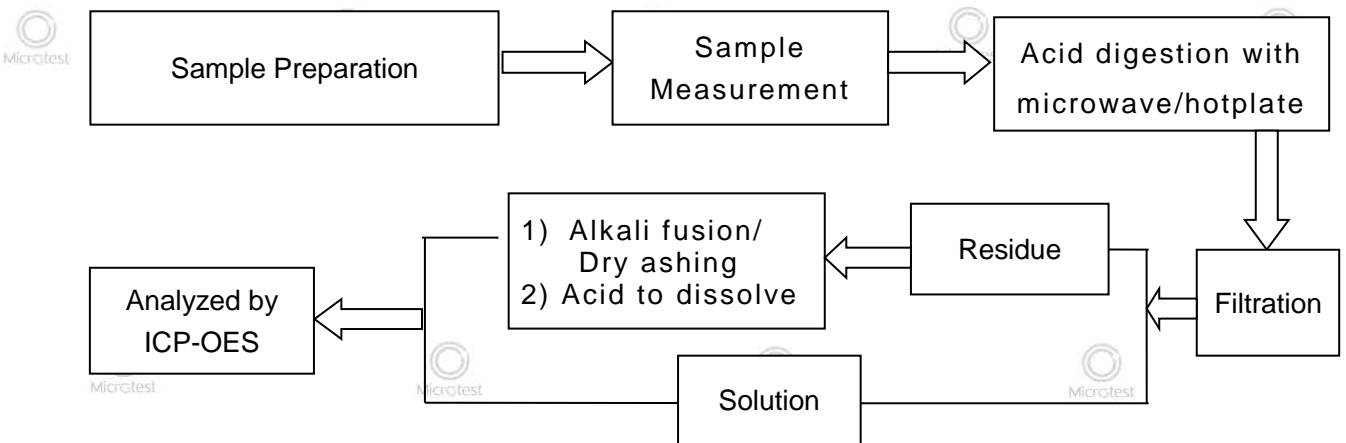
5. Polybromobiphenyls (PBBs), Polybromodiphenyl ethers (PBDEs)



6. Phthalates(DBP, BBP, DEHP, DIBP)

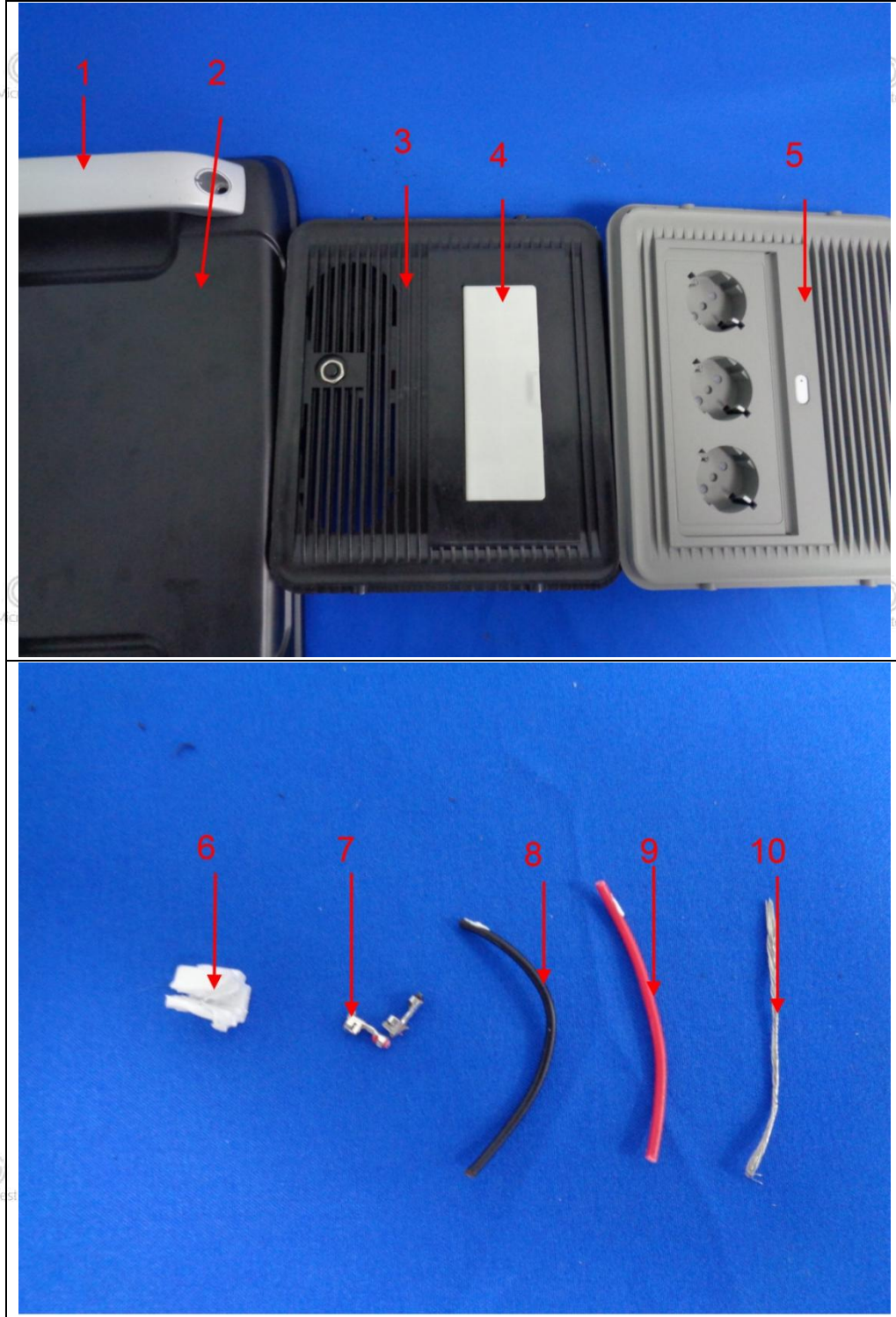


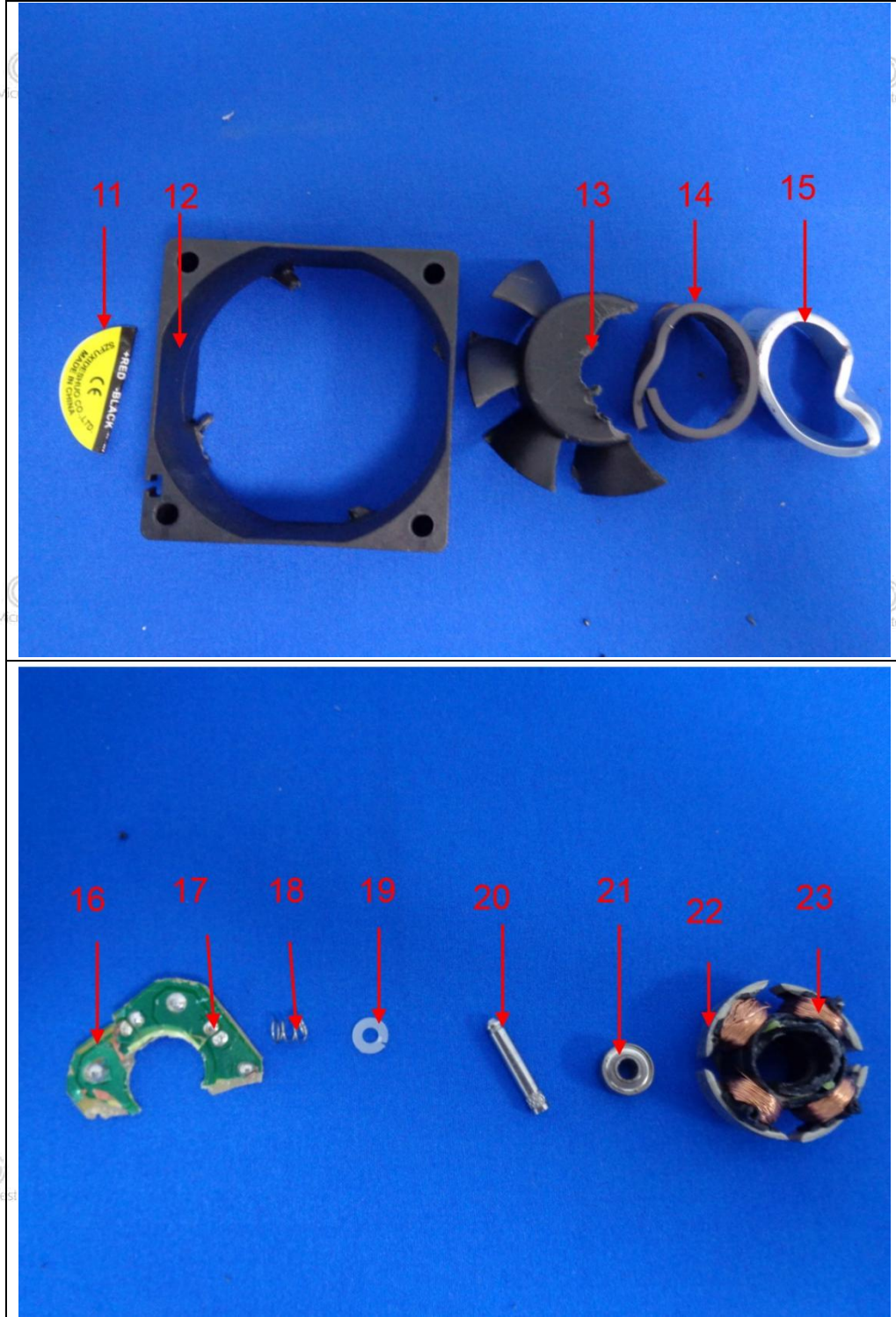
7. Lead(Pb), Cadmium(Cd), Mercury(Hg) - EU Battery Directive (2006/66/EC & 2013/56/EU)

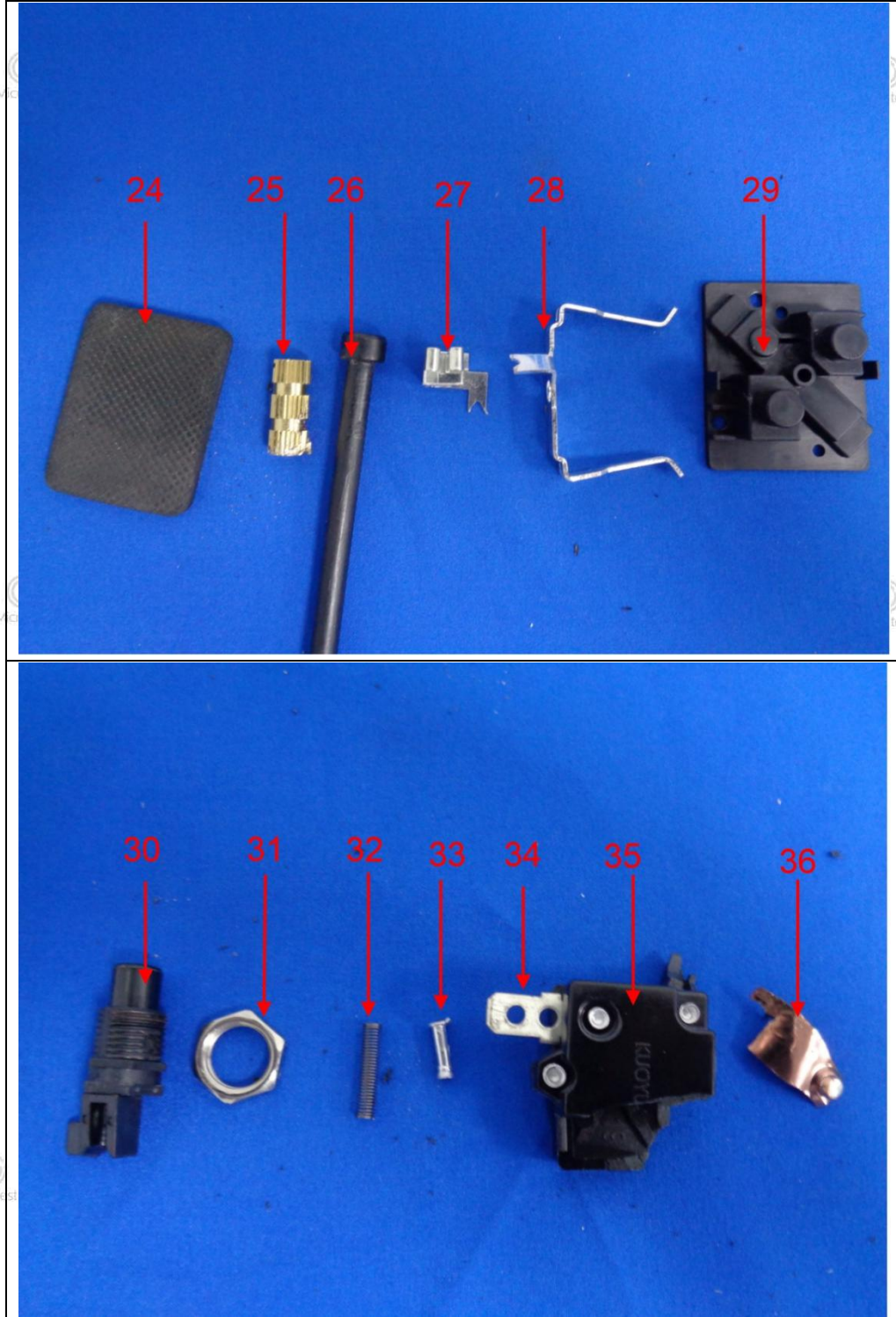


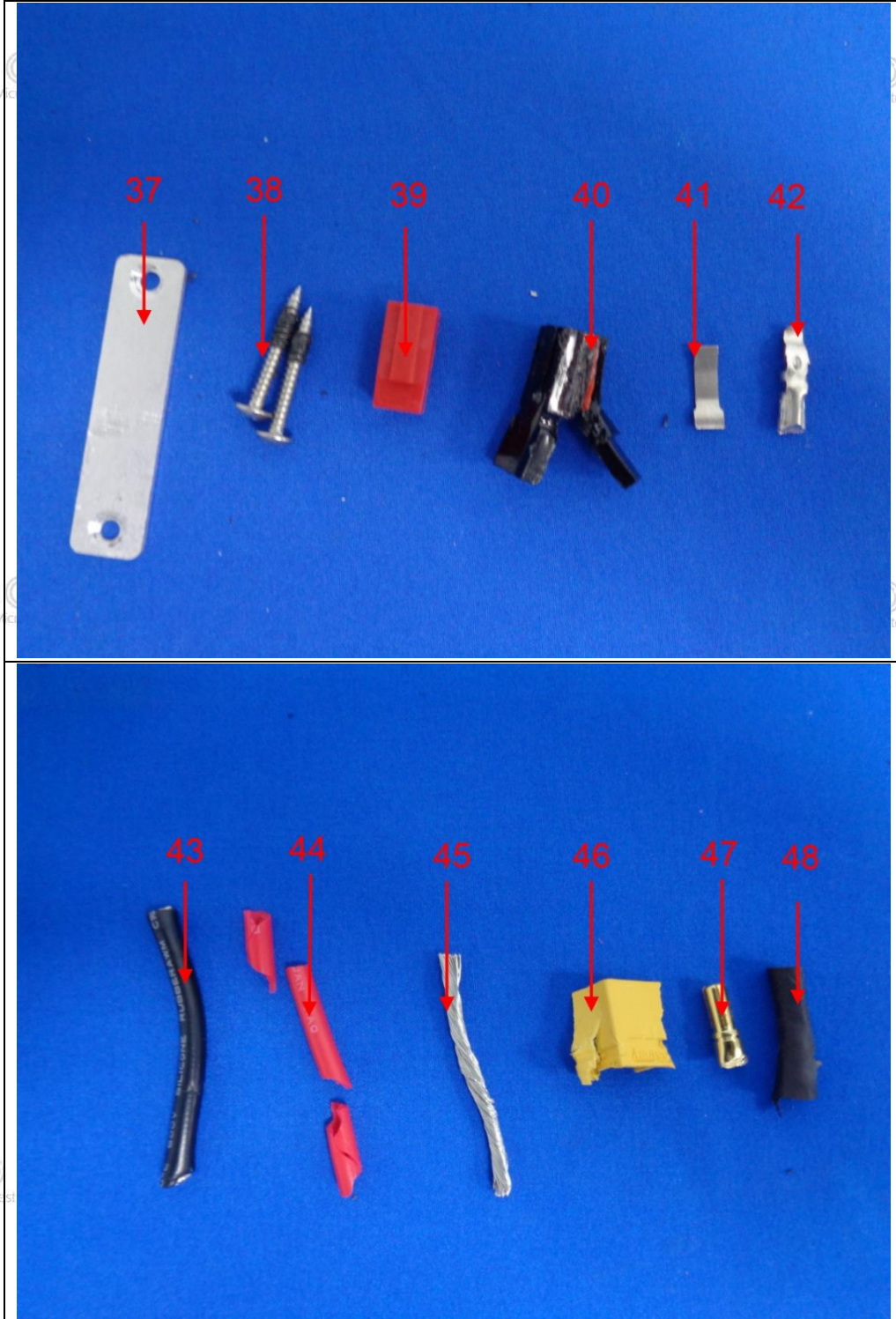
Pictures

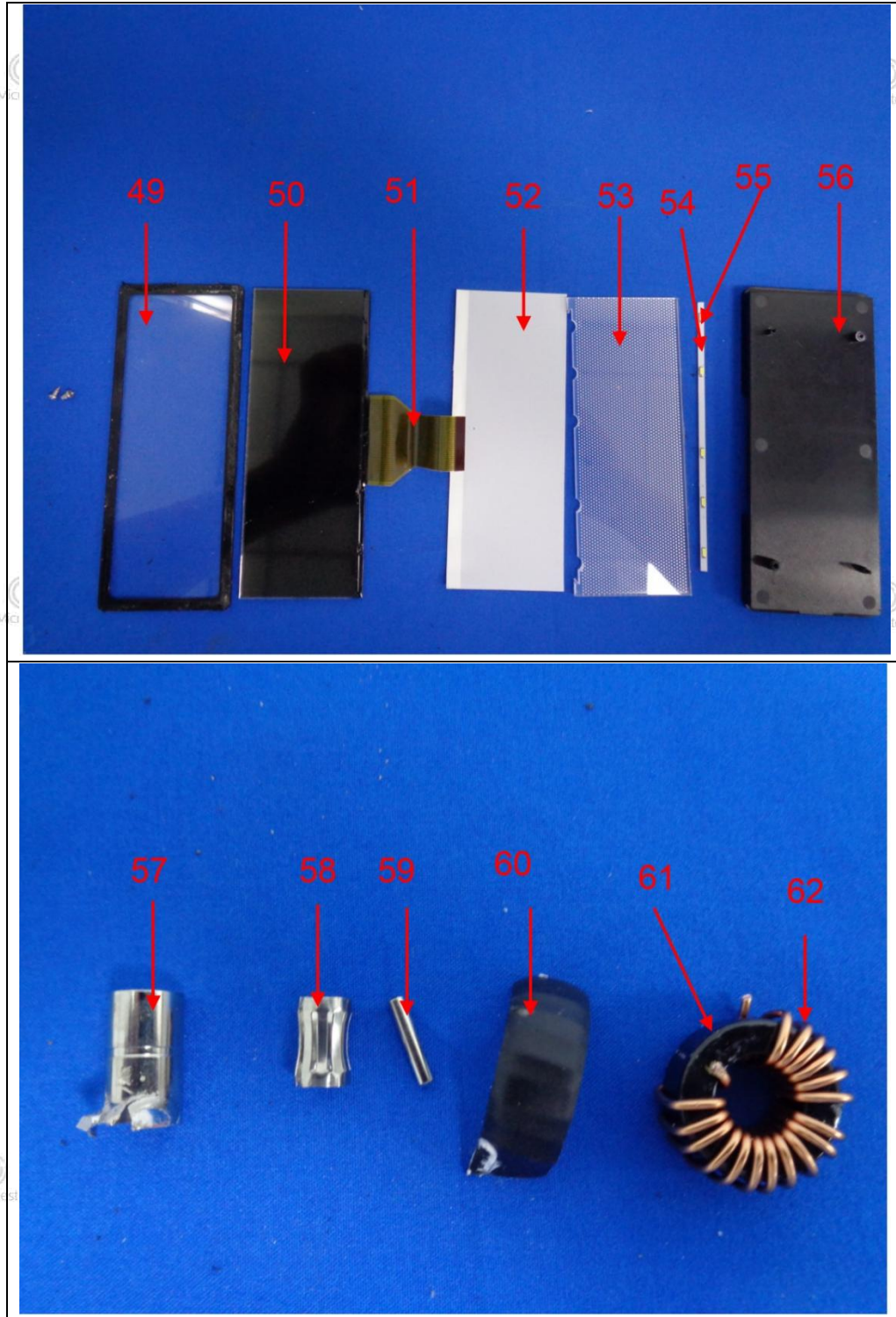


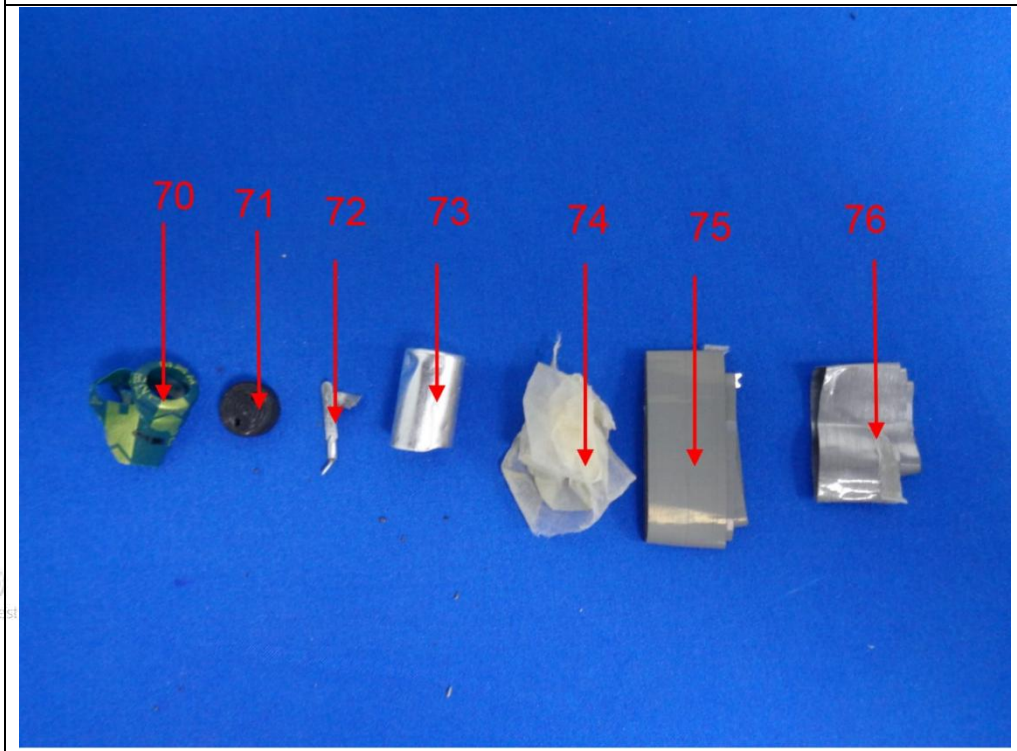
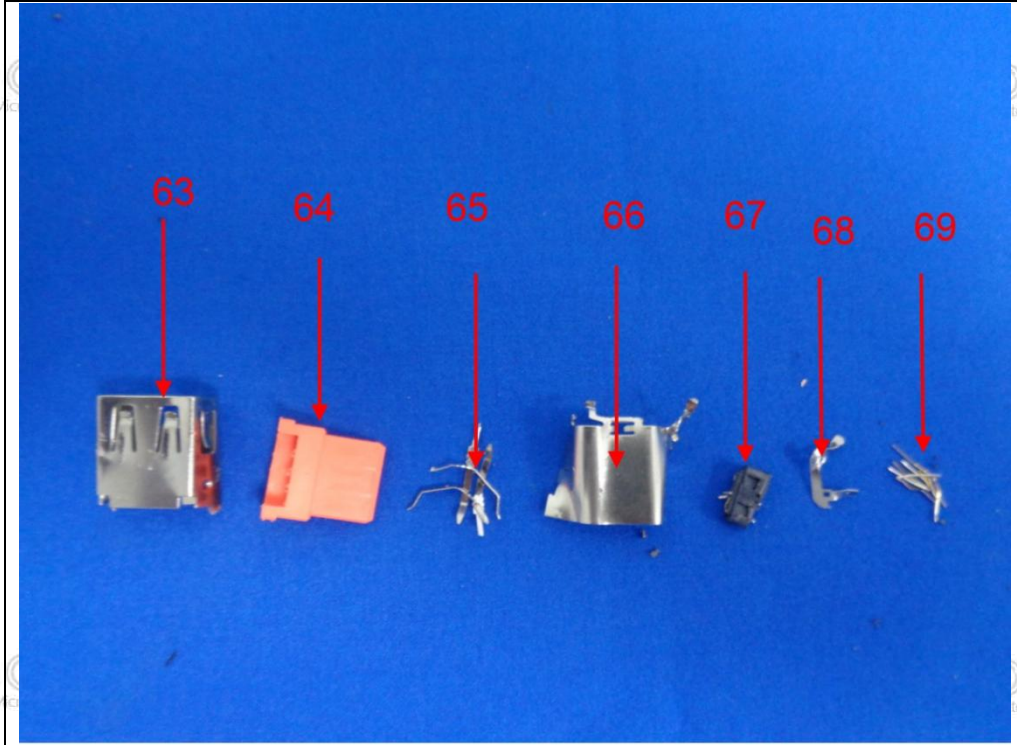


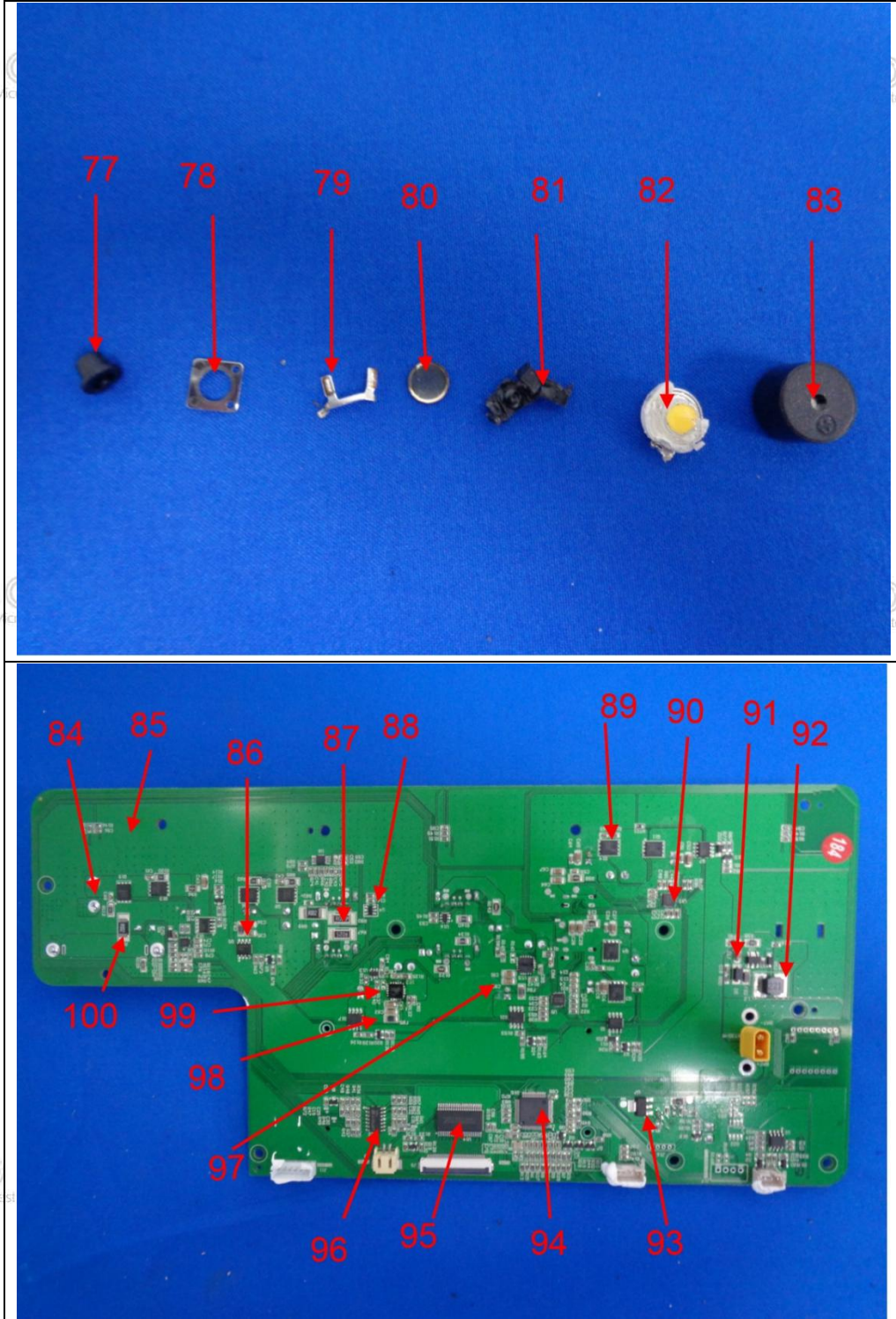


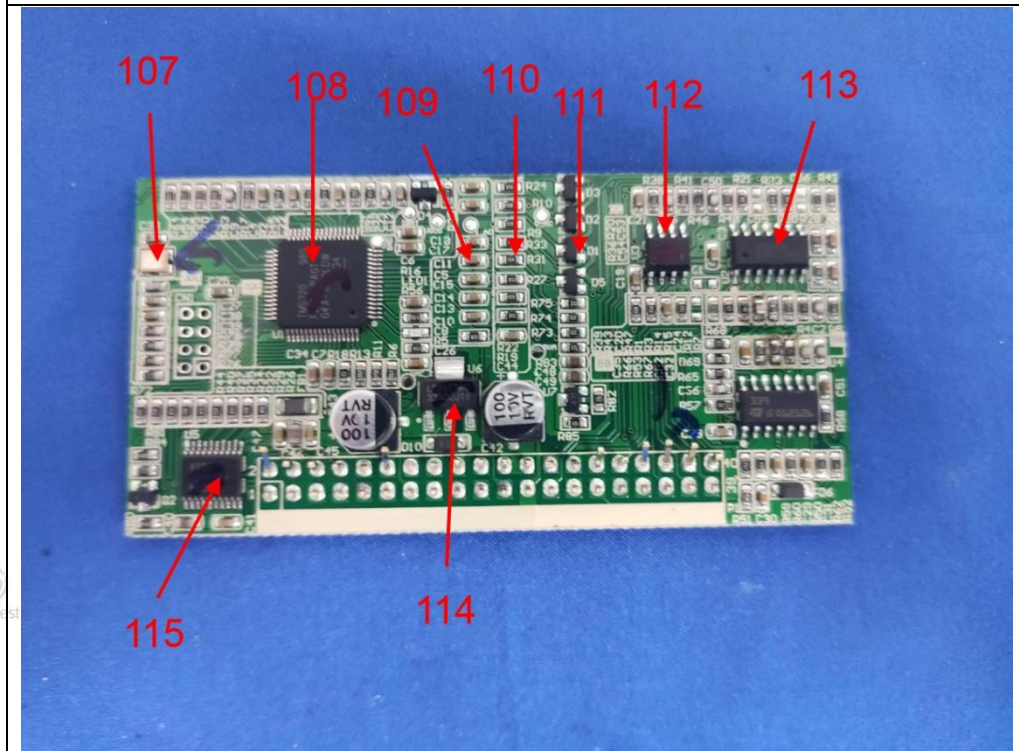
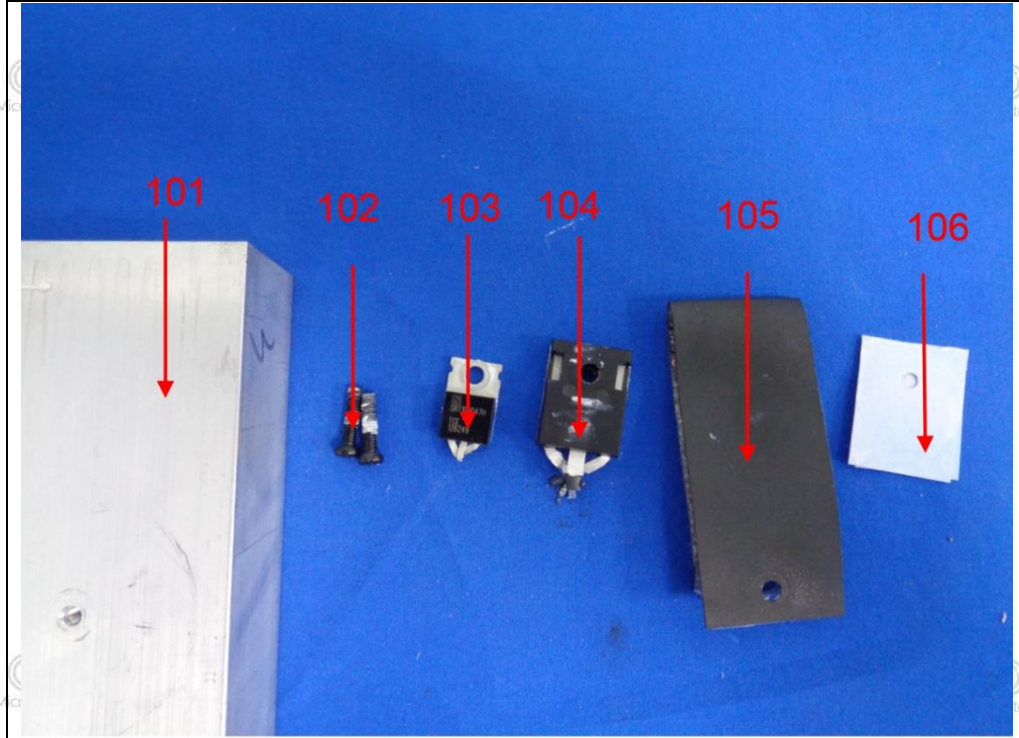


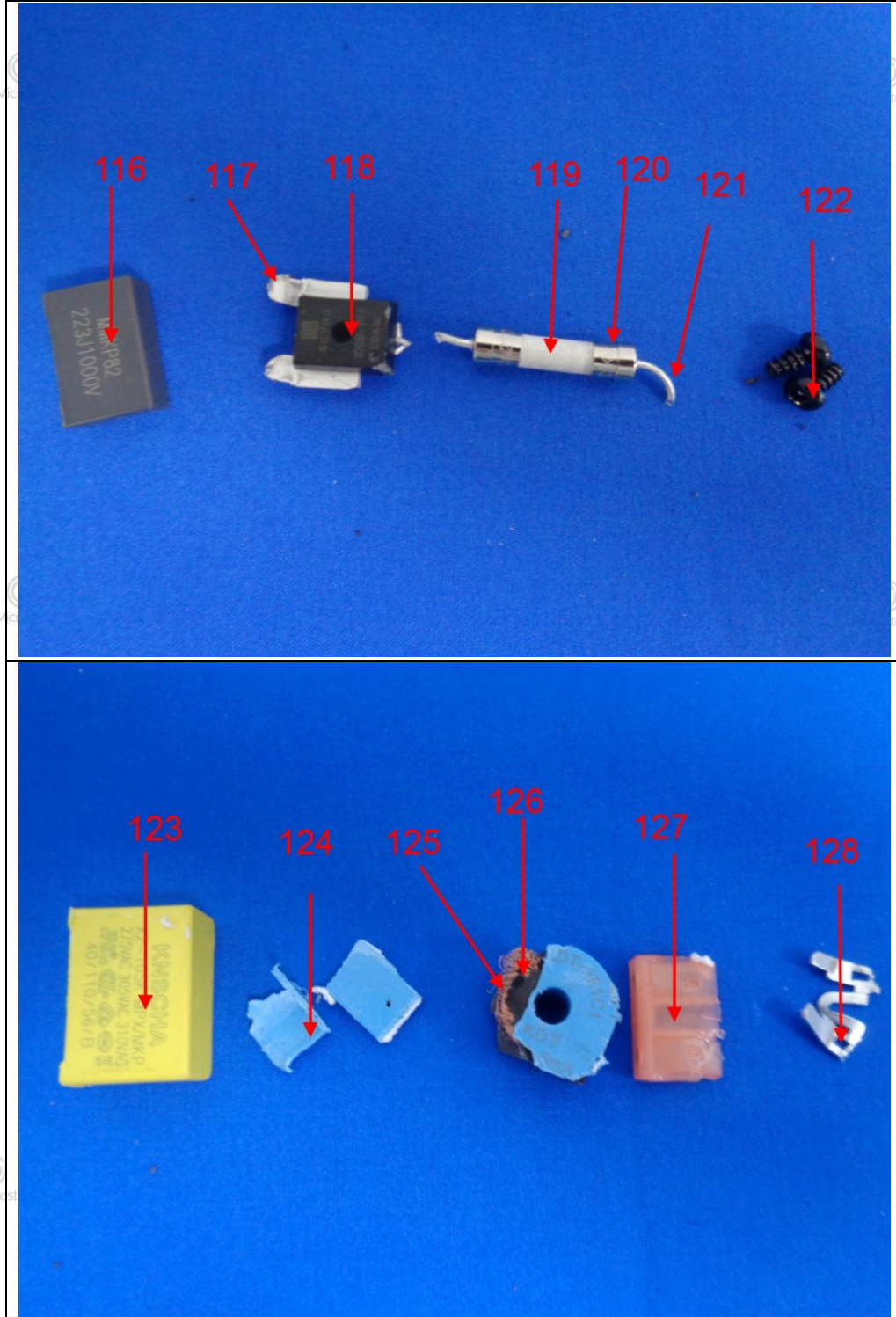


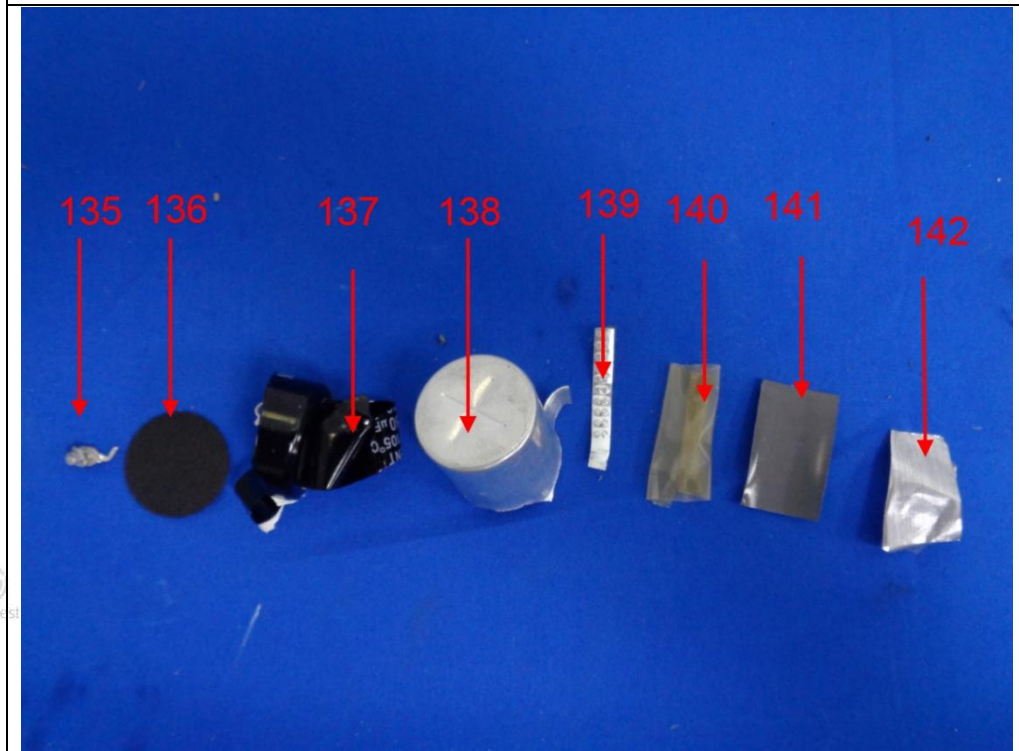
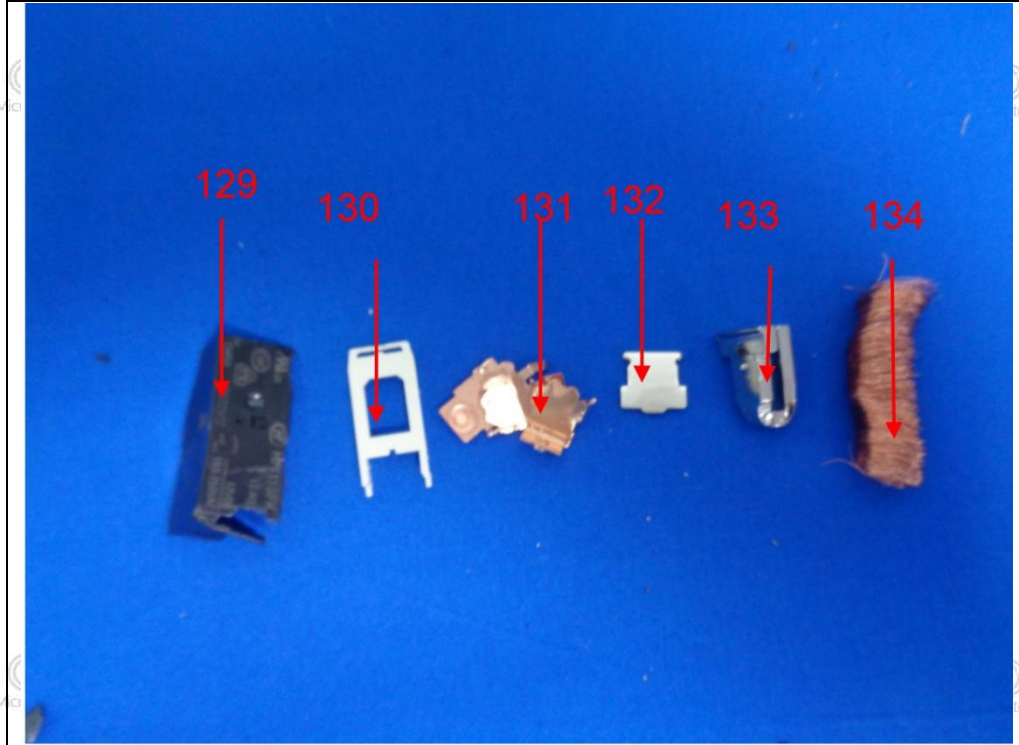


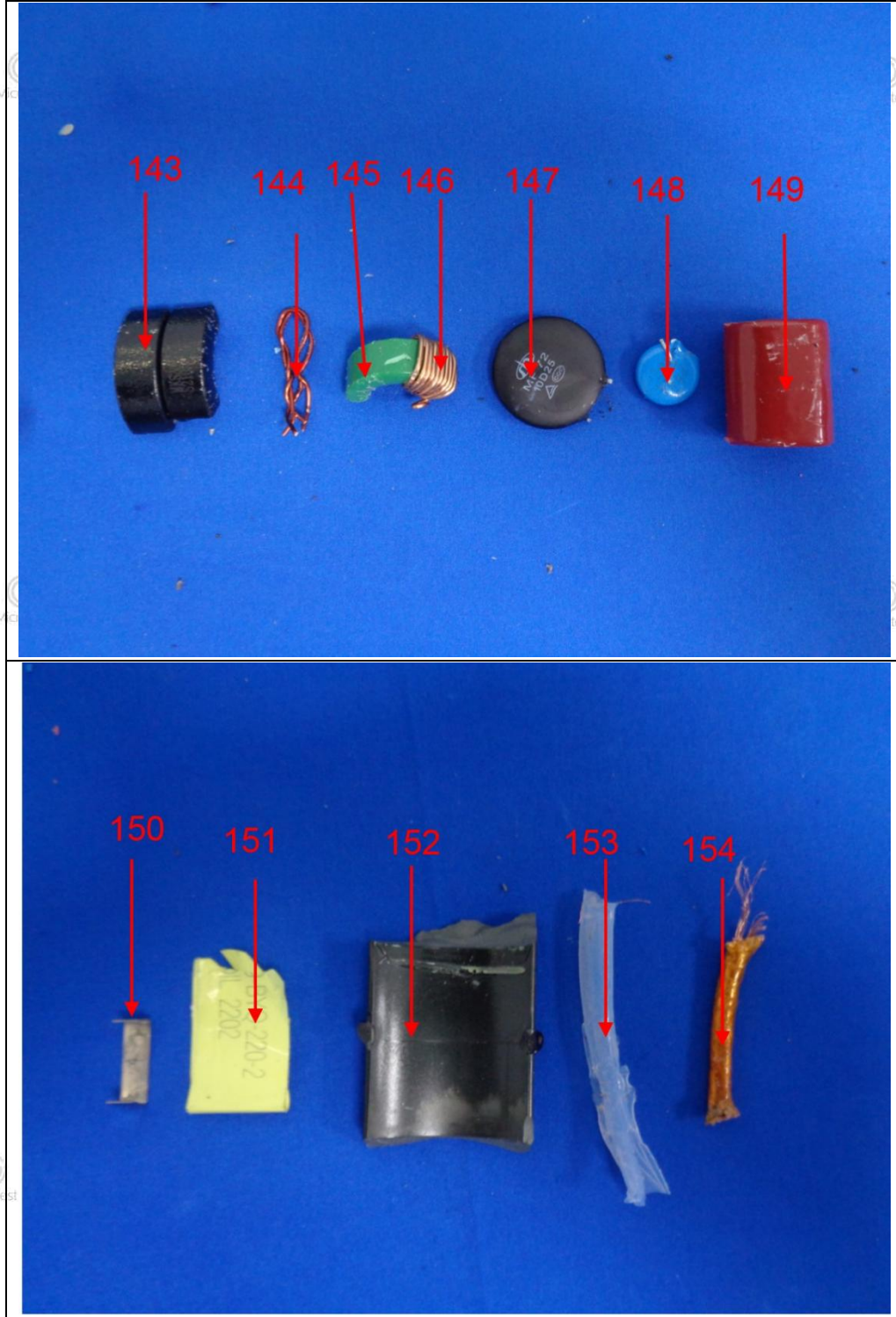


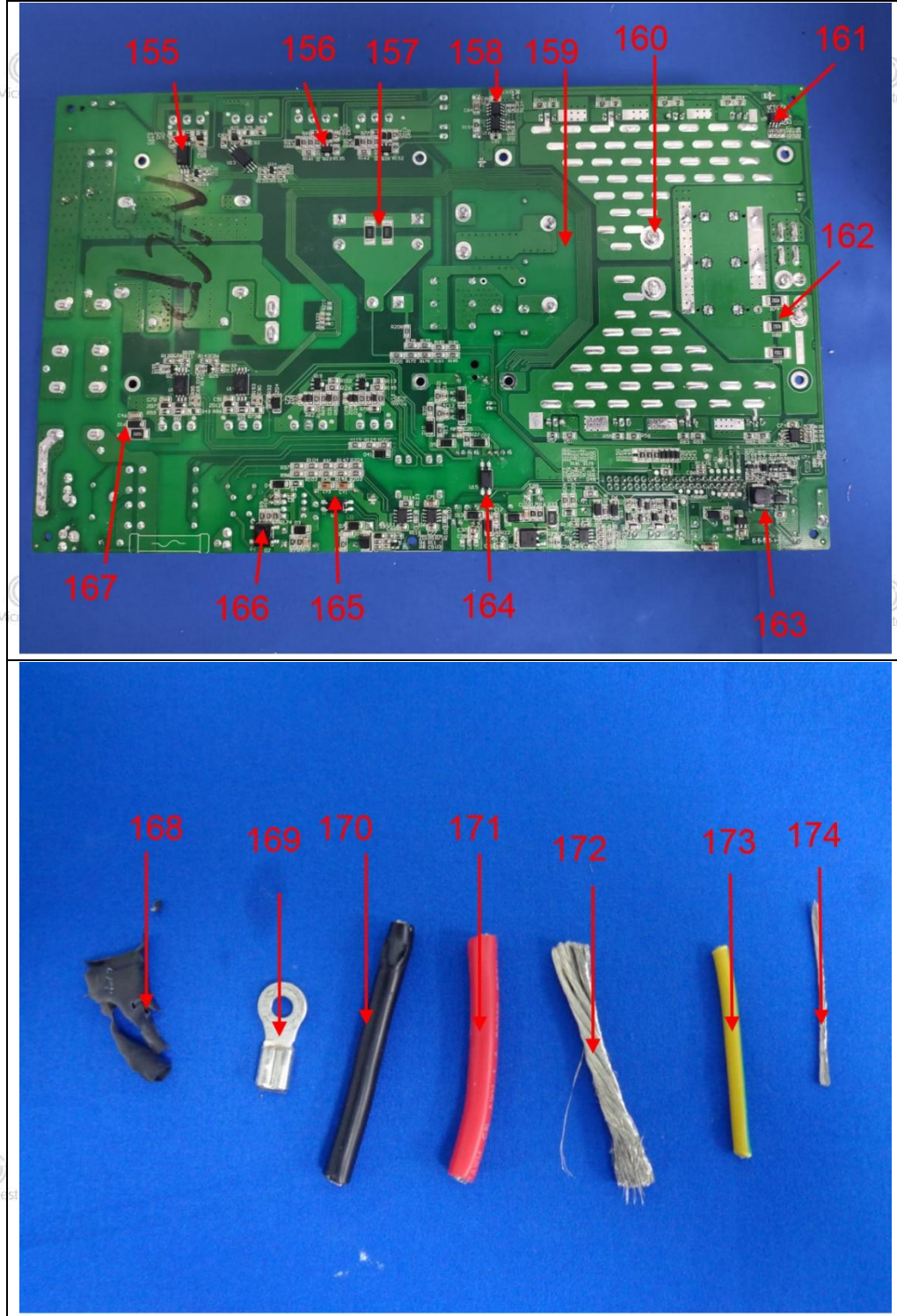


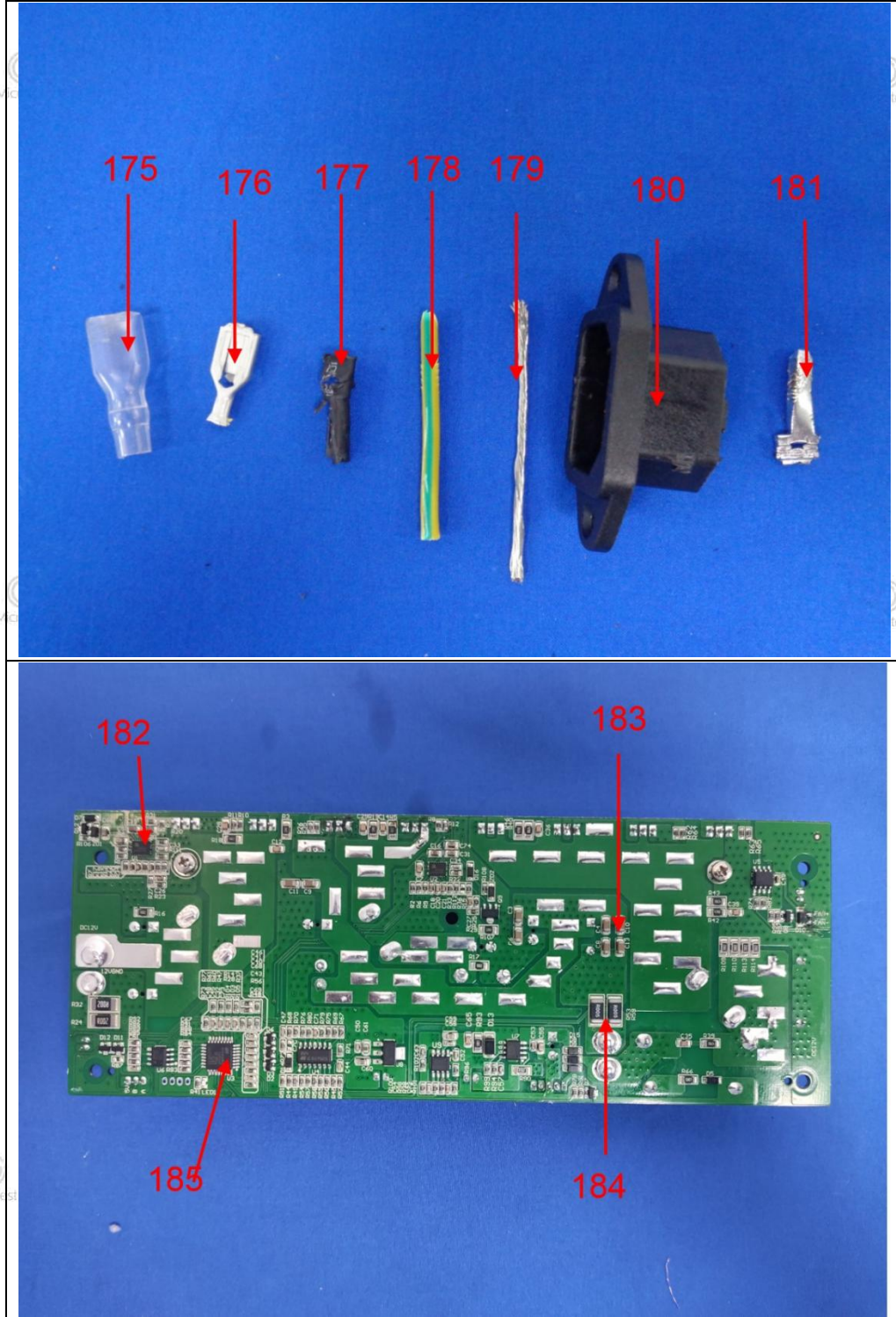


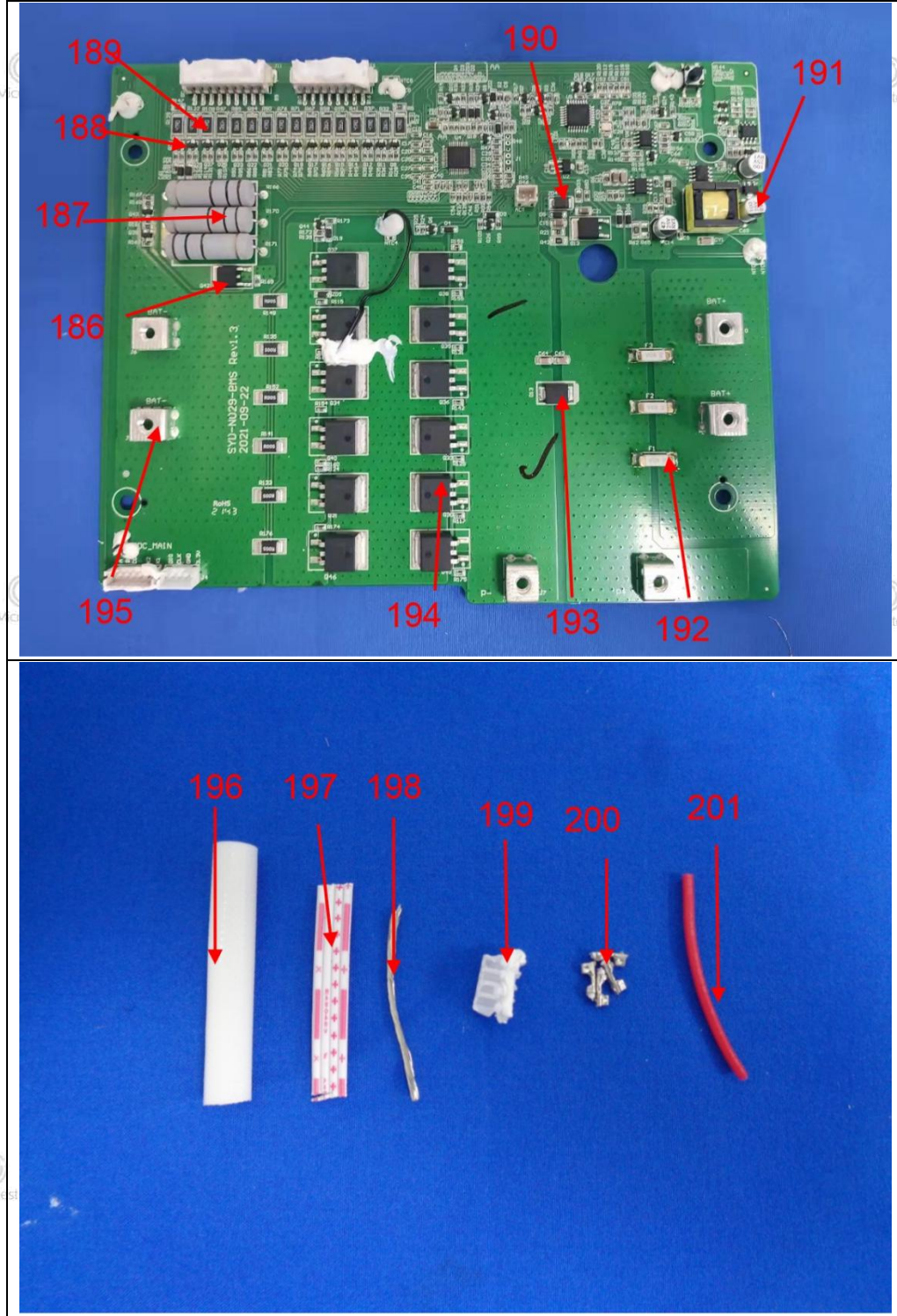


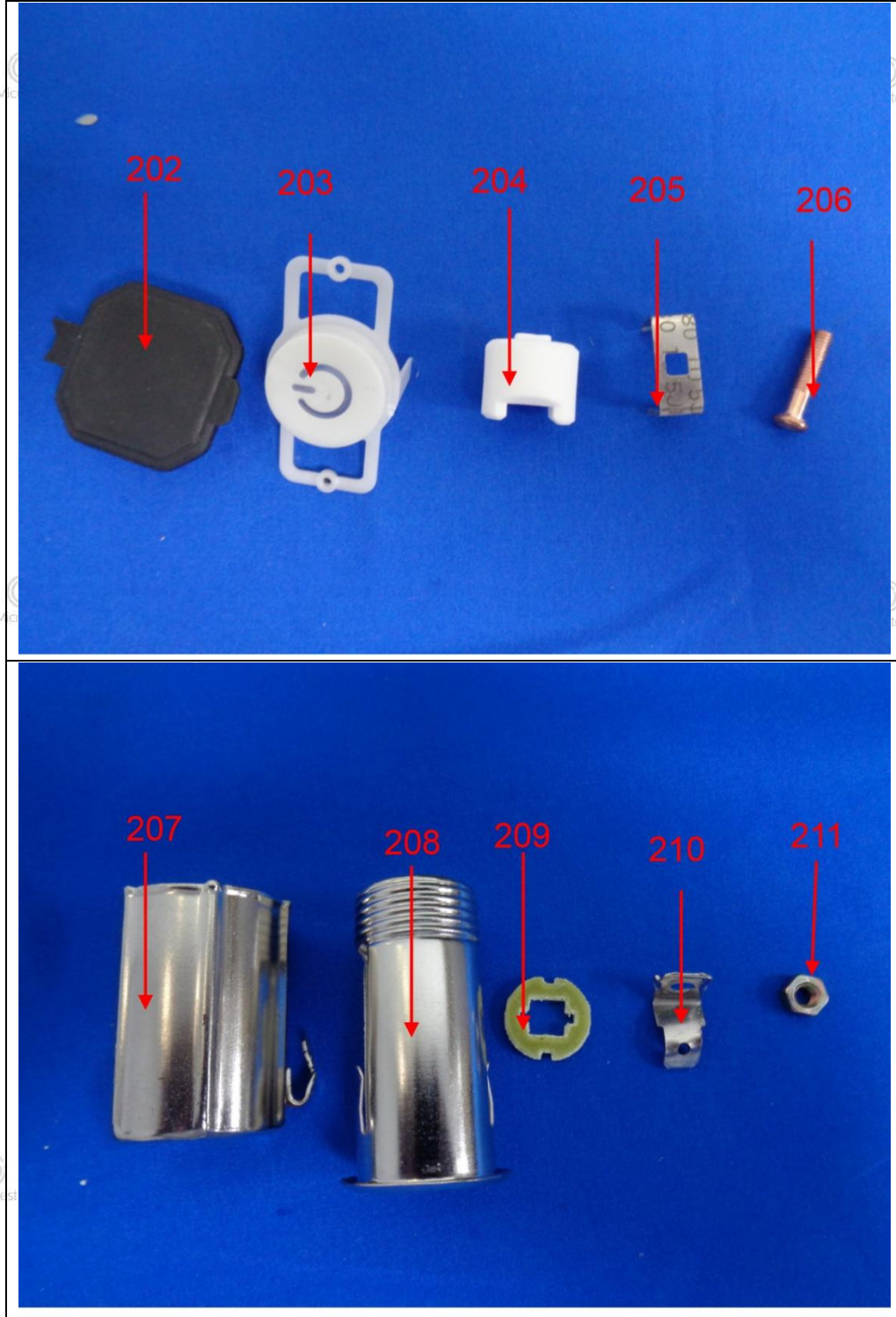


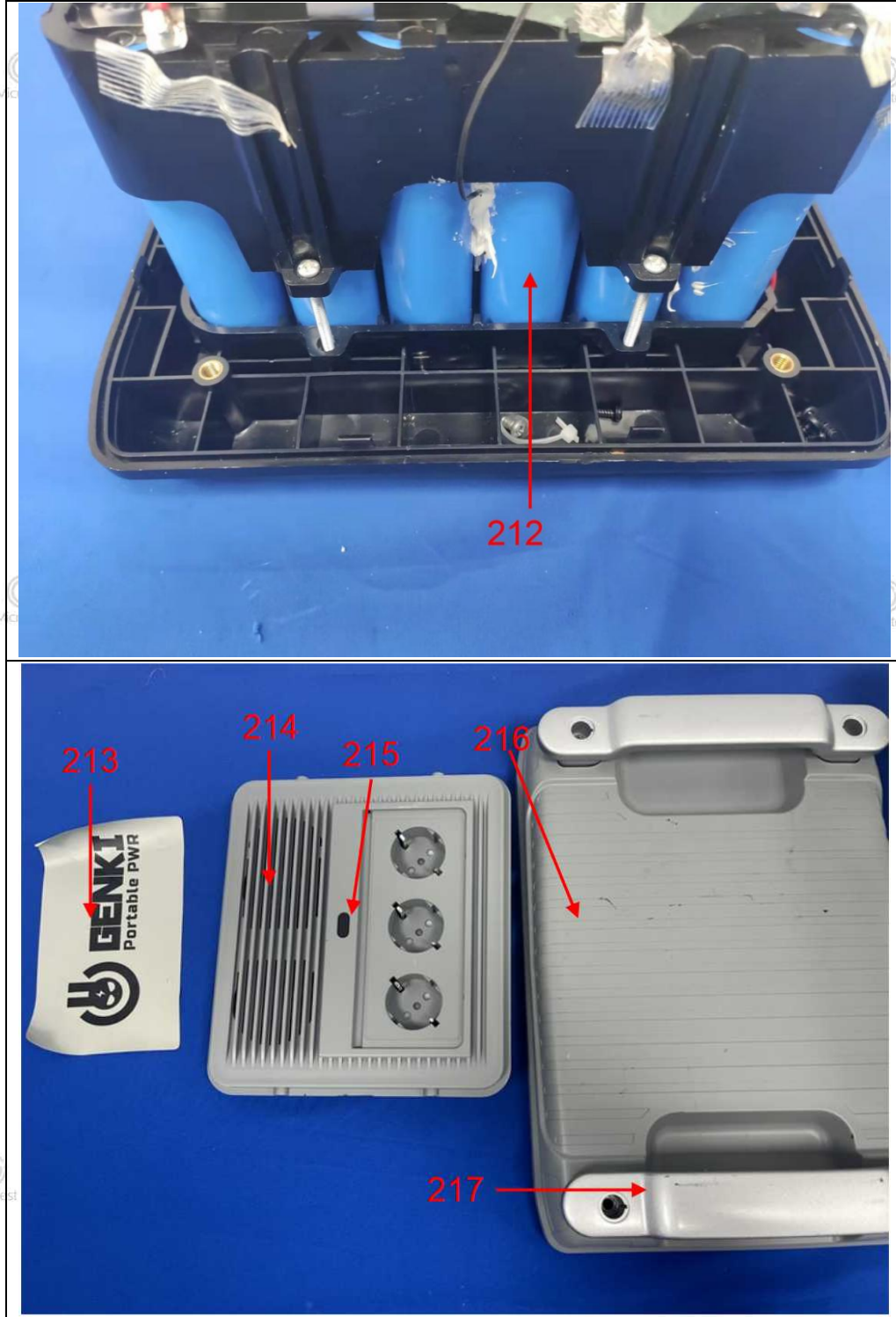


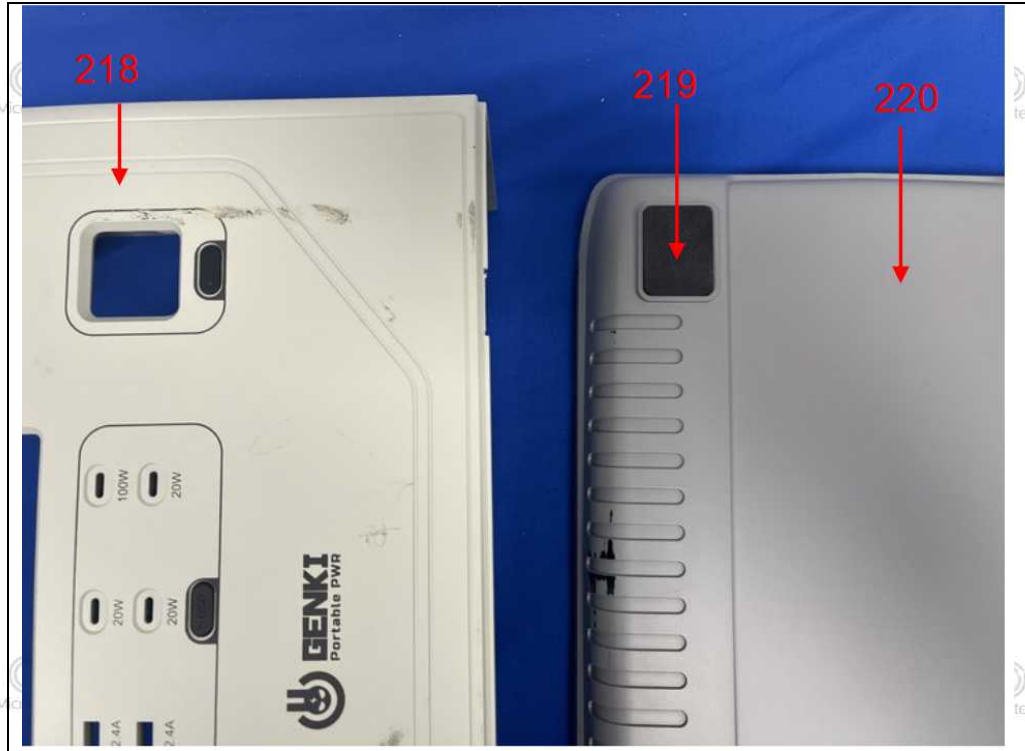












***** END *****