



Test Report



Report No.: MTi230109002-12C1



Date of Issue: April 19, 2023



Client: Dowell Technology Co., Ltd

Product: Portable Power Station

Test Type: Commissioned Inspection



Shenzhen Microtest Co., Ltd.

<http://www.mtitest.com>





Instructions



1. The report shall not be partially reproduced without the written consent of the Laboratory;



2. The test results of this report are only responsible for the samples submitted;

3. This report is invalid without the seal and signature of the laboratory;



4. This report is invalid if transferred, altered or tampered with in any form without authorization;

5. Any objection to this report shall be submitted to the laboratory within 15 days from the date of receipt of the report.



TEST REPORT

Report No.:MTi230109002-12C1

Page 1 of 52

Basic Information			
Client	Dowell Technology Co., Ltd		
Client Address	East Gaolang Road,Wuxi Economic Development Zone		
Manufacturer	Dowell Technology Co., Ltd		
Manufacturer Address	East Gaolang Road,Wuxi Economic Development Zone		
Factory	Dowell Technology Co., Ltd		
Factory Address	East Gaolang Road,Wuxi Economic Development Zone		
Sample Information			
Product	Portable Power Station	Model	GK-1200
Serial Model	/	Brand/ Trademark	
Sample Number	1	Sample Description	/
Testing Information			
Sample Receive Date	September 20, 2022	Sample Source	Customer provided
Test Specification	1. With reference to RoHS Directive 2011/65/EU and its amending (EU) 2015/863 (RoHS 2.0) . 2. With reference to EU Battery Directive (2006/66/EC & 2013/56/EU).		
Date of Tests	September 20, 2022 - September 27, 2022		
Test Address	Chemistry lab		
Test Results:	Please refer to next page(s).		
Conclusion:	1. The submitted sample(s) complied with the Lead, Cadmium, Mercury, Hexavalent Chromium, PBBs, PBDEs, DBP, BBP, DEHP, DIBP content requirement according to RoHS Directive 2011/65/EU and its amending (EU) 2015/863 (RoHS 2.0). 2. The submitted sample(s) complied with the Lead(Pb)、Cadmium(Cd)、Mercury(Hg) content in the submitted sample(s) in accordance with EU Battery Directive (2006/66/EC & 2013/56/EU).		
Compiled:	<i>Tobey Lin</i>	Reviewed:	<i>Sunshing Chen</i>
		Approved:	<i>Olivia Feng</i>

Test Method:

- 1. With reference to IEC 62321-3-1:2013, screening by XRF spectroscopy.**
- 2. Wet chemical test method.**
 - a. With reference to IEC 62321-5:2013, determination of Cadmium by ICP-OES.**
 - b. With reference to IEC 62321-5:2013, determination of Lead by ICP-OES.**
 - c. With reference to IEC 62321-4:2017, determination of Mercury by ICP-OES.**
 - d. With reference to IEC 62321-7-1:2015 & IEC 62321-7-2:2017, determination of Hexavalent chromium by Colorimetric method using UV-Vis.**
 - e. With reference to IEC 62321-6:2015, determination of PBBs and PBDEs by GC-MS.**
- 3. With reference to IEC 62321-8: 2017, determination of phthalates by GC-MS.**
- 4. With reference to IEC 62321-5:2013 and IEC 62321-4:2017, determination of Lead, Cadmium and Mercury in the battery by ICP-OES.**

Testing Result:
1. With reference to RoHS Directive (EU) 2015/863 amending 2011/65/EU to test Lead, Cadmium, Mercury, Hexavalent Chromium, PBBs, PBDEs, DBP, BBP, DEHP, DIBP

Part No.	Sample Description	Test item	XRF Result	Chemical Test (mg/kg)	Conclusion
1	Black plastic	Pb	BL	/	Pass
		Cd	BL	/	
		Hg	BL	/	
		Cr(Cr(VI))	BL	/	
		Br(PBBs&PBDEs)	BL	/	
		Phthalate(DBP\BBP \DEHP\DIBP)	--	N.D.	
2	Black plastic	Pb	BL	/	Pass
		Cd	BL	/	
		Hg	BL	/	
		Cr(Cr(VI))	BL	/	
		Br(PBBs&PBDEs)	BL	/	
		Phthalate(DBP\BBP \DEHP\DIBP)	--	N.D.	
3	Black label	Pb	BL	/	Pass
		Cd	BL	/	
		Hg	BL	/	
		Cr(Cr(VI))	BL	/	
		Br(PBBs&PBDEs)	BL	/	
		Phthalate(DBP\BBP \DEHP\DIBP)	--	N.D.	
4	Black soft plastic	Pb	BL	/	Pass
		Cd	BL	/	
		Hg	BL	/	
		Cr(Cr(VI))	BL	/	
		Br(PBBs&PBDEs)	BL	/	
		Phthalate(DBP\BBP \DEHP\DIBP)	--	N.D.	

TEST REPORT

Report No.:MTi230109002-12C1

Page 4 of 52

Part No.	Sample Description	Test item	XRF Result	Chemical Test (mg/kg)	Conclusion
5	Black soft plastic	Pb	BL	/	Pass
		Cd	BL	/	
		Hg	BL	/	
		Cr(Cr(VI))	BL	/	
		Br(PBBs&PBDEs)	BL	/	
		Phthalate(DBP\BBP \DEHP\DIBP)	--	N.D.	
6	Black soft plastic	Pb	BL	/	Pass
		Cd	BL	/	
		Hg	BL	/	
		Cr(Cr(VI))	BL	/	
		Br(PBBs&PBDEs)	BL	/	
		Phthalate(DBP\BBP \DEHP\DIBP)	--	N.D.	
7	Black plastic	Pb	BL	/	Pass
		Cd	BL	/	
		Hg	BL	/	
		Cr(Cr(VI))	BL	/	
		Br(PBBs&PBDEs)	BL	/	
		Phthalate(DBP\BBP \DEHP\DIBP)	--	N.D.	
8	Black plastic	Pb	BL	/	Pass
		Cd	BL	/	
		Hg	BL	/	
		Cr(Cr(VI))	BL	/	
		Br(PBBs&PBDEs)	BL	/	
		Phthalate(DBP\BBP \DEHP\DIBP)	--	N.D.	
9	Golden metal	Pb*	OL	24868*	Exempt
		Cd	BL	/	
		Hg	BL	/	
		Cr(Cr(VI))	BL	/	
		Br(PBBs&PBDEs)	--	--	
		Phthalate(DBP\BBP \DEHP\DIBP)	--	--	

TEST REPORT

Report No.:MTi230109002-12C1

Page 5 of 52

Part No.	Sample Description	Test item	XRF Result	Chemical Test (mg/kg)	Conclusion
10	Golden metal	Pb*	OL	25984*	Exempt
		Cd	BL	/	
		Hg	BL	/	
		Cr(Cr(VI))	BL	/	
		Br(PBBs&PBDEs)	--	--	
		Phthalate(DBP\BBP \DEHP\DIBP)	--	--	
11	Black plastic	Pb	BL	/	Pass
		Cd	BL	/	
		Hg	BL	/	
		Cr(Cr(VI))	BL	/	
		Br(PBBs&PBDEs)	BL	/	
		Phthalate(DBP\BBP \DEHP\DIBP)	--	N.D.	
12	Black plastic	Pb	BL	/	Pass
		Cd	BL	/	
		Hg	BL	/	
		Cr(Cr(VI))	BL	/	
		Br(PBBs&PBDEs)	BL	/	
		Phthalate(DBP\BBP \DEHP\DIBP)	--	N.D.	
13	Silvery metal	Pb	BL	/	Pass
		Cd	BL	/	
		Hg	BL	/	
		Cr(Cr(VI))	BL	/	
		Br(PBBs&PBDEs)	--	--	
		Phthalate(DBP\BBP \DEHP\DIBP)	--	--	
14	Silvery metal	Pb	BL	/	Pass
		Cd	BL	/	
		Hg	BL	/	
		Cr(Cr(VI))	BL	/	
		Br(PBBs&PBDEs)	--	--	
		Phthalate(DBP\BBP \DEHP\DIBP)	--	--	

TEST REPORT

Report No.:MTi230109002-12C1

Page 6 of 52

Part No.	Sample Description	Test item	XRF Result	Chemical Test (mg/kg)	Conclusion
15	Silvery metal	Pb	BL	/	Pass
		Cd	BL	/	
		Hg	BL	/	
		Cr(Cr(VI))	BL	/	
		Br(PBBs&PBDEs)	--	--	
		Phthalate(DBP\BBP \DEHP\DIBP)	--	--	
16	Copper metal	Pb	BL	/	Pass
		Cd	BL	/	
		Hg	BL	/	
		Cr(Cr(VI))	BL	/	
		Br(PBBs&PBDEs)	--	--	
		Phthalate(DBP\BBP \DEHP\DIBP)	--	--	
17	Silvery metal	Pb	BL	/	Pass
		Cd	BL	/	
		Hg	BL	/	
		Cr(Cr(VI))	BL	/	
		Br(PBBs&PBDEs)	--	--	
		Phthalate(DBP\BBP \DEHP\DIBP)	--	--	
18	Silvery metal	Pb	BL	/	Pass
		Cd	BL	/	
		Hg	BL	/	
		Cr(Cr(VI))	BL	/	
		Br(PBBs&PBDEs)	--	--	
		Phthalate(DBP\BBP \DEHP\DIBP)	--	--	
19	White plastic	Pb	BL	/	Pass
		Cd	BL	/	
		Hg	BL	/	
		Cr(Cr(VI))	BL	/	
		Br(PBBs&PBDEs)	BL	/	
		Phthalate(DBP\BBP \DEHP\DIBP)	--	N.D.	

TEST REPORT

Report No.:MTi230109002-12C1

Page 7 of 52

Part No.	Sample Description	Test item	XRF Result	Chemical Test (mg/kg)	Conclusion
20	Yellow plastic	Pb	BL	/	Pass
		Cd	BL	/	
		Hg	BL	/	
		Cr(Cr(VI))	BL	/	
		Br(PBBs&PBDEs)	X	N.D.	
		Phthalate(DBP\BBP \DEHP\DIBP)	--	N.D.	
21	Silvery metal	Pb	BL	/	Pass
		Cd	BL	/	
		Hg	BL	/	
		Cr(Cr(VI))	X	N.D.	
		Br(PBBs&PBDEs)	--	--	
		Phthalate(DBP\BBP \DEHP\DIBP)	--	--	
22	Copper metal screw	Pb	BL	/	Pass
		Cd	BL	/	
		Hg	BL	/	
		Cr(Cr(VI))	X	N.D.	
		Br(PBBs&PBDEs)	--	--	
		Phthalate(DBP\BBP \DEHP\DIBP)	--	--	
23	Golden metal	Pb	BL	/	Pass
		Cd	BL	/	
		Hg	BL	/	
		Cr(Cr(VI))	X	N.D.	
		Br(PBBs&PBDEs)	--	--	
		Phthalate(DBP\BBP \DEHP\DIBP)	--	--	
24	Black plastic	Pb	BL	/	Pass
		Cd	BL	/	
		Hg	BL	/	
		Cr(Cr(VI))	BL	/	
		Br(PBBs&PBDEs)	BL	/	
		Phthalate(DBP\BBP \DEHP\DIBP)	--	N.D.	

TEST REPORT

Report No.:MTi230109002-12C1

Page 8 of 52

Part No.	Sample Description	Test item	XRF Result	Chemical Test (mg/kg)	Conclusion
25	Black plastic	Pb	BL	/	Pass
		Cd	BL	/	
		Hg	BL	/	
		Cr(Cr(VI))	BL	/	
		Br(PBBs&PBDEs)	BL	/	
		Phthalate(DBP\BBP \DEHP\DIBP)	--	N.D.	
26	White plastic	Pb	BL	/	Pass
		Cd	BL	/	
		Hg	BL	/	
		Cr(Cr(VI))	BL	/	
		Br(PBBs&PBDEs)	BL	/	
		Phthalate(DBP\BBP \DEHP\DIBP)	--	N.D.	
27	Silvery metal	Pb	BL	/	Pass
		Cd	BL	/	
		Hg	BL	/	
		Cr(Cr(VI))	BL	/	
		Br(PBBs&PBDEs)	--	--	
		Phthalate(DBP\BBP \DEHP\DIBP)	--	--	
28	Silvery metal	Pb	BL	/	Pass
		Cd	BL	/	
		Hg	BL	/	
		Cr(Cr(VI))	BL	/	
		Br(PBBs&PBDEs)	--	--	
		Phthalate(DBP\BBP \DEHP\DIBP)	--	--	
29	Silvery metal spring	Pb	BL	/	Pass
		Cd	BL	/	
		Hg	BL	/	
		Cr(Cr(VI))	BL	/	
		Br(PBBs&PBDEs)	--	--	
		Phthalate(DBP\BBP \DEHP\DIBP)	--	--	

TEST REPORT

Report No.:MTi230109002-12C1

Page 9 of 52

Part No.	Sample Description	Test item	XRF Result	Chemical Test (mg/kg)	Conclusion
30	Black plastic	Pb	BL	/	Pass
		Cd	BL	/	
		Hg	BL	/	
		Cr(Cr(VI))	BL	/	
		Br(PBBs&PBDEs)	BL	/	
		Phthalate(DBP\BBP \DEHP\DIBP)	--	N.D.	
31	Black plastic	Pb	BL	/	Pass
		Cd	BL	/	
		Hg	BL	/	
		Cr(Cr(VI))	BL	/	
		Br(PBBs&PBDEs)	X	N.D.	
		Phthalate(DBP\BBP \DEHP\DIBP)	--	N.D.	
32	Red line skin	Pb	BL	/	Pass
		Cd	BL	/	
		Hg	BL	/	
		Cr(Cr(VI))	BL	/	
		Br(PBBs&PBDEs)	BL	/	
		Phthalate(DBP\BBP \DEHP\DIBP)	--	N.D.	
33	Black line skin	Pb	BL	/	Pass
		Cd	BL	/	
		Hg	BL	/	
		Cr(Cr(VI))	BL	/	
		Br(PBBs&PBDEs)	BL	/	
		Phthalate(DBP\BBP \DEHP\DIBP)	--	N.D.	
34	Translucent plastic	Pb	BL	/	Pass
		Cd	BL	/	
		Hg	BL	/	
		Cr(Cr(VI))	BL	/	
		Br(PBBs&PBDEs)	BL	/	
		Phthalate(DBP\BBP \DEHP\DIBP)	--	N.D.	

TEST REPORT

Report No.:MTi230109002-12C1

Page 10 of 52

Part No.	Sample Description	Test item	XRF Result	Chemical Test (mg/kg)	Conclusion
35	Silvery metal	Pb	BL	/	Pass
		Cd	BL	/	
		Hg	BL	/	
		Cr(Cr(VI))	BL	/	
		Br(PBBs&PBDEs)	--	--	
		Phthalate(DBP\BBP \DEHP\DIBP)	--	--	
36	Red line skin	Pb	BL	/	Pass
		Cd	BL	/	
		Hg	BL	/	
		Cr(Cr(VI))	BL	/	
		Br(PBBs&PBDEs)	BL	/	
		Phthalate(DBP\BBP \DEHP\DIBP)	--	N.D.	
37	Yellow line skin	Pb	BL	/	Pass
		Cd	BL	/	
		Hg	BL	/	
		Cr(Cr(VI))	BL	/	
		Br(PBBs&PBDEs)	BL	/	
		Phthalate(DBP\BBP \DEHP\DIBP)	--	N.D.	
38	Black line skin	Pb	BL	/	Pass
		Cd	BL	/	
		Hg	BL	/	
		Cr(Cr(VI))	BL	/	
		Br(PBBs&PBDEs)	BL	/	
		Phthalate(DBP\BBP \DEHP\DIBP)	--	N.D.	
39	White and Red line skin	Pb	BL	/	Pass
		Cd	BL	/	
		Hg	BL	/	
		Cr(Cr(VI))	BL	/	
		Br(PBBs&PBDEs)	BL	/	
		Phthalate(DBP\BBP \DEHP\DIBP)	--	N.D.	

TEST REPORT

Report No.:MTi230109002-12C1

Page 11 of 52

Part No.	Sample Description	Test item	XRF Result	Chemical Test (mg/kg)	Conclusion
40	Silvery metal	Pb	BL	/	Pass
		Cd	BL	/	
		Hg	BL	/	
		Cr(Cr(VI))	BL	/	
		Br(PBBs&PBDEs)	--	--	
		Phthalate(DBP\BBP \DEHP\DIBP)	--	--	
41	Black plastic	Pb	BL	/	Pass
		Cd	BL	/	
		Hg	BL	/	
		Cr(Cr(VI))	BL	/	
		Br(PBBs&PBDEs)	BL	/	
		Phthalate(DBP\BBP \DEHP\DIBP)	--	N.D.	
42	Blue plastic	Pb	BL	/	Pass
		Cd	BL	/	
		Hg	BL	/	
		Cr(Cr(VI))	BL	/	
		Br(PBBs&PBDEs)	BL	/	
		Phthalate(DBP\BBP \DEHP\DIBP)	--	N.D.	
43	Red plastic	Pb	BL	/	Pass
		Cd	BL	/	
		Hg	BL	/	
		Cr(Cr(VI))	BL	/	
		Br(PBBs&PBDEs)	BL	/	
		Phthalate(DBP\BBP \DEHP\DIBP)	--	N.D.	
44	Black line skin	Pb	BL	/	Pass
		Cd	BL	/	
		Hg	BL	/	
		Cr(Cr(VI))	BL	/	
		Br(PBBs&PBDEs)	BL	/	
		Phthalate(DBP\BBP \DEHP\DIBP)	--	N.D.	

TEST REPORT

Report No.:MTi230109002-12C1

Page 12 of 52

Part No.	Sample Description	Test item	XRF Result	Chemical Test (mg/kg)	Conclusion
45	Red line skin	Pb	BL	/	Pass
		Cd	BL	/	
		Hg	BL	/	
		Cr(Cr(VI))	BL	/	
		Br(PBBs&PBDEs)	BL	/	
		Phthalate(DBP\BBP \DEHP\DIBP)	--	N.D.	
46	Silvery metal line	Pb	BL	/	Pass
		Cd	BL	/	
		Hg	BL	/	
		Cr(Cr(VI))	BL	/	
		Br(PBBs&PBDEs)	--	--	
		Phthalate(DBP\BBP \DEHP\DIBP)	--	--	
47	Golden metal	Pb*	OL	12196*	Exempt
		Cd	BL	/	
		Hg	BL	/	
		Cr(Cr(VI))	BL	/	
		Br(PBBs&PBDEs)	--	--	
		Phthalate(DBP\BBP \DEHP\DIBP)	--	--	
48	Yellow plastic	Pb	BL	/	Pass
		Cd	BL	/	
		Hg	BL	/	
		Cr(Cr(VI))	BL	/	
		Br(PBBs&PBDEs)	X	N.D.	
		Phthalate(DBP\BBP \DEHP\DIBP)	--	N.D.	
49	Red line skin	Pb	BL	/	Pass
		Cd	BL	/	
		Hg	BL	/	
		Cr(Cr(VI))	BL	/	
		Br(PBBs&PBDEs)	BL	/	
		Phthalate(DBP\BBP \DEHP\DIBP)	--	N.D.	

TEST REPORT

Report No.:MTi230109002-12C1

Page 13 of 52

Part No.	Sample Description	Test item	XRF Result	Chemical Test (mg/kg)	Conclusion
50	Black line skin	Pb	BL	/	Pass
		Cd	BL	/	
		Hg	BL	/	
		Cr(Cr(VI))	BL	/	
		Br(PBBs&PBDEs)	BL	/	
		Phthalate(DBP\BBP \DEHP\DIBP)	--	N.D.	
51	Black line skin	Pb	BL	/	Pass
		Cd	BL	/	
		Hg	BL	/	
		Cr(Cr(VI))	BL	/	
		Br(PBBs&PBDEs)	BL	/	
		Phthalate(DBP\BBP \DEHP\DIBP)	--	N.D.	
52	Red line skin	Pb	BL	/	Pass
		Cd	BL	/	
		Hg	BL	/	
		Cr(Cr(VI))	BL	/	
		Br(PBBs&PBDEs)	BL	/	
		Phthalate(DBP\BBP \DEHP\DIBP)	--	N.D.	
53	Silvery metal	Pb	BL	/	Pass
		Cd	BL	/	
		Hg	BL	/	
		Cr(Cr(VI))	BL	/	
		Br(PBBs&PBDEs)	--	--	
		Phthalate(DBP\BBP \DEHP\DIBP)	--	--	
54	Black line skin	Pb	BL	/	Pass
		Cd	BL	/	
		Hg	BL	/	
		Cr(Cr(VI))	BL	/	
		Br(PBBs&PBDEs)	BL	/	
		Phthalate(DBP\BBP \DEHP\DIBP)	--	N.D.	

TEST REPORT

Report No.:MTi230109002-12C1

Page 14 of 52

Part No.	Sample Description	Test item	XRF Result	Chemical Test (mg/kg)	Conclusion
55	Red line skin	Pb	BL	/	Pass
		Cd	BL	/	
		Hg	BL	/	
		Cr(Cr(VI))	BL	/	
		Br(PBBs&PBDEs)	BL	/	
		Phthalate(DBP\BBP \DEHP\DIBP)	--	N.D.	
56	Translucent plastic	Pb	BL	/	Pass
		Cd	BL	/	
		Hg	BL	/	
		Cr(Cr(VI))	BL	/	
		Br(PBBs&PBDEs)	BL	/	
		Phthalate(DBP\BBP \DEHP\DIBP)	--	N.D.	
57	Viewing screen	Pb	BL	/	Pass
		Cd	BL	/	
		Hg	BL	/	
		Cr(Cr(VI))	BL	/	
		Br(PBBs&PBDEs)	BL	/	
		Phthalate(DBP\BBP \DEHP\DIBP)	--	N.D.	
58	Silvery metal	Pb	BL	/	Pass
		Cd	BL	/	
		Hg	BL	/	
		Cr(Cr(VI))	BL	/	
		Br(PBBs&PBDEs)	--	--	
		Phthalate(DBP\BBP \DEHP\DIBP)	--	--	
59	Black line skin	Pb	BL	/	Pass
		Cd	BL	/	
		Hg	BL	/	
		Cr(Cr(VI))	BL	/	
		Br(PBBs&PBDEs)	BL	/	
		Phthalate(DBP\BBP \DEHP\DIBP)	--	N.D.	

TEST REPORT

Report No.:MTi230109002-12C1

Page 15 of 52

Part No.	Sample Description	Test item	XRF Result	Chemical Test (mg/kg)	Conclusion
60	Silvery metal	Pb	BL	/	Pass
		Cd	BL	/	
		Hg	BL	/	
		Cr(Cr(VI))	BL	/	
		Br(PBBs&PBDEs)	--	--	
		Phthalate(DBP\BBP \DEHP\DIBP)	--	--	
61	Green capacitance	Pb	BL	/	Pass
		Cd	BL	/	
		Hg	BL	/	
		Cr(Cr(VI))	BL	/	
		Br(PBBs&PBDEs)	BL	/	
		Phthalate(DBP\BBP \DEHP\DIBP)	--	N.D.	
62	Inductor	Pb	BL	/	Pass
		Cd	BL	/	
		Hg	BL	/	
		Cr(Cr(VI))	BL	/	
		Br(PBBs&PBDEs)	BL	/	
		Phthalate(DBP\BBP \DEHP\DIBP)	--	N.D.	
63	Audion	Pb	BL	/	Pass
		Cd	BL	/	
		Hg	BL	/	
		Cr(Cr(VI))	BL	/	
		Br(PBBs&PBDEs)	BL	/	
		Phthalate(DBP\BBP \DEHP\DIBP)	--	N.D.	
64	Inductor	Pb	BL	/	Pass
		Cd	BL	/	
		Hg	BL	/	
		Cr(Cr(VI))	BL	/	
		Br(PBBs&PBDEs)	BL	/	
		Phthalate(DBP\BBP \DEHP\DIBP)	--	N.D.	

TEST REPORT

Report No.:MTi230109002-12C1

Page 16 of 52

Part No.	Sample Description	Test item	XRF Result	Chemical Test (mg/kg)	Conclusion
65	Inductor	Pb	BL	/	Pass
		Cd	BL	/	
		Hg	BL	/	
		Cr(Cr(VI))	BL	/	
		Br(PBBs&PBDEs)	BL	/	
		Phthalate(DBP\BBP \DEHP\DIBP)	--	N.D.	
66	Gray capacitance	Pb	BL	/	Pass
		Cd	BL	/	
		Hg	BL	/	
		Cr(Cr(VI))	BL	/	
		Br(PBBs&PBDEs)	BL	/	
		Phthalate(DBP\BBP \DEHP\DIBP)	--	N.D.	
67	Inductor	Pb	BL	/	Pass
		Cd	BL	/	
		Hg	BL	/	
		Cr(Cr(VI))	BL	/	
		Br(PBBs&PBDEs)	BL	/	
		Phthalate(DBP\BBP \DEHP\DIBP)	--	N.D.	
68	Black electron component	Pb	BL	/	Pass
		Cd	BL	/	
		Hg	BL	/	
		Cr(Cr(VI))	BL	/	
		Br(PBBs&PBDEs)	BL	/	
		Phthalate(DBP\BBP \DEHP\DIBP)	--	N.D.	
69	Resistance	Pb [#]	OL	1236 [#]	Exempt
		Cd	BL	/	
		Hg	BL	/	
		Cr(Cr(VI))	BL	/	
		Br(PBBs&PBDEs)	BL	/	
		Phthalate(DBP\BBP \DEHP\DIBP)	--	N.D.	

TEST REPORT

Report No.:MTi230109002-12C1

Page 17 of 52

Part No.	Sample Description	Test item	XRF Result	Chemical Test (mg/kg)	Conclusion
70	Yellow capacitance	Pb	BL	/	Pass
		Cd	BL	/	
		Hg	BL	/	
		Cr(Cr(VI))	BL	/	
		Br(PBBs&PBDEs)	BL	/	
		Phthalate(DBP\BBP \DEHP\DIBP)	--	N.D.	
71	Green PCB	Pb	BL	/	Pass
		Cd	BL	/	
		Hg	BL	/	
		Cr(Cr(VI))	BL	/	
		Br(PBBs&PBDEs)	BL	/	
		Phthalate(DBP\BBP \DEHP\DIBP)	--	N.D.	
72	Resistance	Pb [#]	OL	1413 [#]	Exempt
		Cd	BL	/	
		Hg	BL	/	
		Cr(Cr(VI))	BL	/	
		Br(PBBs&PBDEs)	BL	/	
		Phthalate(DBP\BBP \DEHP\DIBP)	--	N.D.	
73	Solder	Pb	BL	/	Pass
		Cd	BL	/	
		Hg	BL	/	
		Cr(Cr(VI))	BL	/	
		Br(PBBs&PBDEs)	--	--	
		Phthalate(DBP\BBP \DEHP\DIBP)	--	--	
74	Black IC	Pb	BL	/	Pass
		Cd	BL	/	
		Hg	BL	/	
		Cr(Cr(VI))	BL	/	
		Br(PBBs&PBDEs)	BL	/	
		Phthalate(DBP\BBP \DEHP\DIBP)	--	N.D.	

TEST REPORT

Report No.:MTi230109002-12C1

Page 18 of 52

Part No.	Sample Description	Test item	XRF Result	Chemical Test (mg/kg)	Conclusion
75	Black IC	Pb	BL	/	Pass
		Cd	BL	/	
		Hg	BL	/	
		Cr(Cr(VI))	BL	/	
		Br(PBBs&PBDEs)	BL	/	
		Phthalate(DBP\BBP \DEHP\DIBP)	--	N.D.	
76	Color ring resistance	Pb	BL	/	Pass
		Cd	BL	/	
		Hg	BL	/	
		Cr(Cr(VI))	BL	/	
		Br(PBBs&PBDEs)	BL	/	
		Phthalate(DBP\BBP \DEHP\DIBP)	--	N.D.	
77	Resistance	Pb	BL	/	Pass
		Cd	BL	/	
		Hg	BL	/	
		Cr(Cr(VI))	BL	/	
		Br(PBBs&PBDEs)	BL	/	
		Phthalate(DBP\BBP \DEHP\DIBP)	--	N.D.	
78	Black IC	Pb	BL	/	Pass
		Cd	BL	/	
		Hg	BL	/	
		Cr(Cr(VI))	BL	/	
		Br(PBBs&PBDEs)	BL	/	
		Phthalate(DBP\BBP \DEHP\DIBP)	--	N.D.	
79	Crystal oscillator	Pb	BL	/	Pass
		Cd	BL	/	
		Hg	BL	/	
		Cr(Cr(VI))	BL	/	
		Br(PBBs&PBDEs)	BL	/	
		Phthalate(DBP\BBP \DEHP\DIBP)	--	N.D.	

TEST REPORT

Report No.:MTi230109002-12C1

Page 19 of 52

Part No.	Sample Description	Test item	XRF Result	Chemical Test (mg/kg)	Conclusion
80	Inductor	Pb	BL	/	Pass
		Cd	BL	/	
		Hg	BL	/	
		Cr(Cr(VI))	BL	/	
		Br(PBBs&PBDEs)	BL	/	
		Phthalate(DBP\BBP \DEHP\DIBP)	--	N.D.	
81	Fuse	Pb	BL	/	Pass
		Cd	BL	/	
		Hg	BL	/	
		Cr(Cr(VI))	BL	/	
		Br(PBBs&PBDEs)	BL	/	
		Phthalate(DBP\BBP \DEHP\DIBP)	--	N.D.	
82	Diode	Pb	BL	/	Pass
		Cd	BL	/	
		Hg	BL	/	
		Cr(Cr(VI))	BL	/	
		Br(PBBs&PBDEs)	BL	/	
		Phthalate(DBP\BBP \DEHP\DIBP)	--	N.D.	
83	Silvery metal	Pb	BL	/	Pass
		Cd	BL	/	
		Hg	BL	/	
		Cr(Cr(VI))	BL	/	
		Br(PBBs&PBDEs)	BL	/	
		Phthalate(DBP\BBP \DEHP\DIBP)	--	N.D.	
84	Resistance	Pb	BL	/	Pass
		Cd	BL	/	
		Hg	BL	/	
		Cr(Cr(VI))	BL	/	
		Br(PBBs&PBDEs)	BL	/	
		Phthalate(DBP\BBP \DEHP\DIBP)	--	N.D.	

TEST REPORT

Report No.:MTi230109002-12C1

Page 20 of 52

Part No.	Sample Description	Test item	XRF Result	Chemical Test (mg/kg)	Conclusion
85	Switch	Pb	BL	/	Pass
		Cd	BL	/	
		Hg	BL	/	
		Cr(Cr(VI))	BL	/	
		Br(PBBs&PBDEs)	BL	/	
		Phthalate(DBP\BBP \DEHP\DIBP)	--	N.D.	
86	LED	Pb	BL	/	Pass
		Cd	BL	/	
		Hg	BL	/	
		Cr(Cr(VI))	BL	/	
		Br(PBBs&PBDEs)	BL	/	
		Phthalate(DBP\BBP \DEHP\DIBP)	--	N.D.	
87	Inductor	Pb	BL	/	Pass
		Cd	BL	/	
		Hg	BL	/	
		Cr(Cr(VI))	BL	/	
		Br(PBBs&PBDEs)	BL	/	
		Phthalate(DBP\BBP \DEHP\DIBP)	--	N.D.	
88	Silvery metal	Pb	BL	/	Pass
		Cd	BL	/	
		Hg	BL	/	
		Cr(Cr(VI))	BL	/	
		Br(PBBs&PBDEs)	--	--	
		Phthalate(DBP\BBP \DEHP\DIBP)	--	--	
89	Silvery metal	Pb	BL	/	Pass
		Cd	BL	/	
		Hg	BL	/	
		Cr(Cr(VI))	BL	/	
		Br(PBBs&PBDEs)	--	--	
		Phthalate(DBP\BBP \DEHP\DIBP)	--	--	

TEST REPORT

Report No.:MTi230109002-12C1

Page 21 of 52

Part No.	Sample Description	Test item	XRF Result	Chemical Test (mg/kg)	Conclusion
90	Silvery metal	Pb	BL	/	Pass
		Cd	BL	/	
		Hg	BL	/	
		Cr(Cr(VI))	BL	/	
		Br(PBBs&PBDEs)	--	--	
		Phthalate(DBP\BBP \DEHP\DIBP)	--	--	
91	Buzzer	Pb	BL	/	Pass
		Cd	BL	/	
		Hg	BL	/	
		Cr(Cr(VI))	BL	/	
		Br(PBBs&PBDEs)	BL	/	
		Phthalate(DBP\BBP \DEHP\DIBP)	--	N.D.	
92	Resistance	Pb#	OL	1631#	Exempt
		Cd	BL	/	
		Hg	BL	/	
		Cr(Cr(VI))	BL	/	
		Br(PBBs&PBDEs)	BL	/	
		Phthalate(DBP\BBP \DEHP\DIBP)	--	N.D.	
93	Black IC	Pb	BL	/	Pass
		Cd	BL	/	
		Hg	BL	/	
		Cr(Cr(VI))	BL	/	
		Br(PBBs&PBDEs)	BL	/	
		Phthalate(DBP\BBP \DEHP\DIBP)	--	N.D.	
94	Black IC	Pb	BL	/	Pass
		Cd	BL	/	
		Hg	BL	/	
		Cr(Cr(VI))	BL	/	
		Br(PBBs&PBDEs)	BL	/	
		Phthalate(DBP\BBP \DEHP\DIBP)	--	N.D.	

TEST REPORT

Report No.:MTi230109002-12C1

Page 22 of 52

Part No.	Sample Description	Test item	XRF Result	Chemical Test (mg/kg)	Conclusion
95	Inductor	Pb	BL	/	Pass
		Cd	BL	/	
		Hg	BL	/	
		Cr(Cr(VI))	BL	/	
		Br(PBBs&PBDEs)	BL	/	
		Phthalate(DBP\BBP \DEHP\DIBP)	--	N.D.	
96	Black electron component	Pb	BL	/	Pass
		Cd	BL	/	
		Hg	BL	/	
		Cr(Cr(VI))	BL	/	
		Br(PBBs&PBDEs)	BL	/	
		Phthalate(DBP\BBP \DEHP\DIBP)	--	N.D.	
97	Blue electron component	Pb	BL	/	Pass
		Cd	BL	/	
		Hg	BL	/	
		Cr(Cr(VI))	BL	/	
		Br(PBBs&PBDEs)	BL	/	
		Phthalate(DBP\BBP \DEHP\DIBP)	--	N.D.	
98	Yellow condensance	Pb	BL	/	Pass
		Cd	BL	/	
		Hg	BL	/	
		Cr(Cr(VI))	BL	/	
		Br(PBBs&PBDEs)	BL	/	
		Phthalate(DBP\BBP \DEHP\DIBP)	--	N.D.	
99	Yellow condensance	Pb	BL	/	Pass
		Cd	BL	/	
		Hg	BL	/	
		Cr(Cr(VI))	BL	/	
		Br(PBBs&PBDEs)	BL	/	
		Phthalate(DBP\BBP \DEHP\DIBP)	--	N.D.	

TEST REPORT

Report No.:MTi230109002-12C1

Page 23 of 52

Part No.	Sample Description	Test item	XRF Result	Chemical Test (mg/kg)	Conclusion
100	Inductor	Pb	BL	/	Pass
		Cd	BL	/	
		Hg	BL	/	
		Cr(Cr(VI))	BL	/	
		Br(PBBs&PBDEs)	BL	/	
		Phthalate(DBP\BBP \DEHP\DIBP)	--	N.D.	
101	Inductor	Pb	BL	/	Pass
		Cd	BL	/	
		Hg	BL	/	
		Cr(Cr(VI))	BL	/	
		Br(PBBs&PBDEs)	BL	/	
		Phthalate(DBP\BBP \DEHP\DIBP)	--	N.D.	
102	Inductor	Pb	BL	/	Pass
		Cd	BL	/	
		Hg	BL	/	
		Cr(Cr(VI))	BL	/	
		Br(PBBs&PBDEs)	BL	/	
		Phthalate(DBP\BBP \DEHP\DIBP)	--	N.D.	
103	Inductor	Pb	BL	/	Pass
		Cd	BL	/	
		Hg	BL	/	
		Cr(Cr(VI))	BL	/	
		Br(PBBs&PBDEs)	BL	/	
		Phthalate(DBP\BBP \DEHP\DIBP)	--	N.D.	
104	Black capacitance	Pb	BL	/	Pass
		Cd	BL	/	
		Hg	BL	/	
		Cr(Cr(VI))	BL	/	
		Br(PBBs&PBDEs)	BL	/	
		Phthalate(DBP\BBP \DEHP\DIBP)	--	N.D.	

TEST REPORT

Report No.:MTi230109002-12C1

Page 24 of 52

Part No.	Sample Description	Test item	XRF Result	Chemical Test (mg/kg)	Conclusion
105	Blue ceramic capacitor	Pb	BL	/	Pass
		Cd	BL	/	
		Hg	BL	/	
		Cr(Cr(VI))	BL	/	
		Br(PBBs&PBDEs)	--	--	
		Phthalate(DBP\BBP \DEHP\DIBP)	--	--	
106	Black capacitance	Pb	BL	/	Pass
		Cd	BL	/	
		Hg	BL	/	
		Cr(Cr(VI))	BL	/	
		Br(PBBs&PBDEs)	BL	/	
		Phthalate(DBP\BBP \DEHP\DIBP)	--	N.D.	
107	Red ceramic capacitance	Pb	BL	/	Pass
		Cd	BL	/	
		Hg	BL	/	
		Cr(Cr(VI))	BL	/	
		Br(PBBs&PBDEs)	--	--	
		Phthalate(DBP\BBP \DEHP\DIBP)	--	--	
108	Inductor	Pb	BL	/	Pass
		Cd	BL	/	
		Hg	BL	/	
		Cr(Cr(VI))	BL	/	
		Br(PBBs&PBDEs)	BL	/	
		Phthalate(DBP\BBP \DEHP\DIBP)	--	N.D.	
109	Black electron component	Pb	BL	/	Pass
		Cd	BL	/	
		Hg	BL	/	
		Cr(Cr(VI))	BL	/	
		Br(PBBs&PBDEs)	BL	/	
		Phthalate(DBP\BBP \DEHP\DIBP)	--	N.D.	

TEST REPORT

Report No.:MTi230109002-12C1

Page 25 of 52

Part No.	Sample Description	Test item	XRF Result	Chemical Test (mg/kg)	Conclusion
110	Green Inductor	Pb	BL	/	Pass
		Cd	BL	/	
		Hg	BL	/	
		Cr(Cr(VI))	BL	/	
		Br(PBBs&PBDEs)	BL	/	
		Phthalate(DBP\BBP \DEHP\DIBP)	--	N.D.	
111	Black IC	Pb	BL	/	Pass
		Cd	BL	/	
		Hg	BL	/	
		Cr(Cr(VI))	BL	/	
		Br(PBBs&PBDEs)	BL	/	
		Phthalate(DBP\BBP \DEHP\DIBP)	--	N.D.	
112	Diode	Pb	BL	/	Pass
		Cd	BL	/	
		Hg	BL	/	
		Cr(Cr(VI))	BL	/	
		Br(PBBs&PBDEs)	BL	/	
		Phthalate(DBP\BBP \DEHP\DIBP)	--	N.D.	
113	Black IC	Pb	BL	/	Pass
		Cd	BL	/	
		Hg	BL	/	
		Cr(Cr(VI))	BL	/	
		Br(PBBs&PBDEs)	BL	/	
		Phthalate(DBP\BBP \DEHP\DIBP)	--	N.D.	
114	Yellow capacitance	Pb	BL	/	Pass
		Cd	BL	/	
		Hg	BL	/	
		Cr(Cr(VI))	BL	/	
		Br(PBBs&PBDEs)	BL	/	
		Phthalate(DBP\BBP \DEHP\DIBP)	--	N.D.	

TEST REPORT

Report No.:MTi230109002-12C1

Page 26 of 52

Part No.	Sample Description	Test item	XRF Result	Chemical Test (mg/kg)	Conclusion
115	Diode	Pb	BL	/	Pass
		Cd	BL	/	
		Hg	BL	/	
		Cr(Cr(VI))	BL	/	
		Br(PBBs&PBDEs)	BL	/	
		Phthalate(DBP\BBP \DEHP\DIBP)	--	N.D.	
116	Resistance	Pb	BL	/	Pass
		Cd	BL	/	
		Hg	BL	/	
		Cr(Cr(VI))	BL	/	
		Br(PBBs&PBDEs)	BL	/	
		Phthalate(DBP\BBP \DEHP\DIBP)	--	N.D.	
117	Solder	Pb	BL	/	Pass
		Cd	BL	/	
		Hg	BL	/	
		Cr(Cr(VI))	BL	/	
		Br(PBBs&PBDEs)	--	--	
		Phthalate(DBP\BBP \DEHP\DIBP)	--	--	
118	Black IC	Pb	BL	/	Pass
		Cd	BL	/	
		Hg	BL	/	
		Cr(Cr(VI))	BL	/	
		Br(PBBs&PBDEs)	BL	/	
		Phthalate(DBP\BBP \DEHP\DIBP)	--	N.D.	
119	Black metal screw	Pb	BL	/	Pass
		Cd	BL	/	
		Hg	BL	/	
		Cr(Cr(VI))	X	N.D.	
		Br(PBBs&PBDEs)	--	--	
		Phthalate(DBP\BBP \DEHP\DIBP)	--	--	

TEST REPORT

Report No.:MTi230109002-12C1

Page 27 of 52

Part No.	Sample Description	Test item	XRF Result	Chemical Test (mg/kg)	Conclusion
120	Black metal screw	Pb	BL	/	Pass
		Cd	BL	/	
		Hg	BL	/	
		Cr(Cr(VI))	X	N.D.	
		Br(PBBs&PBDEs)	--	--	
		Phthalate(DBP\BBP \DEHP\DIBP)	--	--	
121	Black metal screw	Pb	BL	/	Pass
		Cd	BL	/	
		Hg	BL	/	
		Cr(Cr(VI))	X	N.D.	
		Br(PBBs&PBDEs)	--	--	
		Phthalate(DBP\BBP \DEHP\DIBP)	--	--	
122	Silvery metal	Pb	BL	/	Pass
		Cd	BL	/	
		Hg	BL	/	
		Cr(Cr(VI))	X	N.D.	
		Br(PBBs&PBDEs)	--	--	
		Phthalate(DBP\BBP \DEHP\DIBP)	--	--	
123	Black metal screw	Pb	BL	/	Pass
		Cd	BL	/	
		Hg	BL	/	
		Cr(Cr(VI))	X	N.D.	
		Br(PBBs&PBDEs)	--	--	
		Phthalate(DBP\BBP \DEHP\DIBP)	--	--	
124	Black metal screw	Pb	BL	/	Pass
		Cd	BL	/	
		Hg	BL	/	
		Cr(Cr(VI))	X	N.D.	
		Br(PBBs&PBDEs)	--	--	
		Phthalate(DBP\BBP \DEHP\DIBP)	--	--	

TEST REPORT

Report No.:MTi230109002-12C1

Page 28 of 52

Part No.	Sample Description	Test item	XRF Result	Chemical Test (mg/kg)	Conclusion
125	Black metal screw	Pb	BL	/	Pass
		Cd	BL	/	
		Hg	BL	/	
		Cr(Cr(VI))	BL	/	
		Br(PBBs&PBDEs)	--	--	
		Phthalate(DBP\BBP \DEHP\DIBP)	--	--	
126	Black metal screw	Pb	BL	/	Pass
		Cd	BL	/	
		Hg	BL	/	
		Cr(Cr(VI))	X	N.D.	
		Br(PBBs&PBDEs)	--	--	
		Phthalate(DBP\BBP \DEHP\DIBP)	--	--	
127	Black metal screw	Pb	BL	/	Pass
		Cd	BL	/	
		Hg	BL	/	
		Cr(Cr(VI))	BL	/	
		Br(PBBs&PBDEs)	--	--	
		Phthalate(DBP\BBP \DEHP\DIBP)	--	--	
128	Black metal screw	Pb	BL	/	Pass
		Cd	BL	/	
		Hg	BL	/	
		Cr(Cr(VI))	X	N.D.	
		Br(PBBs&PBDEs)	--	--	
		Phthalate(DBP\BBP \DEHP\DIBP)	--	--	
129	Silvery metal screw	Pb	BL	/	Pass
		Cd	BL	/	
		Hg	BL	/	
		Cr(Cr(VI))	BL	/	
		Br(PBBs&PBDEs)	--	--	
		Phthalate(DBP\BBP \DEHP\DIBP)	--	--	

TEST REPORT

Report No.:MTi230109002-12C1

Page 29 of 52

Part No.	Sample Description	Test item	XRF Result	Chemical Test (mg/kg)	Conclusion
130	Silvery metal screw	Pb	BL	/	Pass
		Cd	BL	/	
		Hg	BL	/	
		Cr(Cr(VI))	BL	/	
		Br(PBBs&PBDEs)	--	--	
		Phthalate(DBP\BBP \DEHP\DIBP)	--	--	
131	Silvery metal screw	Pb	BL	/	Pass
		Cd	BL	/	
		Hg	BL	/	
		Cr(Cr(VI))	BL	/	
		Br(PBBs&PBDEs)	--	--	
		Phthalate(DBP\BBP \DEHP\DIBP)	--	--	
132	Black plastic	Pb	BL	/	Pass
		Cd	BL	/	
		Hg	BL	/	
		Cr(Cr(VI))	BL	/	
		Br(PBBs&PBDEs)	BL	/	
		Phthalate(DBP\BBP \DEHP\DIBP)	--	N.D.	
133	White plastic	Pb	BL	/	Pass
		Cd	BL	/	
		Hg	BL	/	
		Cr(Cr(VI))	BL	/	
		Br(PBBs&PBDEs)	X	N.D.	
		Phthalate(DBP\BBP \DEHP\DIBP)	--	N.D.	
134	Golden metal	Pb	BL	/	Pass
		Cd	BL	/	
		Hg	BL	/	
		Cr(Cr(VI))	BL	/	
		Br(PBBs&PBDEs)	--	--	
		Phthalate(DBP\BBP \DEHP\DIBP)	--	--	

TEST REPORT

Report No.:MTi230109002-12C1

Page 30 of 52

Part No.	Sample Description	Test item	XRF Result	Chemical Test (mg/kg)	Conclusion
135	Black line skin	Pb	BL	/	Pass
		Cd	BL	/	
		Hg	BL	/	
		Cr(Cr(VI))	BL	/	
		Br(PBBs&PBDEs)	BL	/	
		Phthalate(DBP\BBP \DEHP\DIBP)	--	N.D.	
136	Blue line skin	Pb	BL	/	Pass
		Cd	BL	/	
		Hg	BL	/	
		Cr(Cr(VI))	BL	/	
		Br(PBBs&PBDEs)	BL	/	
		Phthalate(DBP\BBP \DEHP\DIBP)	--	N.D.	
137	Brown line skin	Pb	BL	/	Pass
		Cd	BL	/	
		Hg	BL	/	
		Cr(Cr(VI))	BL	/	
		Br(PBBs&PBDEs)	BL	/	
		Phthalate(DBP\BBP \DEHP\DIBP)	--	N.D.	
138	Yellow line skin	Pb	BL	/	Pass
		Cd	BL	/	
		Hg	BL	/	
		Cr(Cr(VI))	BL	/	
		Br(PBBs&PBDEs)	BL	/	
		Phthalate(DBP\BBP \DEHP\DIBP)	--	N.D.	
139	Copper metal line	Pb	BL	/	Pass
		Cd	BL	/	
		Hg	BL	/	
		Cr(Cr(VI))	BL	/	
		Br(PBBs&PBDEs)	--	--	
		Phthalate(DBP\BBP \DEHP\DIBP)	--	--	

TEST REPORT

Report No.:MTi230109002-12C1

Page 31 of 52

Part No.	Sample Description	Test item	XRF Result	Chemical Test (mg/kg)	Conclusion
140	Black plastic	Pb	BL	/	Pass
		Cd	BL	/	
		Hg	BL	/	
		Cr(Cr(VI))	BL	/	
		Br(PBBs&PBDEs)	BL	/	
		Phthalate(DBP\BBP \DEHP\DIBP)	--	N.D.	
141	Black plastic	Pb	BL	/	Pass
		Cd	BL	/	
		Hg	BL	/	
		Cr(Cr(VI))	BL	/	
		Br(PBBs&PBDEs)	BL	/	
		Phthalate(DBP\BBP \DEHP\DIBP)	--	N.D.	
142	Silvery metal	Pb	BL	/	Pass
		Cd	BL	/	
		Hg	BL	/	
		Cr(Cr(VI))	BL	/	
		Br(PBBs&PBDEs)	--	--	
		Phthalate(DBP\BBP \DEHP\DIBP)	--	--	
143	Silvery metal	Pb	BL	/	Pass
		Cd	BL	/	
		Hg	BL	/	
		Cr(Cr(VI))	BL	/	
		Br(PBBs&PBDEs)	--	--	
		Phthalate(DBP\BBP \DEHP\DIBP)	--	--	
144	Yellow line skin	Pb	BL	/	Pass
		Cd	BL	/	
		Hg	BL	/	
		Cr(Cr(VI))	BL	/	
		Br(PBBs&PBDEs)	BL	/	
		Phthalate(DBP\BBP \DEHP\DIBP)	--	N.D.	

TEST REPORT

Report No.:MTi230109002-12C1

Page 32 of 52

Part No.	Sample Description	Test item	XRF Result	Chemical Test (mg/kg)	Conclusion
145	Purple line skin	Pb	BL	/	Pass
		Cd	BL	/	
		Hg	BL	/	
		Cr(Cr(VI))	BL	/	
		Br(PBBs&PBDEs)	BL	/	
		Phthalate(DBP\BBP \DEHP\DIBP)	--	N.D.	
146	Red line skin	Pb	BL	/	Pass
		Cd	BL	/	
		Hg	BL	/	
		Cr(Cr(VI))	BL	/	
		Br(PBBs&PBDEs)	BL	/	
		Phthalate(DBP\BBP \DEHP\DIBP)	--	N.D.	
147	Black line skin	Pb	BL	/	Pass
		Cd	BL	/	
		Hg	BL	/	
		Cr(Cr(VI))	BL	/	
		Br(PBBs&PBDEs)	BL	/	
		Phthalate(DBP\BBP \DEHP\DIBP)	--	N.D.	
148	Blue line skin	Pb	BL	/	Pass
		Cd	BL	/	
		Hg	BL	/	
		Cr(Cr(VI))	BL	/	
		Br(PBBs&PBDEs)	BL	/	
		Phthalate(DBP\BBP \DEHP\DIBP)	--	N.D.	
149	White line skin	Pb	BL	/	Pass
		Cd	BL	/	
		Hg	BL	/	
		Cr(Cr(VI))	BL	/	
		Br(PBBs&PBDEs)	BL	/	
		Phthalate(DBP\BBP \DEHP\DIBP)	--	N.D.	

TEST REPORT

Report No.:MTi230109002-12C1

Page 33 of 52

Part No.	Sample Description	Test item	XRF Result	Chemical Test (mg/kg)	Conclusion
150	Silvery metal line	Pb	BL	/	Pass
		Cd	BL	/	
		Hg	BL	/	
		Cr(Cr(VI))	BL	/	
		Br(PBBs&PBDEs)	--	--	
		Phthalate(DBP\BBP \DEHP\DIBP)	--	--	
Remark: All test results are referenced to report:MTi220803012-08C1.					

Remark:

- (1) (a) It is the result on total Br while test item on restricted substances is PBBs/PBDEs. It is the result on total Cr while test item on restricted substances is Cr⁶⁺.
- (b) Results are obtained by XRF for primary screening, and further chemical testing by ICP-OES (for Cd, Pb, Hg), UV-Vis (for Cr(VI)) and GC-MS (for PBBs, PBDEs) is recommended to be performed, if the concentration exceeds the below warning value according to IEC62321-3-1:2013 (unit: mg/kg).

Element	Polymers	Metals	Composite Material
Cd	$BL \leq (70-3\sigma) < X < (130+3\sigma) \leq OL$	$BL \leq (70-3\sigma) < X < (130+3\sigma) \leq OL$	$LOD < X < (150+3\sigma) \leq OL$
Pb	$BL \leq (700-3\sigma) < X < (1300+3\sigma) \leq OL$	$BL \leq (700-3\sigma) < X < (1300+3\sigma) \leq OL$	$BL \leq (500-3\sigma) < X < (1500+3\sigma) \leq OL$
Hg	$BL \leq (700-3\sigma) < X < (1300+3\sigma) \leq OL$	$BL \leq (700-3\sigma) < X < (1300+3\sigma) \leq OL$	$BL \leq (500-3\sigma) < X < (1500+3\sigma) \leq OL$
Cr	$BL \leq (700-3\sigma) < X$	$BL \leq (700-3\sigma) < X$	$BL \leq (500-3\sigma) < X$
Br	$BL \leq (300-3\sigma) < X$	NA	$BL \leq (250-3\sigma) < X$

(c) OL=Over Limit, BL=Below Limit, X=inconclusive, LOD=Limit of Detection, NA=not applicable, -- = No Testing

(d) The XRF screening test for RoHS elements-The reading may be different to the actual content in the sample be of non-uniformity composition

TEST REPORT

Report No.:MTi230109002-12C1

Page 34 of 52

- (2) (a) mg/kg=ppm=0.0001%, N.D.=not detected (<MDL)
 (b) Unit and Method Detection Limit(MDL) in wet chemical test

Test Items	Unit	MDL	Limit
Pb	mg/kg	2	1000
Cd	mg/kg	2	100
Hg	mg/kg	2	1000
Cr ⁶⁺	mg/kg	See below	1000
PBBs	mg/kg	See below	1000
PBDEs	mg/kg	See below	1000
DBP	mg/kg	50	1000
BBP	mg/kg	50	1000
DEHP	mg/kg	50	1000
DIBP	mg/kg	50	1000

The MDL for single compound of PBBs & PBDEs is 20mg/kg, MDL of Cr⁶⁺ for metal sample is 0.10µg/cm². and MDL of Cr⁶⁺ for polymer & composite sample is 8 mg/kg.

(c) Metal sample:

-The sample is positive for Cr⁶⁺ if the Cr⁶⁺ concentration is greater than 0.13 µg/cm².

The sample coating is considered to contain Cr⁶⁺.

-The sample is negative for Cr⁶⁺ if Cr⁶⁺ is ND (concentration less than 0.10 µg/cm²).

The coating is considered a non- Cr⁶⁺ based coating

-The result between 0.10 µg/cm² and 0.13 µg/cm² is considered to be inconclusive, unavoidable coating variations may influence the determination

Information on storage conditions and production date of the tested sample is unavailable and thus Cr⁶⁺ results represent status of the sample at the time of testing.

(3) As specified by client to test the specified materials only.

(4) *=According to the declaration from the client, Lead (Pb) in the sample are exempted by EU RoHS Directive 2011/65/EU based on ANNEX III 6(c): Copper alloy containing no more than 4% lead by weigh

(5) #=According to the declaration from the client, Lead (Pb) in the sample are exempted by EU RoHS Directive 2011/65/EU based on ANNEX III 7(c)-I, Electrical and electronic components containing lead in a glass or ceramic other than dielectric ceramic in capacitors.

2. With reference to EU Battery Directive (2006/66/EC & 2013/56/EU) to test Lead(Pb), Cadmium(Cd), Mercury(Hg) content.

Test Method: Refer to IEC 62321-5:2013 and IEC 62321-4:2017, analyzed by ICP-OES.

Part No.	Item	Unit	MDL	Results	Required Limit
----------	------	------	-----	---------	----------------

151	Lead (Pb)	%	0.001	N.D.	0.004*
	Cadmium (Cd)	%	0.001	N.D.	0.002
	Mercury (Hg)	%	0.0005	N.D.	0.0005

Note:

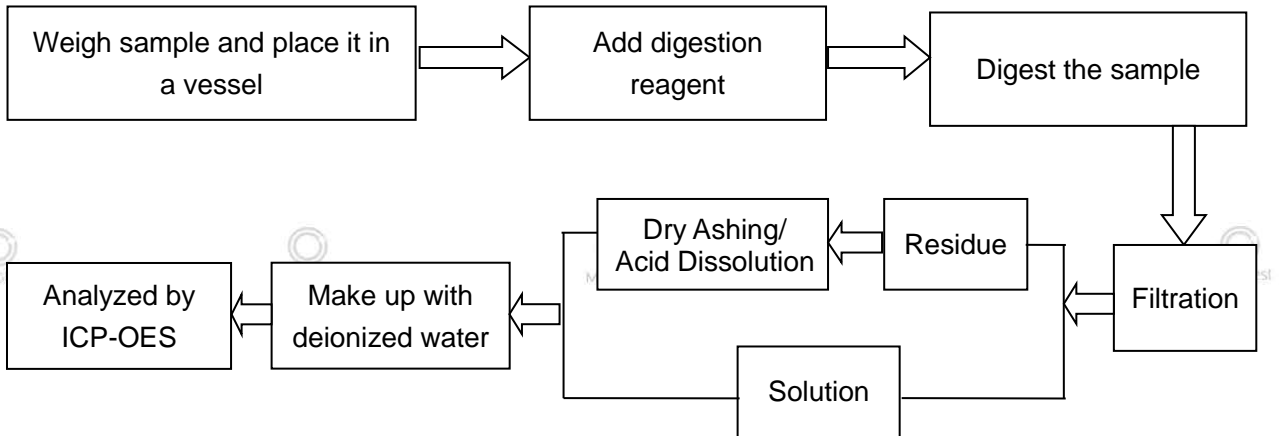
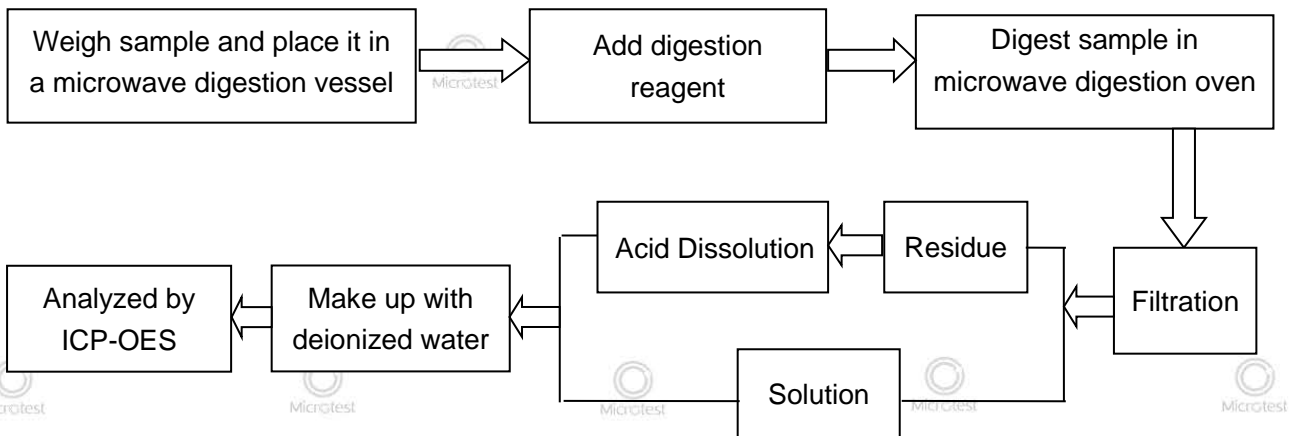
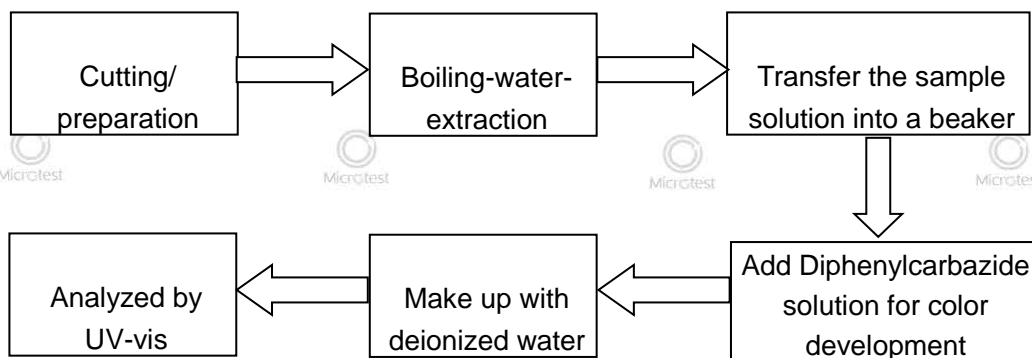
- N.D. = Not Detected or less than MDL
- MDL = Method Detection Limit
- 1mg/kg=1ppm=0.0001%
- *: According to 2006/66/EC battery directive if the lead content is more than 40 ppm (40mg/kg), the sample must be marked "Pb".

Remark:

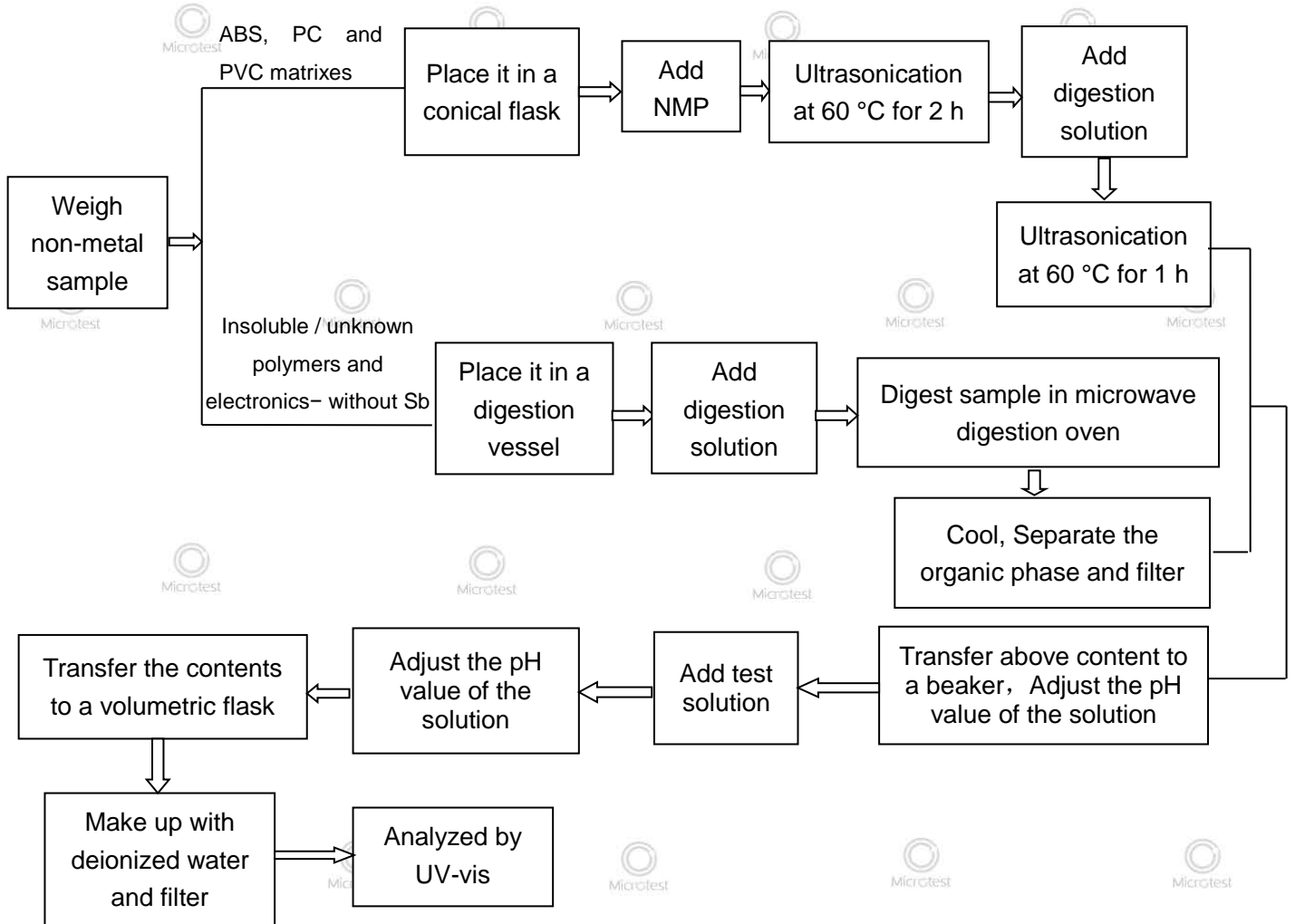
The requirement is following article 4 and 21 of Directive 2006/66/EC and 2013/56/EU.

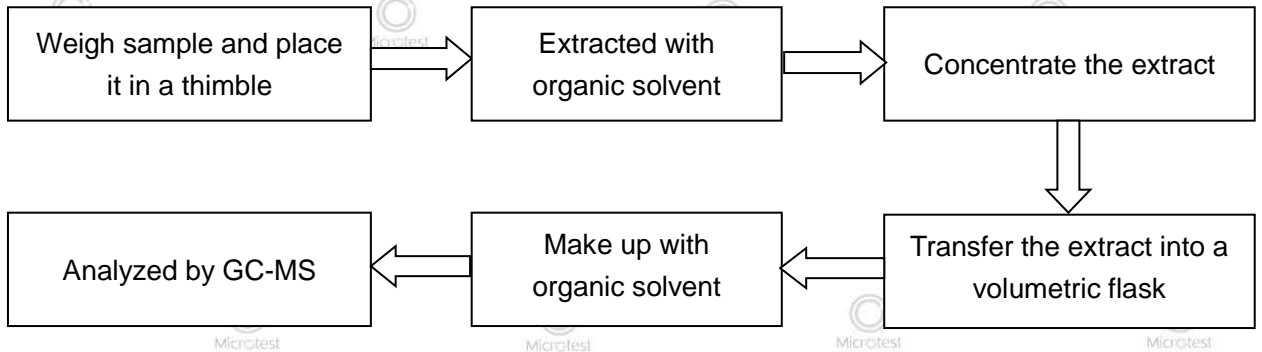
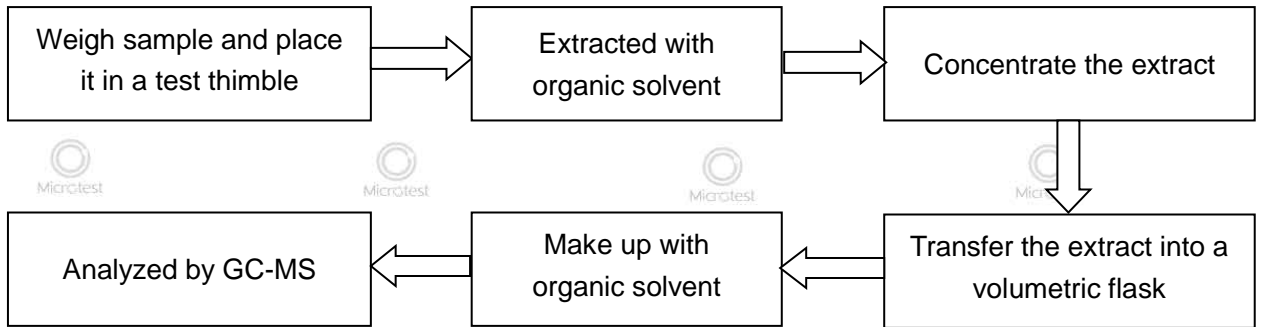
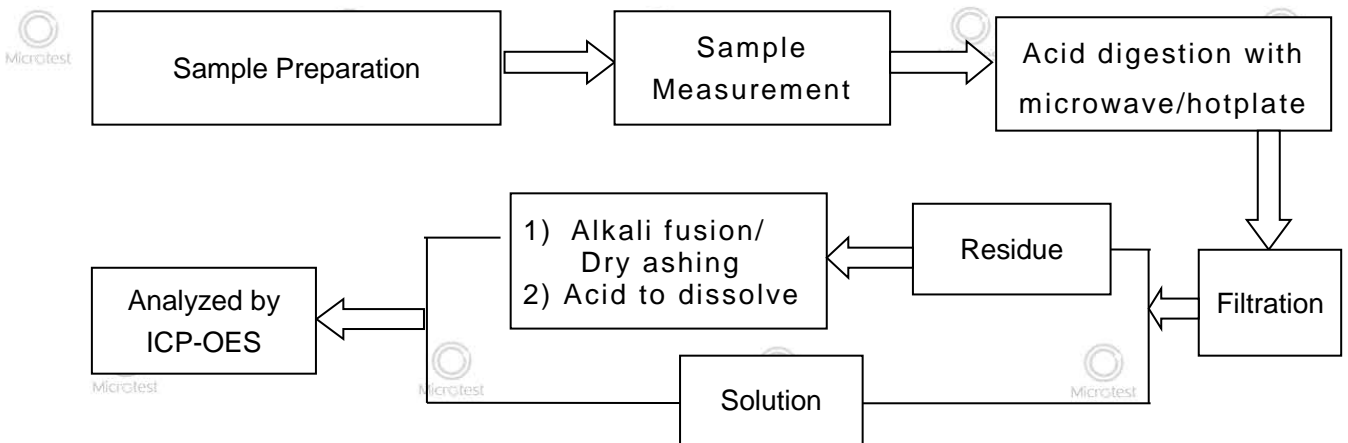
- According to Directive 2013/56/EU, after 1 October, 2015, button cells shall not contain more than 0.0005% by weight of Mercury.
- According to Directive 2006/66/EC, all batteries, accumulators and battery packs must be appropriately marked with the symbol indicating "separate collection" shown below.



Testing flow chart:
1. Lead, Cadmium

2. Mercury

3. Hexavalent Chromium (For metal material)


4. Hexavalent Chromium(For non-metal material):



5. Polybromobiphenyls (PBBs), Polybromodiphenyl ethers (PBDEs)

6. Phthalates(DBP, BBP, DEHP, DIBP)

7. Lead(Pb), Cadmium(Cd), Mercury(Hg) - EU Battery Directive (2006/66/EC & 2013/56/EU)


Pictures





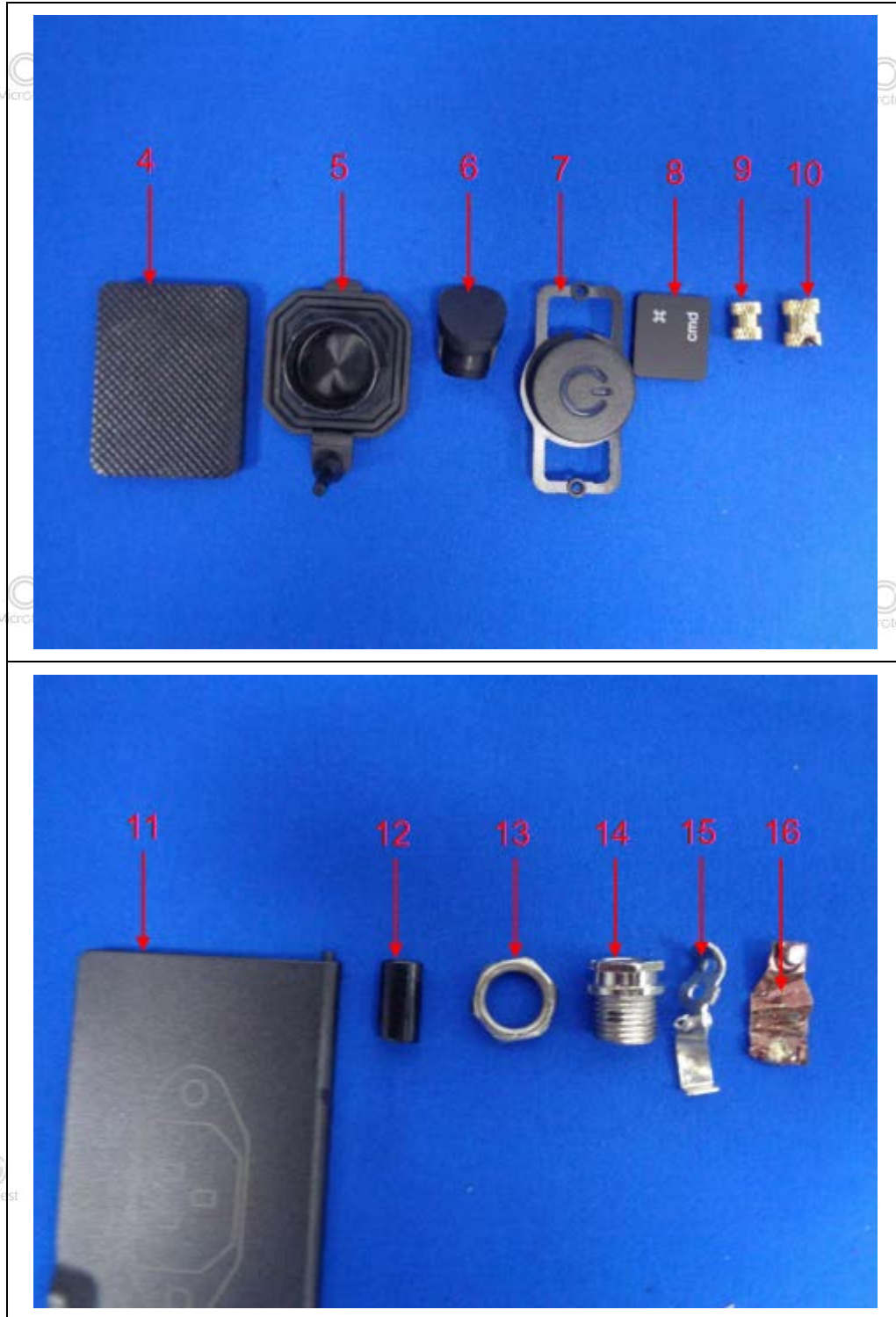
TEST REPORT



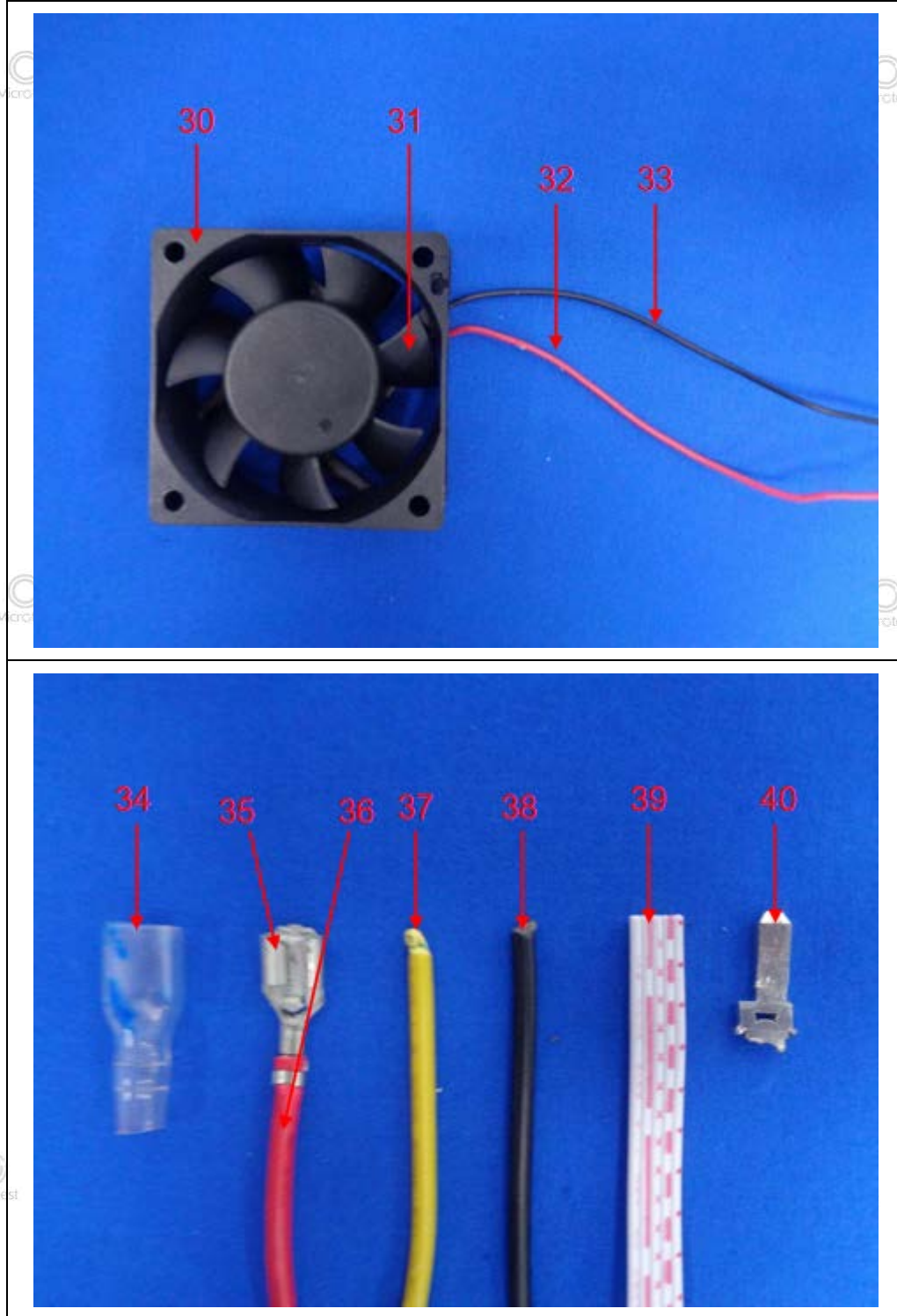
Report No.:MTi230109002-12C1

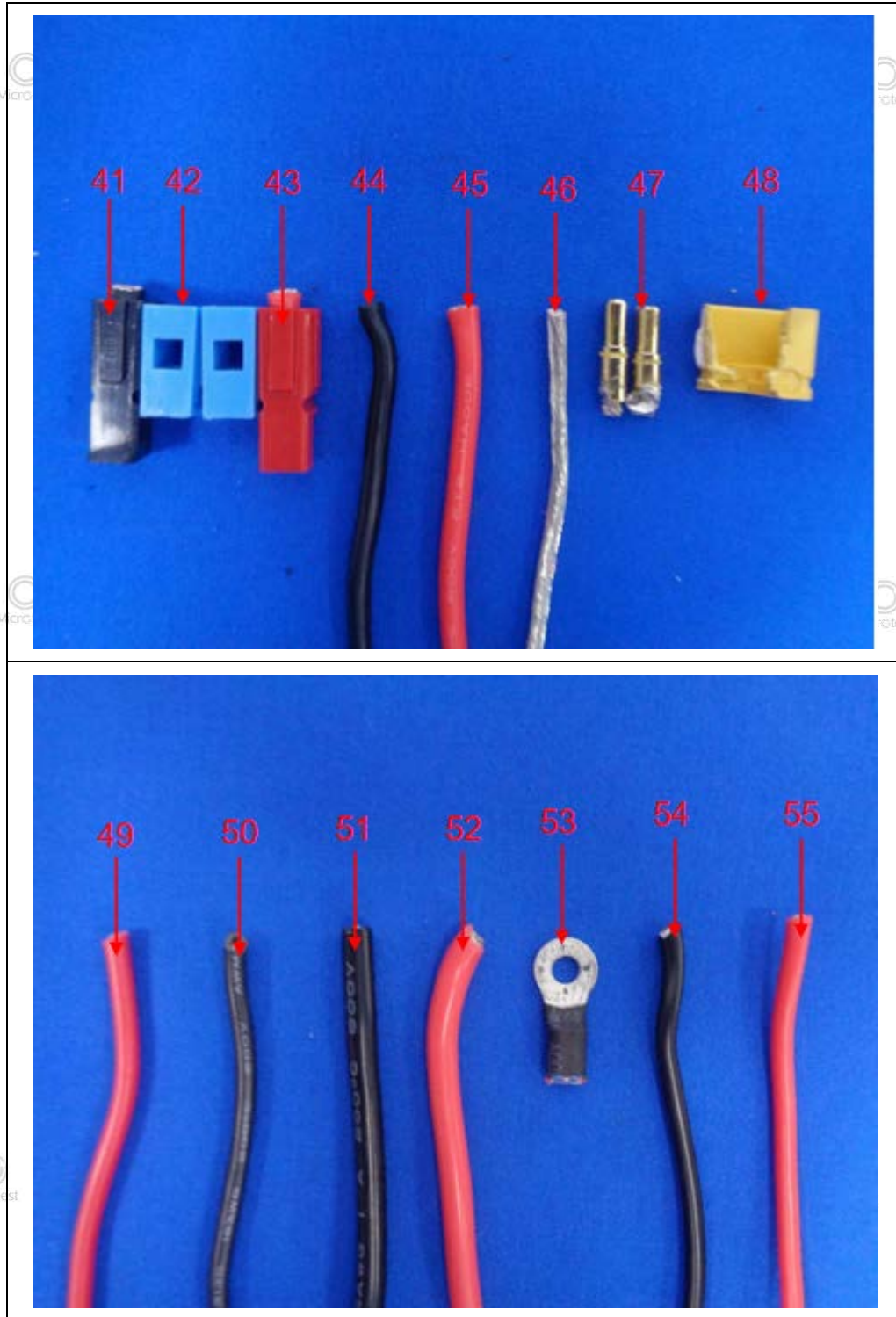
Page 40 of 52

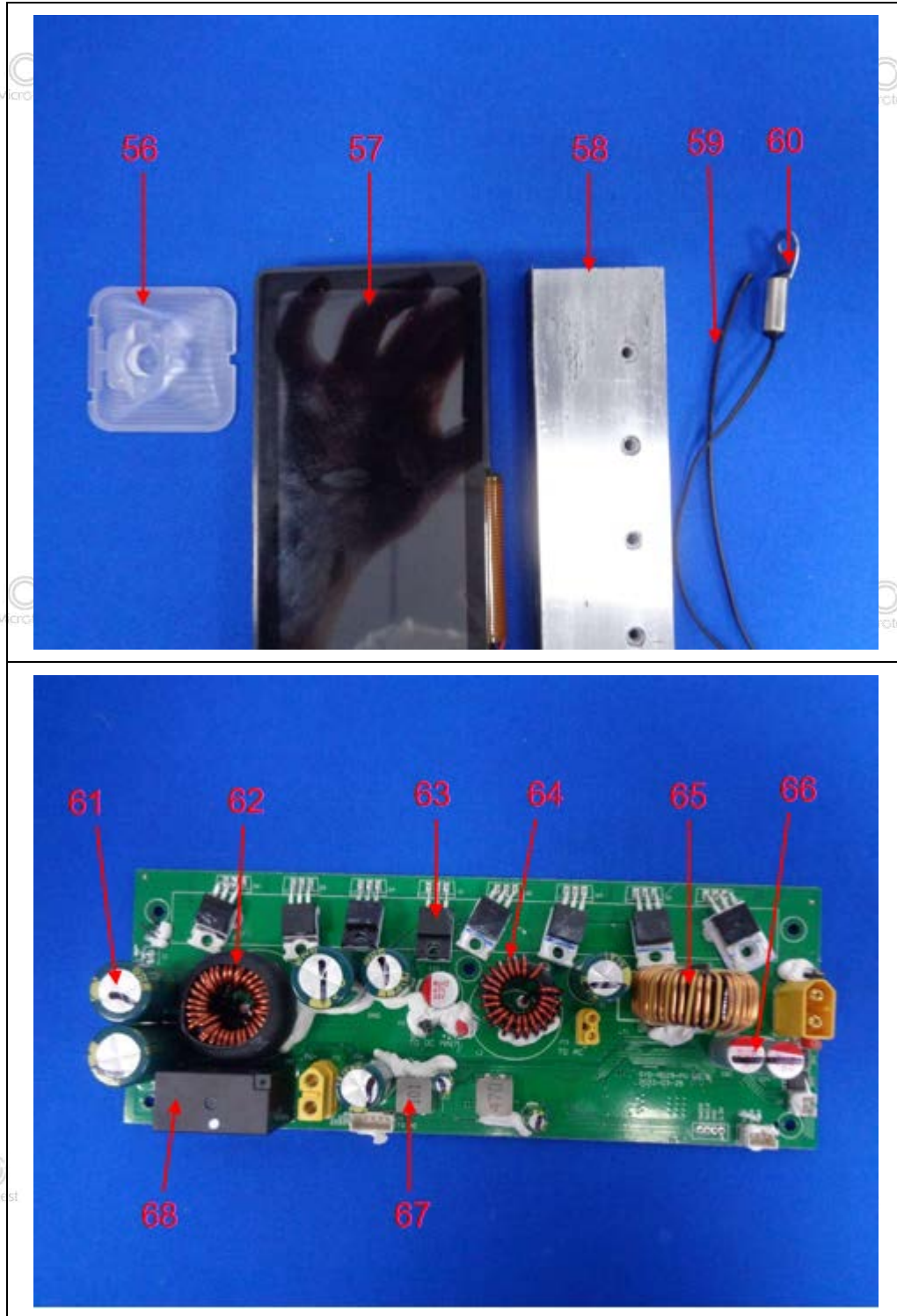


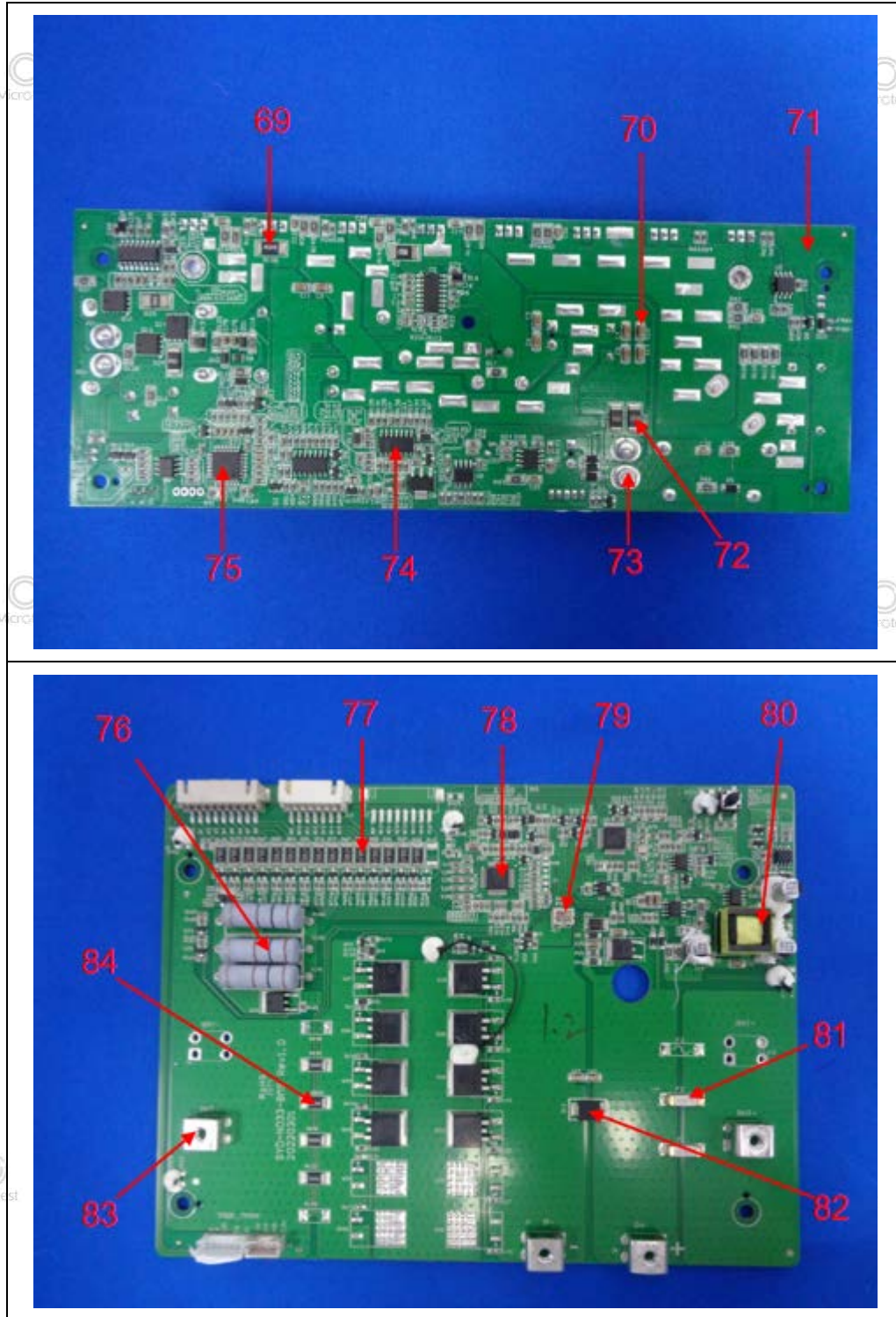


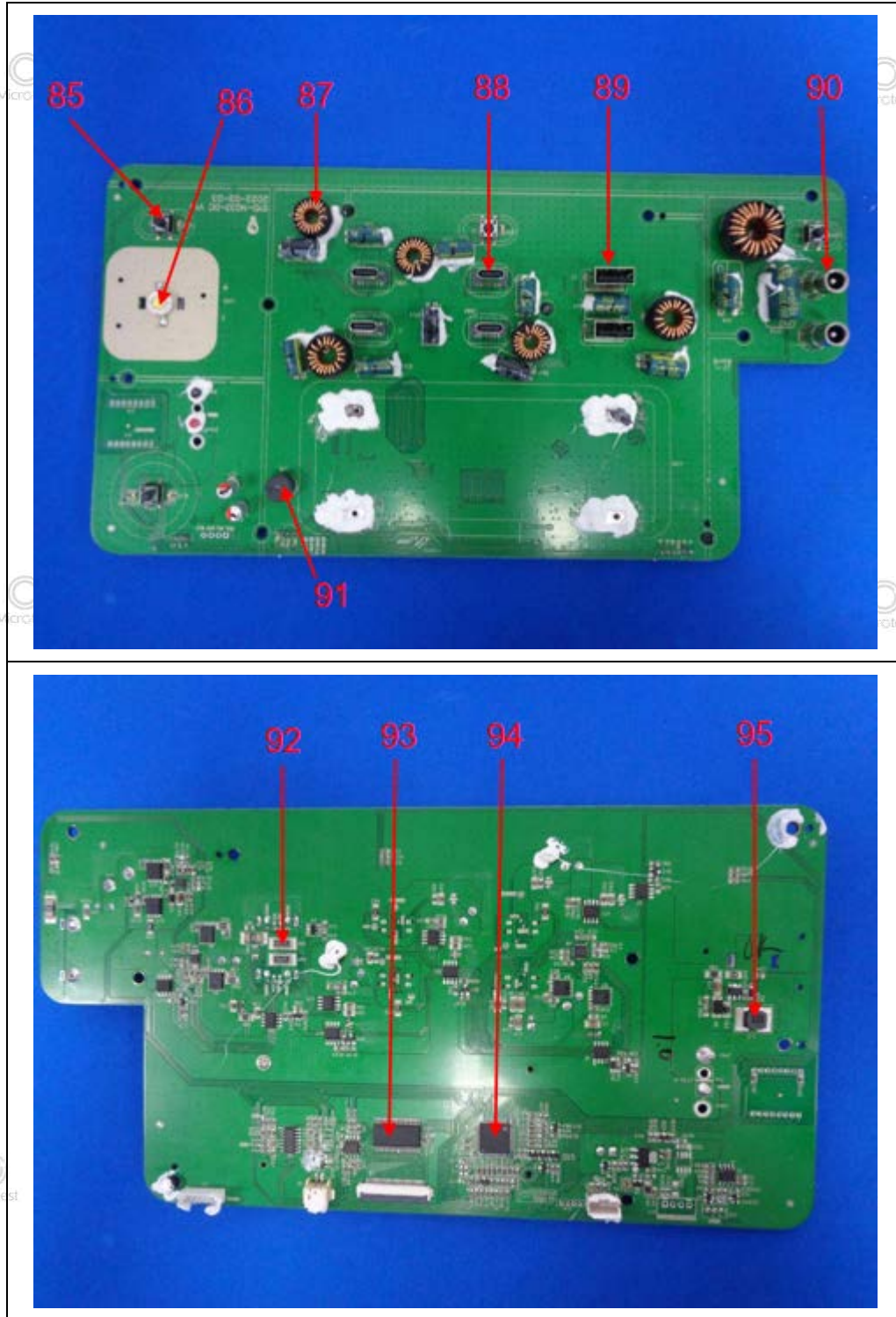


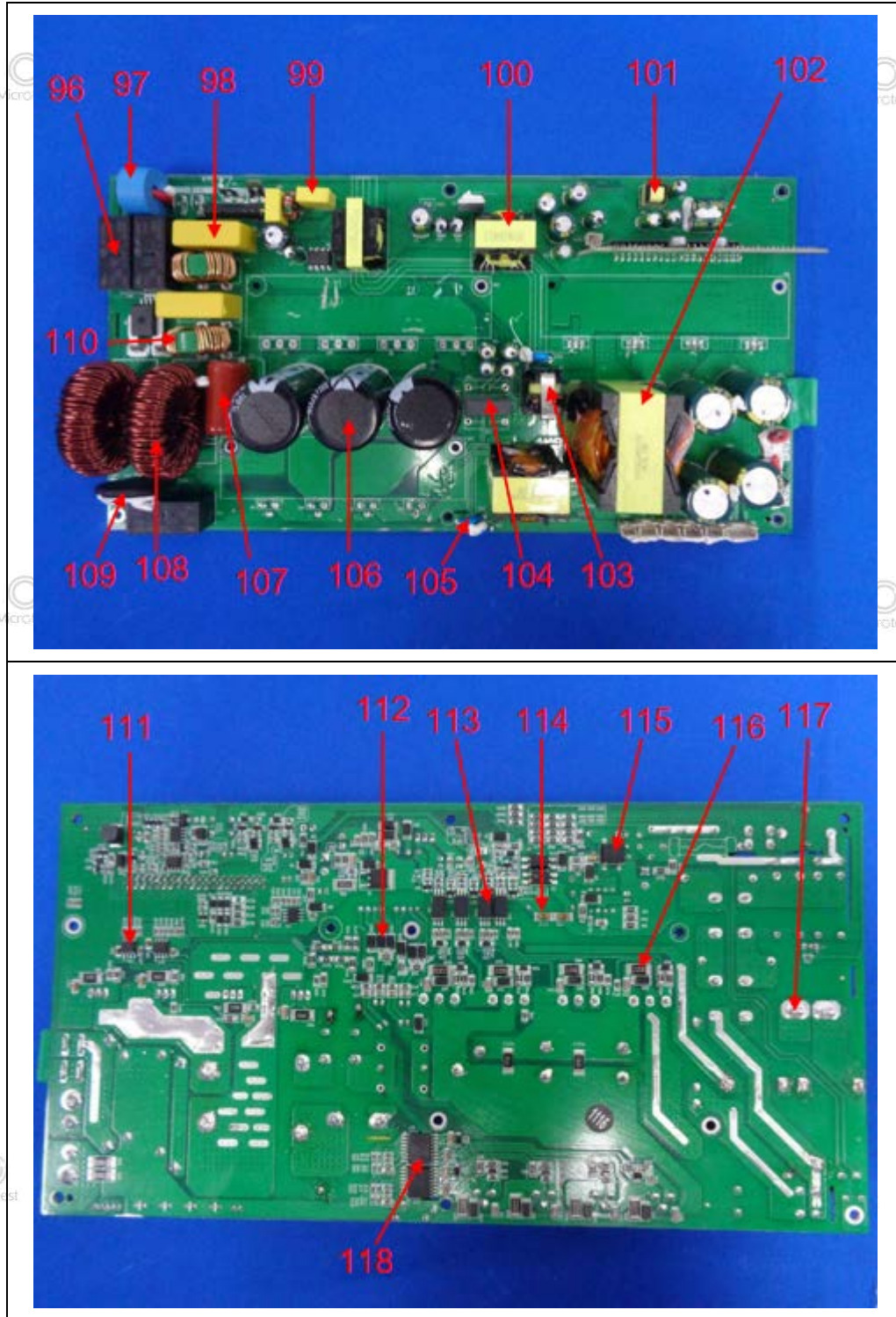




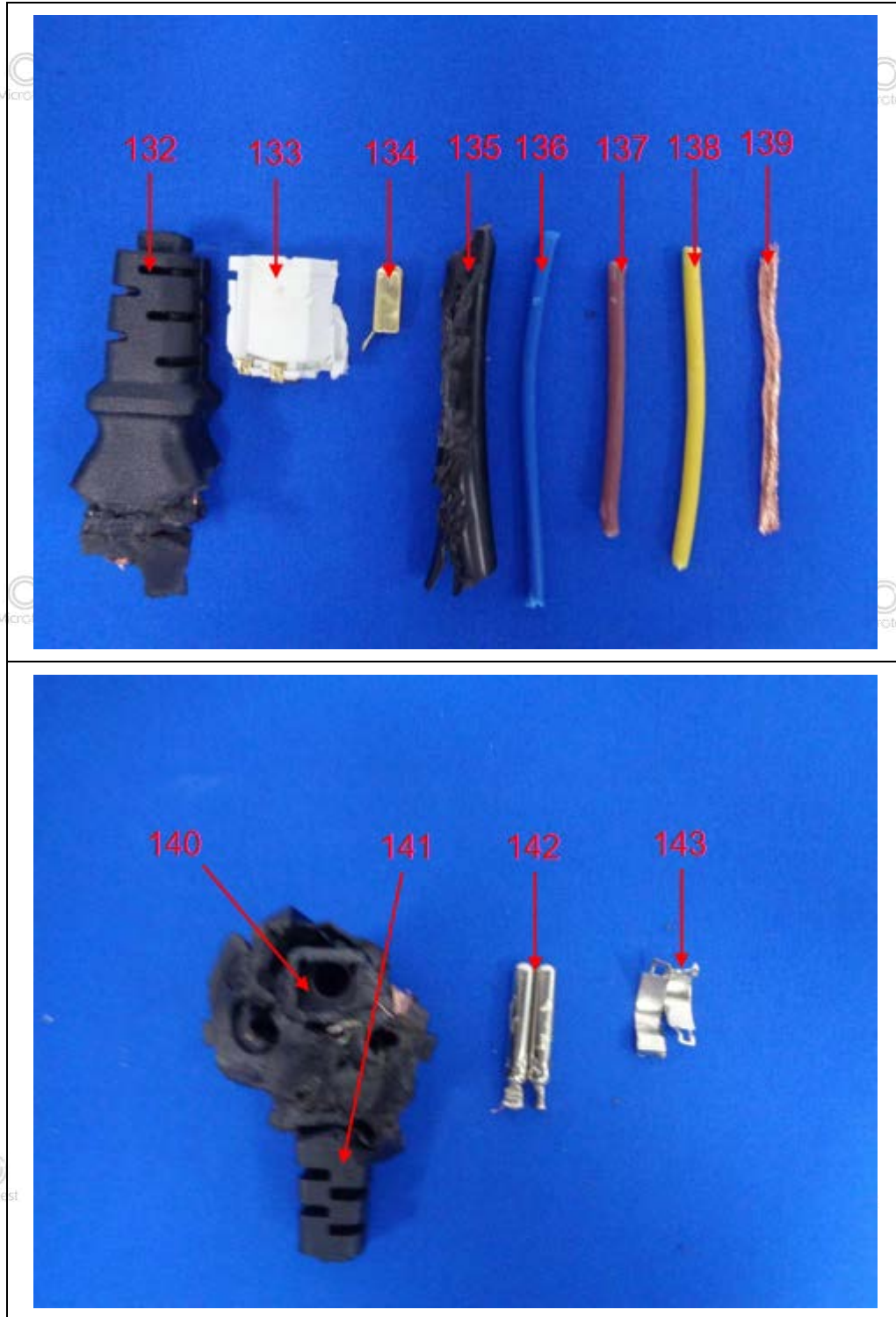


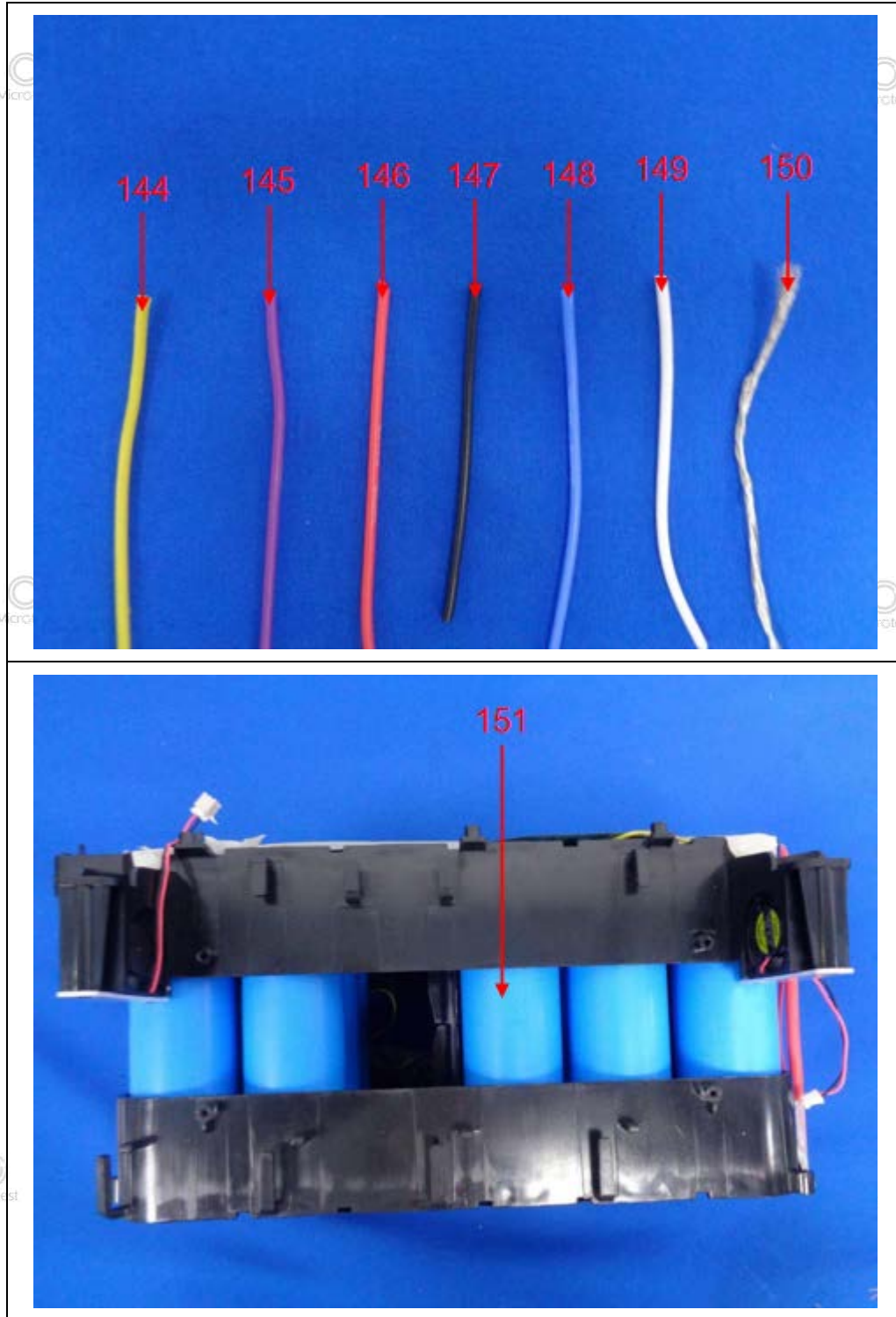












***** END *****